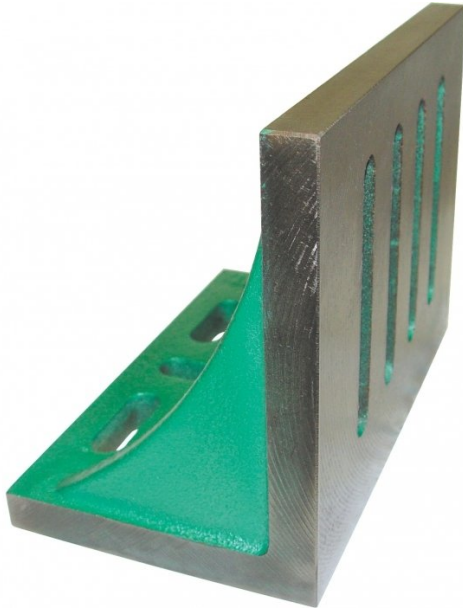


Product Brochure For ZM246

Angle Plate - Machined

250 x 150 x 200mm

Webbed End



ORDER CODE:	ZM246
Type:	Webbed End
Finish:	Machined
Length (mm):	250
Width (mm):	150
Height (mm):	200
Nett Weight (kg):	12.0



Description

Manufactured in Taiwan

Manufactured from high quality close grain cast iron casting. Accurately machined, square and parallel to the outside face

Features

- Flat and square accuracy
- Ideal for machining, layout and inspection
- Slots for convenient clamping
- Machined finish