

Product Brochure For W08085

BuildPro Right Angle Bracket / Stop - T60305

91 x 91 x 30mm

Suits Ø16mm Welding Tables Holes

ORDER CODE:	W08085
MODEL:	T60305
Type:	Right Angle Bracket / Stop
Suits Table Hole Diameter (Ø (mm)):	Ø16mm
Size (mm):	91 x 91 x 30mm
Slot Length (mm):	51
Nett Weight (kg):	0.3



BuildPro™



Description

These precision machined angle brackets hold materials at 90°. The holes and slots combination allow for infinite adjustments in fixturing.

For heavy duty applications, please see Riser Blocks.

Insert V-Block to Right Angle Bracket holes to hold round stock in the vertical position.

The very practical, modular design of the BuildPro® Table makes it easy to set-up and tear down for job at hand, big or small. Save time and money by holding, positioning and locating quickly and easily with a wide variety of BuildPro® clamps and accessories.

All BuildPro® Tables have 16mm thick steel plate with 16mm holes in a 50mm grid pattern. All tables, except BuildPro® MAX, have 40mm slots between plates.

Features

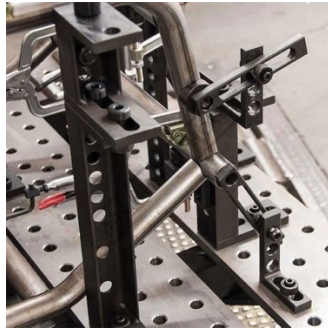
- All plates are 12mm thick

Product Brochure For W08085

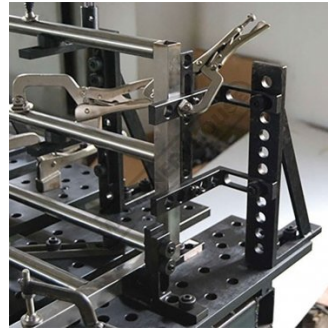
Specific Features



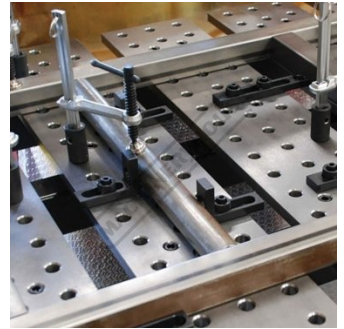
Precision Machined Right Angle Brackets Hold Stock at 90 Degrees



Right Angle Brackets can be Used in Combination with Straight Edge Stops



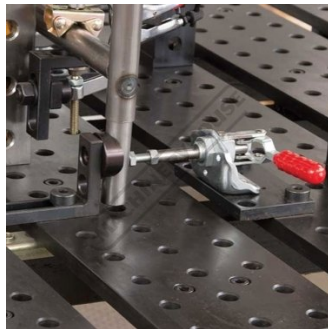
The Holes and Slots in the Right Angle Brackets Allow for Infinite Options in Fixturing



50mm Right Angle Brackets are Ideal for Use as Low Profile Locating Elements



Using the Large 300mm Right Angle Brackets for Fixturing Elements at 90 Degrees



Insert V Blocks to Support Round Stock

Recommended Accessories

W08012

BuildPro V-Block Spacer

W08042

BuildPro Ball Lock Bolt - Fixed Length

