

Product Brochure For W07706

Welding Table with Square & Round Tube Clamp Kit - SRK-40P1

Includes 40 Piece Clamp Kit
600 x 900 x 860mm (LxWxH)

ORDER CODE:	W07706
MODEL:	SRK-40P1
Type:	1D
Table Hole Diameter (Ø):	16mm
Table Top Size (mm):	600 x 900
Table Height with Stand (mm):	158 / 860
Table Side Height (mm):	~
Top Plate Thickness (mm):	4
Grid Pattern (mm):	50 x 50
Table Slots (mm):	~
Table Load Capacity (kg):	~
Nett Weight (kg):	39



Description

Complete modular clamp kit for the set-up of 4 x SQUARE or ROUND tubing frames

FixturePoint Welding Table
ONE Table, TWO Height Settings

An Affordable, Easy-to-Use Modular Fixturing System.

Increase work quality and productivity!

Fixture at ANY POINT on the tabletop.

The FixturePoint System is ideal for the set-up of 2D frames. Use the clamp kit to get started right away, working comfortably, safely, and efficiently for improved work quality and productivity!

Clamps and Components can be inserted into the 16mm holes on the 900 x 600mm tabletop for complete flexibility.

Features

- 40 Piece Clamp kit for the set-up of 4 x SQUARE & ROUND tubing frames
- Ø16mm holes
- 4mm thick plate
- 50 x 50mm grid pattern
- 600 x 900mm tabletop
- One Table, Two Height Settings - Tabletop 158mm Height, Leg Frame (incl.) 860mm height

Includes

- 1 x TBH90604 Welding Table
- 4 x Weld Clamps
- 4 x Insert Stops
- 4 x Positioning Bars
- 8 x Round Material Rests
- 4 x Spacers
- 4 x Multi-Purpose Riser/Stops
- 8 x Magnetic Rests

Product Brochure For W07706

- 4 x Threaded Adaptors

Specific Features



Package Contents



SRK 40 Square and Round Clamp Kit



TBH90604 FixturePoint Welding Table



TBH90604 FixturePoint Welding Table Tabletop Setting



Adjustable Feet



Left Top View



Front View



Right View



Right Top View



Front Top View



Rear View



Rear Top View



Low View



Under View 1



Under View 2

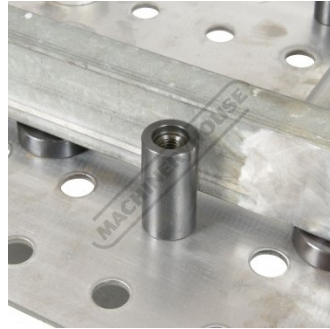


Shown Clamping Square Material

Product Brochure For W07706



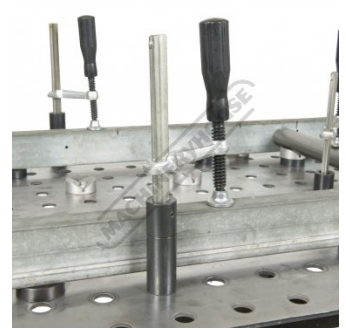
Shown Clamping Round Material



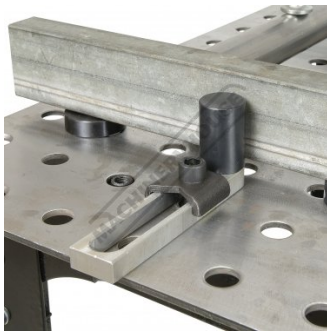
Multipurpose Riser Stop



Magnetic Rest



Clamp On Riser Stop



Positioning Bar 1



Round Material Rests



Round Material Rest with Spacer



End View 1



End View 2



End View 3

Product Brochure For W07706

Recommended Accessories

W08500

40pc Square & Round Welding
Table Clamp Kit



W08510

Weld Clamps with Locking Nuts
(2 Piece Pack)



W08511

Weld Clamps with Locking Nuts
(2 Piece Pack)



C103

228mm Multi-Purpose Locking
Clamp



W08512

Weld Clamps with Locking Nuts
(2 Piece Pack)



W08515

38mm x M12 Multi-Purpose
Riser/Stops (Spigot Type) - 4pc
Pack

