

Product Brochure For V342

Safeway Pneumatic Production Vice - PQV-160V

160mm Jaw Width
150mm Jaw Opening

On Sale - Back In Stock Soon

Ex GST	Inc GST
\$3,160.00	\$3,634.00
\$2,532.17	\$2,912.00



ORDER CODE:	V342
MODEL:	PQV-160V
D - Jaw Width (mm):	160
J - Jaw Opening (mm):	150
K - Jaw Height (mm):	58
Power (kgf):	0-2000
Air Pressure (kg/cm2):	1.5-7.0
Stroke (mm):	0-4
A (mm):	534
B (mm):	432
C (mm):	102
E (mm):	160
F (mm):	163
G (mm):	120
H (mm):	15
I (mm):	130
L (mm):	105
M (mm):	14
N (mm):	18
X (mm):	65
Y (mm):	105
Dimensions (L x W x H) (mm):	760 x 280 x 215
Nett Weight (kg):	55

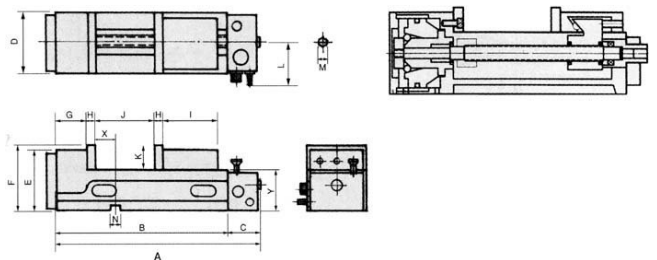


Description

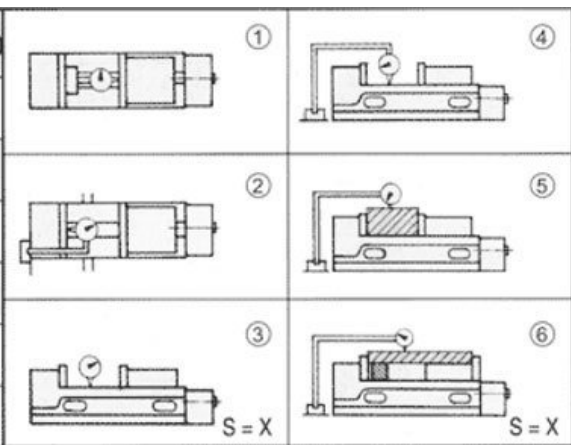
Designed for production applications with simple ON/OFF operation.

Features

- Robust construction of one piece casting consisting of fixed jaw and vise bed
- Rigid casting of high tensile ductile iron FCD60JIS (Equal to GG60) with 60kgs/mm2 or 80,000 psi tensile strength
- Suitable for mass production runs on machine centre's, milling machines, drilling machines or special purpose machines
- Compact pneumatic mechanism design. No oil is required only a air supply
- Compact total length of vice with Max. clamping capacity
- Safety locking mechanism for unexpected termination of air supply. After pneumatic clamping. The work piece will be remain clamped firmly even without the air supply
- Easy and simple ON-OFF switch control for pneumatic operation
- Safety protection with Max. pneumatic clamping stroke is 4mm to prevent inserting operator's finger during clamping operation. (Stroke is 2mm best power capacity)
- Rapid ON-OFF only 1.5sec
- Free adjusting of Max. pneumatic clamping pressure from 0-1000kgf (4000) by air regulator, jaw opening 2mm is best clamping power capacity of workpiece
- Vise bed flame hardened to HRC45° to reduce up wear and maintain accuracy
- Down trust "semi-spherical segment" mechanism eliminates the jaw and work-piece lifting



Product Brochure For V342

NO	TEST REPORT	JIS grade 1.	GUARANTEED		
1	Both jaw plate parallel	0.020 100mm	0.020 100mm	①	④
2	Keyways on bottom of vise bed square to clamping surface of jaw plate.	0.020 100mm	0.015 100mm	②	⑤
3	Vise side-lock on bottom to slide way square.	0.020 100mm	0.010 100mm	③	⑥
4	Surface of vise bed parallel to bottom of vise body.	0.020 100mm	0.010 100mm		
5	Top of rectangular test block clamped tightly by jaw parallel to bottom of vise body	0.030 100mm	0.020 100mm		
6	Max. opening test block parallel to bottom of vise body.	0.050 100mm	0.030 100mm	S = X	S = X

Recommended Accessories

V3203

Safeway Standard Hardened Jaws - 160mm

V3212

Safeway Serrated Hardened Jaws - 160mm

V3208

Safeway Vee Hardened Jaw - 160mm

