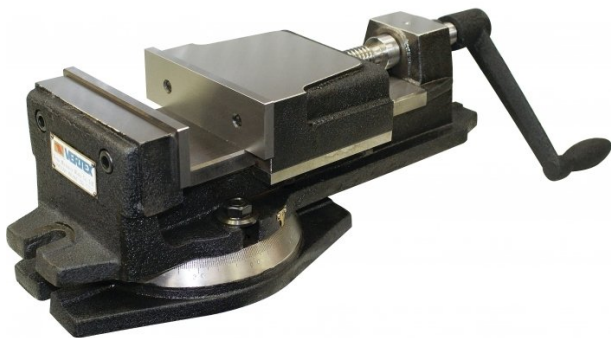


Product Brochure For V106

Vertex K-Type Milling Vice - VK-6

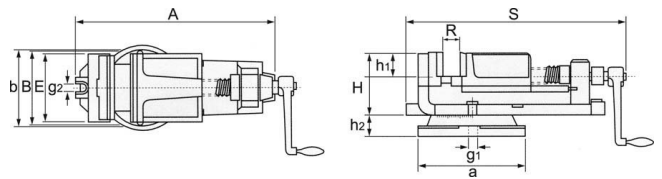
152mm Jaw Width
112mm Jaw Opening



Save now

| | |
|-----------------|-----------------|
| Ex GST | Inc GST |
| \$392.00 | \$450.80 |

| | |
|-----------------------|------|
| ORDER CODE: | V106 |
| MODEL: | VK-6 |
| E - Jaw Width (mm): | 152 |
| R - Jaw Opening (mm): | 112 |
| h1 - Jaw Depth (mm): | 40 |
| A (mm): | 421 |
| B (mm): | 160 |
| H (mm): | 105 |
| S (mm): | 462 |
| a (mm): | 245 |
| b (mm): | 175 |
| h2 (mm): | 40 |
| g1 (mm): | 16 |
| g2 (mm): | 16 |
| Nett Weight (kg): | 30 |



Features

- Jaws hardened and ground alloy steel
- All working surfaces, such as top and bottom of bed, jaw plates and base, are precision ground square and parallel
- Bearing portion of the acme-threaded leadscrew is ground for accurate alignment
- Graduated swivel base with large, easy-to-read divisions

Product Brochure For V106

Specific Features



Rear View



Shown without Handle

Recommended Accessories

V0532

Aluminium Magnetic Soft Jaws



V0539

Aluminium Magnetic Soft Jaws



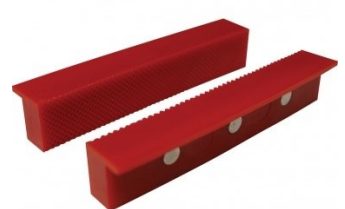
V0536

Aluminium Magnetic Soft Jaws



V0542

Plastic Magnetic Soft Jaws



V0546

Plastic Magnetic Soft Jaws

