

Product Brochure For V0928

200mm Steel Offset Fabricated Bench Vice - OSV-200

Right Hand Offset
228mm Jaw Opening

Ex GST
\$550.00

Inc GST
\$632.50



ORDER CODE:	V0928
Model:	OSV-200
Type:	Offset - Right Hand
Jaw Width (mm):	200
Jaw Height:	31.75
Jaw Opening (mm):	228
Overall Length (Closed Jaws) (mm):	606
Overall Width (mm):	354
Overall Height (mm):	236
Clamping Force (KN):	60
Nett Weight (kg):	39



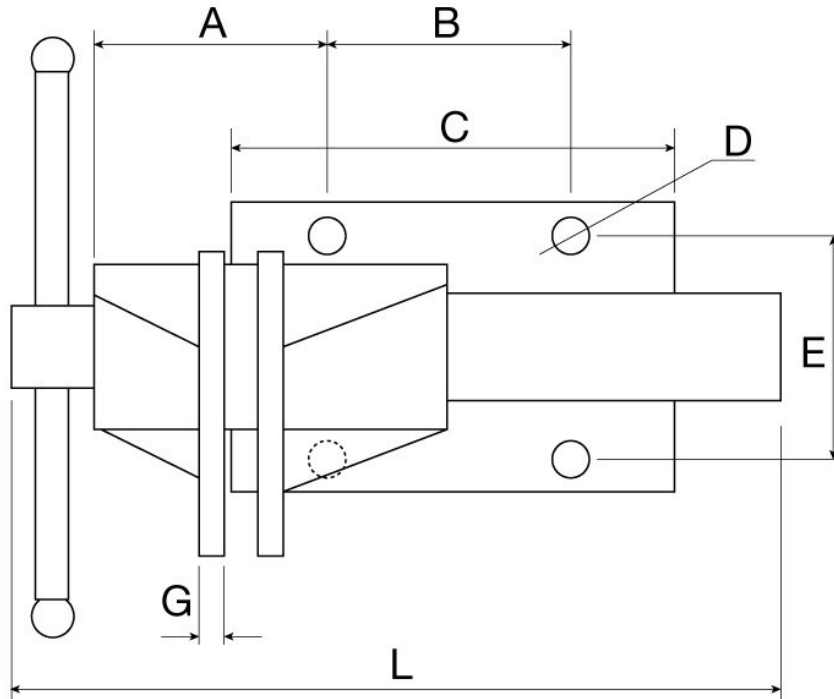
Description

Fabricated from heavy steel plate and designed for heavy duty work, includes a handy in-built anvil.

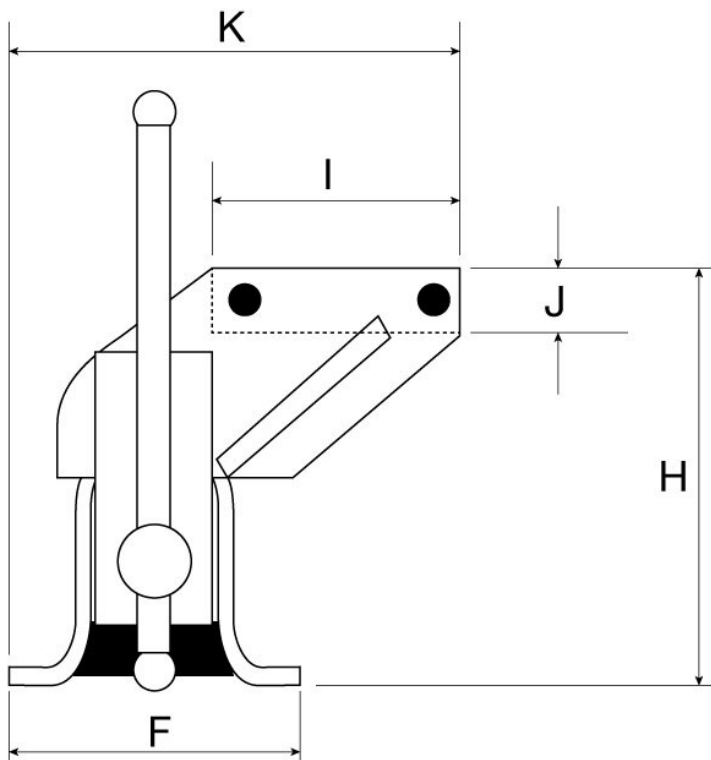
Features

- Right hand offset design
- In-built anvil
- Hardened serrated jaws
- Double start nut for higher clamping force

Product Brochure For V0928

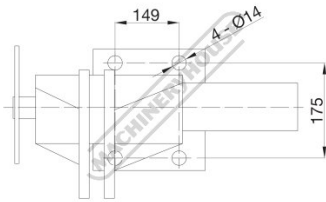


	A	B	C	D	E	F	G	H	I	J	K	L	Jaw Opening
OSV-100	83.3	50	80	Ø10.5	95	117	9.4	135	100	19.05	181.5	319	127
OSV-125	89.5	79	100	Ø10.5	127	148	12	160.4	125	24	231.1	369	150
OSV-150	112.5	97	150	Ø13	148	183	12	194.5	150	24	275.4	470.5	178
OSV-200	140.8	149	199	Ø14	175	210	15.9	236	203.7	31.75	354	606	228



Product Brochure For V0928

Specific Features



Base Dimensions

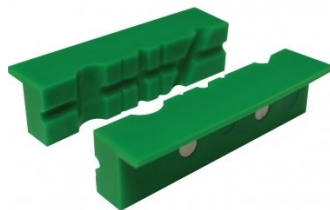
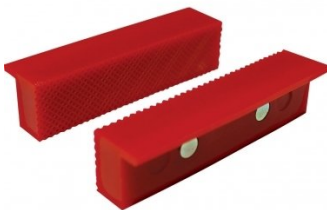
Recommended Accessories

V054
Plastic Magnetic Soft Jaws

V0544
Plastic Magnetic Soft Jaws

V053
Aluminium Magnetic Soft Jaws

V0537
Aluminium Magnetic Soft Jaws



V0534
Aluminium Magnetic Soft Jaws

V050
Vice Brake Bender - Suits
Bench Vices

