

Product Brochure For V086

## 152mm Cast Iron Bench Vice - No. 6

Right Hand Offset  
205mm Jaw Opening



ORDER CODE:	V086
Model:	No. 6
Type:	Bench
Jaw Width (mm):	152
Jaw Height:	~
Jaw Opening (mm):	205
Overall Length (Closed Jaws) (mm):	395
Overall Width (mm):	200
Overall Height (mm):	212
Clamping Force (KN):	~
Nett Weight (kg):	32



### Description

#### 150mm ENGINEERS BENCH VICE

Rigid and robust, the body and sliding jaw are cast from close grained grey iron which is CNC manufactured on all friction surfaces for a smooth reliable action.

The jaws, handle and main screw are steel, the latter having a two-start rolled acme thread to speed the jaws from fully closed to fully open with a minimum of winding.

Product Brochure For V086

---

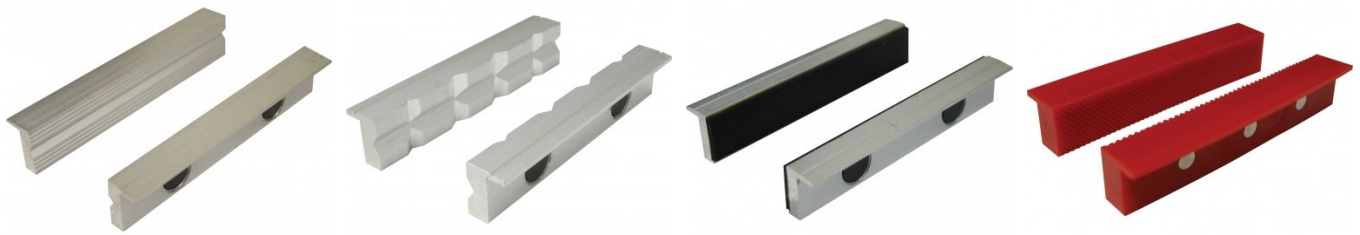
**Recommended Accessories**

V0532  
Aluminium Magnetic Soft Jaws

V0539  
Aluminium Magnetic Soft Jaws

V0536  
Aluminium Magnetic Soft Jaws

V0542  
Plastic Magnetic Soft Jaws



V0546  
Plastic Magnetic Soft Jaws

V052  
Vice Brake Bender - Suits  
Bench Vices

