

Product Brochure For V084

100mm Cast Iron Bench Vice - No. 3

Right Hand Offset

120mm Jaw Opening



ORDER CODE:	V084
Model:	No. 3
Type:	Bench
Jaw Width (mm):	100
Jaw Height:	~
Jaw Opening (mm):	120
Overall Length (Closed Jaws) (mm):	260
Overall Width (mm):	165
Overall Height (mm):	175
Clamping Force (KN):	~
Nett Weight (kg):	13.2



Description

100mm ENGINEERS BENCH VICE

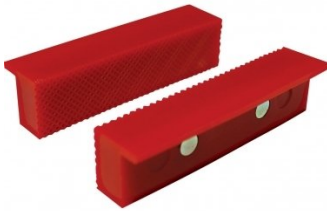
Rigid and robust, the body and sliding jaw are cast from close grained grey iron which is CNC manufactured on all friction surfaces for a smooth reliable action.

The jaws, handle and main screw are steel, the latter having a two-start rolled acme thread to speed the jaws from fully closed to fully open with a minimum of winding.

Product Brochure For V084

Recommended Accessories

V054
Plastic Magnetic Soft Jaws



V0544
Plastic Magnetic Soft Jaws



V053
Aluminium Magnetic Soft Jaws



V0537
Aluminium Magnetic Soft Jaws



V0534
Aluminium Magnetic Soft Jaws



V050
Vice Brake Bender - Suits
Bench Vices

