

## Product Brochure For T766

**6 Drawer - Industrial Tooling Cabinet on Wheels - TCW-954N**

565 x 653 x 954mm

100kg per Drawer



|                                   |                 |
|-----------------------------------|-----------------|
| ORDER CODE:                       | T766            |
| MODEL:                            | TCW-954N        |
| Number of Drawers (No.):          | 6               |
| Drawer Load Capacity (kg):        | 100             |
| Maximum Total Load Capacity (kg): | 390             |
| Includes Backing Panel:           | -               |
| Dimensions (W x D x H) (mm):      | 565 x 653 x 954 |
| Nett Weight (kg):                 | 90              |

**Features**

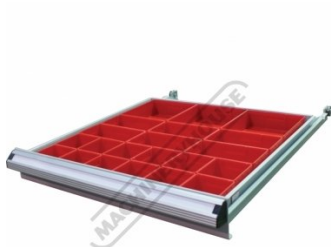
- 2 fixed & 2 swivel Ø125mm caster wheels
- Heavy duty tooling cabinets, ideal for industrial applications and serious workshops
- The sliding drawers are a welded strengthened single rail design coupled with high quality mechanical bearings for long lasting smooth operation
- Each drawer is rated at 100kg load capacity with 97% drawer access
- Single Key lock design for safe storage. Each drawer has a mechanical safety lock which allows one drawer to be opened at a time, preventing the cabinet to tip over
- All top drawers include a series of different size plastic boxes for those small items
- All other drawers come with adjustable steel dividers. The wood top with frame is a great option to rest tooling and precious parts on top of the cabinet

**Includes**

- Top Drawer - 75mm high with moveable plastic division boxes
- Drawer 2 - 75mm high with moveable steel dividers 3x3 layout
- Drawer 3 & 4 - 100mm high with moveable steel dividers 3x3 layout
- Drawer 5 - 150mm high with moveable steel dividers 3x3 layout
- Drawer 6 - 200mm high with moveable steel dividers 3x3 layout

Product Brochure For T766

**Specific Features**



Top Drawer with Plastic Buckets



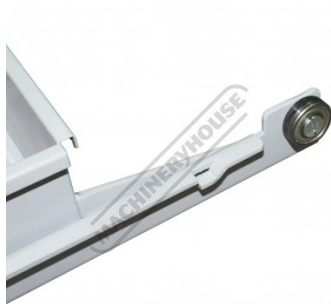
Drawers with Steel Dividers



Heavy Duty Drawers



Drawers with Steel Dividers



Drawer Ball Bearing Arms



Drawer Locking Mechanism



Drawer Lock Bracket



Drawer in Lock Position



Drawer in Unlock Position



Heavy Duty Drawer Slides



Drawers with Safety Lock



2 x Fixed Wheels



2 x Brake Swivel Wheels



Key Lock



Heavy Duty Push Handle



Heavy Duty Drawers with 100kg Load Capacity

Product Brochure For T766



Top Drawer with Plastic Buckets

Show with Top Drawer Open

**Recommended Accessories**

A427  
Plastic Bucket

A428  
Plastic Bucket

A429  
Plastic Bucket

T784  
Steel Divider

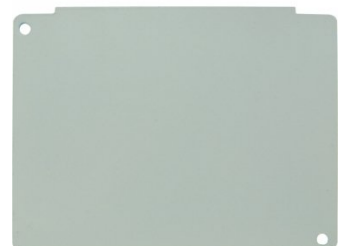


T784A  
Slotted Rail

T786  
Steel Divider

T786A  
Slotted Rail

T787  
Steel Divider



Product Brochure For T766

---

T787A  
Slotted Rail

T788  
Steel Divider

T788A  
Slotted Rail

