

Product Brochure For S9772

CNC Press brake DELEM DA69S - 7 Axis

3200 X 125T - HYBRID ENERGY SAVING SERVO HYDRAULICS

Programmable Z1 & Z2 back gauge fingers, Laser Guarding and offline software

Please Call



ORDER CODE:	S9772
MODEL:	SPB-32125
Control Unit (Type):	DELEM DA69S
Nominal Pressure - Tonnage (Ton):	125
Nominal Pressure - Kilonewtons (kN):	1250
Length of Work Table (mm):	3200
Distance Between Columns (mm):	2655
Throat Depth (mm):	400
Maximum Open Height (mm):	445
Ram Stroke (mm):	200
Machine Axis (No.):	7
Safety Guarding System (Type):	Laser System
X Axis Backgauge Travel (mm):	600
R Axis Backgauge Travel (mm):	150
Z1 & Z2 Axis Back gauge fingers:	2 Programmable + 2 Manual
Table Bed Crowning System (Type):	CNC Controlled System
Motor Power (kW / hp):	10.8 SERVO MOTOR
Motor Voltage (V):	415
Floor Space (mm):	4250 x 2150
Nett Weight (kg):	7500



Description

DELEM DA69S CNC Controller

DELEM's Latest DA-69S flagship control combines solid fundamental press brake control functionality with the latest of enhancements increasing productivity

The DA-69S offers 2D as well as 3D programming that includes automatic bend sequence calculation and collision detection. Full 3D machine set-up with multiple tool stations giving true feedback on the product feasibility and handling. The offline programming software is standard, Profile-S 3D offline increases efficiency and machine uptime. DXF import as well as 3D import (Step/Iges) are available to help convert designs as well as tooling

METALMASTER CNC Press brake

The Metalmaster Synchro series pressbrakes adopt a heavy duty integral welded steel structure that is furnace tempered post welding to relieve residual stresses and ensure accuracy & longevity of the machine.

The hydraulic cylinders are manufactured from high resistance steel incorporating chromium plated ground & lapped pistons to ensure longevity of the Swedish brand SKF hydraulic seals

SERVO HYDRAULIC system consists of electronically controlled proportional valves with independent 3 point closed loop safety monitoring of the two cylinders as well as the main hydraulic system. Servo hydraulic systems can significantly reduce energy consumption compared to traditional hydraulic systems.

Italian manufactured DSP Laser Guarding ensures operator safety whilst in operation. The Laser system is designed to cater for many different types and sizes of top tooling ensuring safety at the appropriate points as required by the AUS/NZ standards.

At the heart of the electrical system is the Italian made MCS safety control module which controls & monitors all pressbrake functionality, the MCS provides dual monitoring & closed loop feedback for all critical safety functions such as Hydraulic valves, Emergency stop circuits, doors, guards, foot pedal, DSP lasers to name a few functions. This ensures the machinery to be Compliant with AS/NZS 4024.1 – 2019 Safety of Machinery Series

Features

- DELEM DA69S CNC Controller
- Large 24" High resolution colour touch screen control mounted on a swivel pendant for optimal ergonomics
- 3D and 2D graphical touch screen programming mode
- 3D visualisation in simulation and production mode
- Automatic bend sequence calculation in 2D and 3D

Product Brochure For S9772

- Easy graphical bend sequence swap and move
- Calculations such as Bend allowance, Developed length, Bottoming force, Hemming force, Auto bumping, Radius programming
- Auto Crowning adjustment
- Tool configuration
- Shop floor control, Job list functionality
- USB, peripheral interface
- Support for Industry 4.0 connectivity (OPC-UA optional)
- Delem Profile S-3D offline software
- DXF import support, IGES 3D File import
- METALMASTER CNC Press brake
- 7 CNC Controlled Axis (Y1, Y2, X, R, V Z1, Z2) as standard.
- Y1 & Y2 Axis is controlled by advanced safety monitored hydraulic proportional valves ensuring accuracy in movement.
- Servo hydraulic system consumes 30–70% less energy compared to conventional fixed-speed hydraulic setups.
- Bending compensation & accuracy is maintained using FAGOR (Spain) Linear scales mounted on either end of the machine bed to measure any frame deflection
- CNC controlled auto crowning table (V) adjusts accordingly based on material, length & thickness specified in program.
- Servo driven X & R Axis provides fast response & accuracy when positioning the backgauge.
- Servo driven Z1 & Z2 Axis positions the back gauge fingers during programming
- X-Axis Linear guides & ball screws (Taiwan) / R-Axis rack & pinion
- X axis travel 500mm - Speed = 200 mm/s
- R axis travel 150mm - Speed = 100 mm/s
- Flip up type back gauge fingers mounted on linear rails complete with micro adjusters are provided as standard
- Advanced push button quick release tooling top clamps allow for the top tooling to be removed from the front of the clamp rather than sliding all of the tooling left & or right, this saves time and ensures you are not shifting all your tooling just to change 1 piece.
- Premium front sheet supports, fully adjustable in the vertical direction & mounted on linear rails for ease of use.

Includes

- DELEM DA69S CNC Touch screen controller
- 7 Axis CNC Control, programmable Z1 & Z2
- Servo Motor Hydraulics for energy saving
- Quick release top tool clamping system with advanced front load tooling system
- 86 Degree Top Punch with Segments & Horns (3 x 800mm, 1 x Segmented 800mm comprising of Left Horn 100, 10, 15, 20, 40, 50, 165, 300, Right Horn 100)
- Bottom Die 4 Way x 86 Degree V'S 16, 22, 35, 50mm
- DSP Safety laser guard system
- MCS safety control for safety compliance & peace of mind

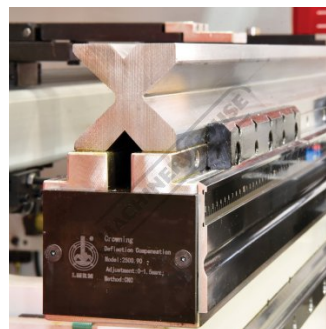
Specific Features



DELEM DA69S Controller



X R Z1 Z2 Programmable Backgauge



4 Way Die Block



Adjustable Sliding Front Sheet Supports



Laser Guarding System With Alignment Guide



CNC Table Crowning



Quick Release Tool Clamps Change Tools Without Sliding Them All Out

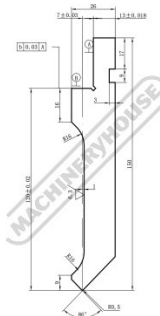


Eco Friendly Servo Driven Hydraulics

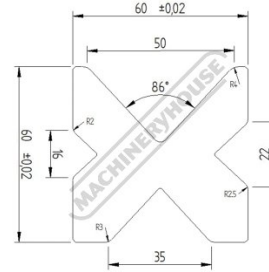
Product Brochure For S9772



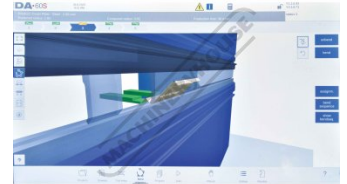
Safety Monitoring Valve



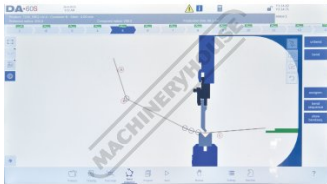
Segmented Top Punch



60x60 4 Way Die 86 Deg Euro



3D Bend Sequence



2D Bend Sequence



3D Drawing



2D Drawing



Main Screen



Electrical Panel

Product Brochure For S9772

Recommended Accessories

S991

86° Top Punch Pressbrake Tooling



S991S

86° Top Punch Pressbrake Tooling - Segmented



S99234

Dieblock - 4 Way 86 Degrees



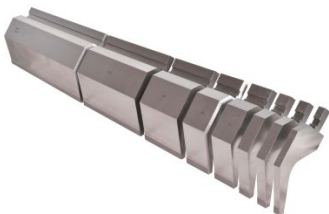
S9920

86° Top Punch Gooseneck Pressbrake Tooling



S9920S

86° Top Punch Gooseneck Pressbrake Tooling - Segmented



S990

35° Top Punch Pressbrake Tooling



S990S

35° Top Punch Pressbrake Tooling - Segmented



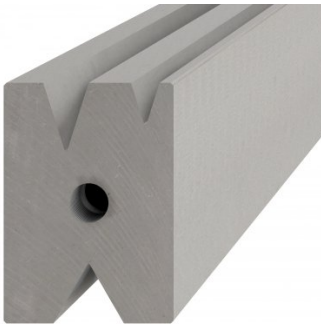
S996

15° Top Punch Pressbrake Tooling



Product Brochure For S9772

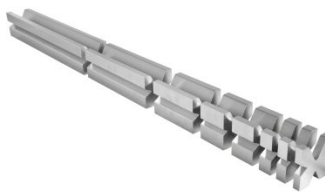
S996A
60mm Die Block Pressbrake Tooling



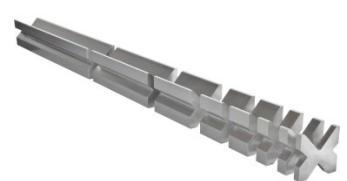
S99230
Dieblock - 4 Way 60 Degrees



S99231
Dieblock - 4 Way 60 Degrees - Segmented



S99235
Dieblock - 4 Way 86 Degrees - Segmented



S99240
Dieblock Heavy Duty, Single V 63mm 86 Degrees



S99242
Dieblock Heavy Duty, Single V 80mm 86 Degrees



S99244
Dieblock Heavy Duty, Single V 100mm 86 Degrees



Q201
Universal Bevel Protractor



Q2015
Universal Dial Bevel Protractor



M800
Rubber Mat - Anti-Fatigue



M805
Rubber Mat - Anti-Fatigue

