

## Product Brochure For S9734

### CNC Press brake DELEM DA66S - 5+2 Axis

3200 X 175T - HYBRID ENERGY SAVING SERVO HYDRAULICS

Motorised Z1 & Z2 back gauge fingers, Laser Guarding and offline software



ORDER CODE:	S9734
MODEL:	SPB-32175
Control Unit (Type):	DELEM DA66S
Nominal Pressure - Tonnage (Ton):	175
Nominal Pressure - Kilonewtons (kN):	1750
Length of Work Table (mm):	3200
Distance Between Columns (mm):	2655
Throat Depth (mm):	410
Maximum Open Height (mm):	445
Ram Stroke (mm):	200
Machine Axis (No.):	5
Safety Guarding System (Type):	Laser System
X Axis Backgauge Travel (mm):	750
R Axis Backgauge Travel (mm):	250
Z1 & Z2 Axis Back gauge fingers:	2 Motorised + 2 Manual
Table Bed Crowning System (Type):	CNC Controlled System
Motor Power (kW / hp):	13.2 - SERVO MOTOR
Motor Voltage (V):	415
Floor Space (mm):	4250 x 2150
Nett Weight (kg):	10000



#### Description

DELEM DA66S CNC Controller

DELEM's Latest DA-66S flagship control combines solid fundamental press brake control functionality with the latest of enhancements increasing productivity

The DA-66S offers 2D programming that includes automatic bend sequence calculation and collision detection. Full 3D machine simulation giving true feedback on the product feasibility and handling. The offline programming software is standard, Profile-S 2D offline increases efficiency and machine uptime. DXF import can be added as an option.

METALMASTER CNC Press brake

The Metalmaster Synchro series pressbrakes adopt a heavy duty integral welded steel structure that is furnace tempered post welding to relieve residual stresses and ensure accuracy & longevity of the machine.

The hydraulic cylinders are manufactured from high resistance steel incorporating chromium plated ground & lapped pistons to ensure longevity of the Swedish brand SKF hydraulic seals

SERVO HYDRAULIC system consists of electronically controlled proportional valves with independent 3 point closed loop safety monitoring of the two cylinders as well as the main hydraulic system. Servo hydraulic systems can significantly reduce energy consumption compared to traditional hydraulic systems.

Italian manufactured DSP Laser Guarding ensures operator safety whilst in operation. The Laser system is designed to cater for many different types and sizes of top tooling ensuring safety at the appropriate points as required by the AUS/NZ standards.

At the heart of the electrical system is the Italian made MCS safety control module which controls & monitors all pressbrake functionality, the MCS provides dual monitoring & closed loop feedback for all critical safety functions such as Hydraulic valves, Emergency stop circuits, doors, guards, foot pedal, DSP lasers to name a few functions. This ensures the machinery to be Compliant with AS/NZS 4024.1 – 2019 Safety of Machinery Series

#### Features

- DELEM DA66S CNC Controller
- Large 24" High resolution colour touch screen control mounted on a swivel pendant for optimal ergonomics
- 2D graphical touch screen programming mode
- 3D visualisation in simulation and production mode
- Automatic bend sequence calculation in 2D
- Easy graphical bend sequence swap and move

## Product Brochure For S9734

- Calculations such as Bend allowance, Developed length, Bottoming force, Hemming force, Auto bumping, Radius programming
- Auto Crowning adjustment
- Tool configuration
- Shop floor control, Job list functionality
- USB, peripheral interface
- Support for Industry 4.0 connectivity (OPC-UA optional)
- Delem Profile S-2D offline software
- DXF import support (as an additional option)
- METALMASTER CNC Press brake
- 5 CNC Controlled Axis (Y1, Y2, X, R, V) + 2 Motorised back gauge fingers (Z1, Z2) as standard.
- Y1 & Y2 Axis is controlled by advanced safety monitored hydraulic proportional valves ensuring accuracy in movement.
- Servo hydraulic system consumes 30–70% less energy compared to conventional fixed-speed hydraulic setups.
- Bending compensation & accuracy is maintained using GIVI (Italy) Linear scales mounted on either end of the machine bed to measure any frame deflection
- CNC controlled auto crowning table (V) adjusts accordingly based on material, length & thickness specified in program.
- X & R Axis are Servo driven providing fast response & accuracy when positioning the backgauge.
- X axis travel 750mm - Speed = 200 mm/s
- R axis travel 250mm - Speed = 100 mm/s
- Z1 & Z2 Back gauge fingers are motorised and easily moved by joystick control to reposition between bending processes.
- Flip up type back gauge fingers mounted on linear rails complete with micro adjusters are provided as standard
- Advanced quick release tooling top clamps allow for the top tooling to be removed from the front of the clamp rather than sliding all of the tooling left & or right, this saves time and ensures you are not shifting all your tooling just to change 1 piece.
- Premium front sheet supports, fully adjustable in the vertical direction & mounted on linear rails for ease of use.

### Includes

- DELEM DA66S CNC Touch screen controller
- 5 Axis CNC Control + motorised Z1 & Z2 Back gauge fingers
- Servo Motor Hydraulics for energy saving
- Quick release top tool clamping system with advanced front load tooling system
- 86 Degree Top Punch with Segments & Horns (3 x 800mm, 1 x Segmented 800mm comprising of Left Horn 100, 10, 15, 20, 40, 50, 165, 300, Right Horn 100)
- Bottom Die 4 Way x 86 Degree V'S 16, 22, 35, 50mm
- DSP Safety laser guard system
- MCS safety control for safety compliance & peace of mind

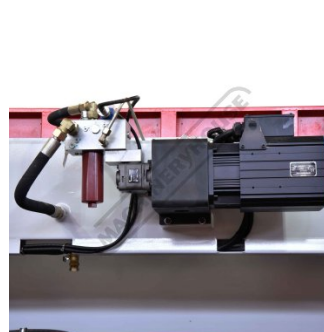
### Specific Features



DELEM DA66S Controller



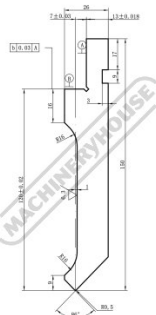
Laser Guarding System With Alignment Guide



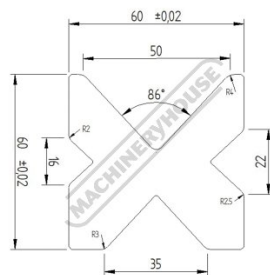
Energy Saving Servo Driven Hydraulics



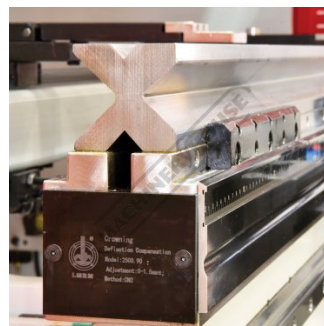
Quick Release Tool Clamps Change Tools Without Sliding Them All Out



Segmented Top Punch



60x60 4 Way Die 86 Deg Euro

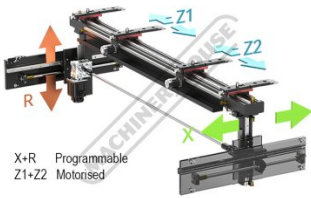


4 Way Die



Adjustable Sliding Front Sheet Supports

Product Brochure For S9734



X R Programmable Z1 Z2 Motorised Backgauge



Z1 Z2 Motorised back gauge finger controls



CNC Table Crowning



Safety Hydraulic Monitoring Valve



Electrical Panel

**Recommended Accessories**

**S991**  
86° Top Punch Pressbrake Tooling



**S991S**  
86° Top Punch Pressbrake Tooling - Segmented



**S99234**  
Dieblock - 4 Way 86 Degrees

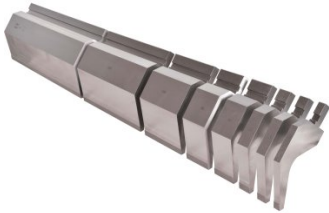


**S9920**  
86° Top Punch Gooseneck Pressbrake Tooling



Product Brochure For S9734

**S9920S**  
86° Top Punch Gooseneck  
Pressbrake Tooling -  
Segmented



**S990**  
35° Top Punch Pressbrake  
Tooling



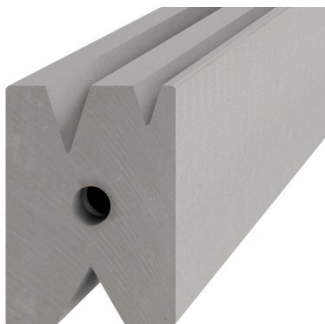
**S990S**  
35° Top Punch Pressbrake  
Tooling - Segmented



**S996**  
15° Top Punch Pressbrake  
Tooling



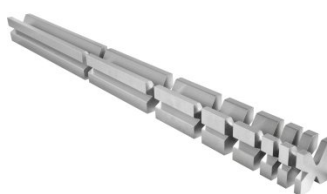
**S996A**  
60mm Die Block Pressbrake  
Tooling



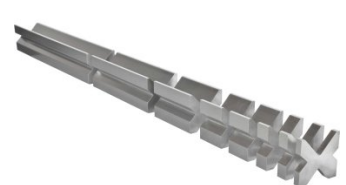
**S99230**  
Dieblock - 4 Way 60 Degrees



**S99231**  
Dieblock - 4 Way 60 Degrees -  
Segmented



**S99235**  
Dieblock - 4 Way 86 Degrees -  
Segmented



**S99240**  
Dieblock Heavy Duty, Single V  
63mm 86 Degrees



**S99242**  
Dieblock Heavy Duty, Single V  
80mm 86 Degrees



**S99244**  
Dieblock Heavy Duty, Single V  
100mm 86 Degrees



**Q201**  
Universal Bevel Protractor



Product Brochure For S9734

---

Q2015  
Universal Dial Bevel Protractor

M800  
Rubber Mat - Anti-Fatigue

M805  
Rubber Mat - Anti-Fatigue

