

Product Brochure For S9731

CNC Press brake DELEM DA66S - 5+2 Axis

2500 X 70T - HYBRID ENERGY SAVING SERVO HYDRAULICS

Motorised Z1 & Z2 back gauge fingers, Laser Guarding and offline software



ORDER CODE:	S9731
MODEL:	SPB-2570
Control Unit (Type):	DELEM DA66S
Nominal Pressure - Tonnage (Ton):	70
Nominal Pressure - Kilonewtons (kN):	700
Length of Work Table (mm):	2500
Distance Between Columns (mm):	1980
Throat Depth (mm):	410
Maximum Open Height (mm):	390
Ram Stroke (mm):	150
Machine Axis (No.):	5
Safety Guarding System (Type):	Laser System
X Axis Backgauge Travel (mm):	750
R Axis Backgauge Travel (mm):	250
Z1 & Z2 Axis Back gauge fingers:	2 x Motorised
Table Bed Crowning System (Type):	CNC Controlled System
Motor Power (kW / hp):	4.4 - SERVO MOTOR
Motor Voltage (V):	415
Floor Space (mm):	3450 x 2150
Nett Weight (kg):	4500



Description

DELEM DA66S CNC Controller

DELEM's Latest DA-66S flagship control combines solid fundamental press brake control functionality with the latest of enhancements increasing productivity

The DA-66S offers 2D programming that includes automatic bend sequence calculation and collision detection. Full 3D machine simulation giving true feedback on the product feasibility and handling. The offline programming software is standard, Profile-S 2D offline increases efficiency and machine uptime. DXF import can be added as an option.

METALMASTER CNC Press brake

The Metalmaster Synchro series pressbrakes adopt a heavy duty integral welded steel structure that is furnace tempered post welding to relieve residual stresses and ensure accuracy & longevity of the machine.

The hydraulic cylinders are manufactured from high resistance steel incorporating chromium plated ground & lapped pistons to ensure longevity of the Swedish brand SKF hydraulic seals

SERVO HYDRAULIC system consists of electronically controlled proportional valves with independent 3 point closed loop safety monitoring of the two cylinders as well as the main hydraulic system. Servo hydraulic systems can significantly reduce energy consumption compared to traditional hydraulic systems.

Italian manufactured DSP Laser Guarding ensures operator safety whilst in operation. The Laser system is designed to cater for many different types and sizes of top tooling ensuring safety at the appropriate points as required by the AUS/NZ standards.

At the heart of the electrical system is the Italian made MCS safety control module which controls & monitors all pressbrake functionality, the MCS provides dual monitoring & closed loop feedback for all critical safety functions such as Hydraulic valves, Emergency stop circuits, doors, guards, foot pedal, DSP lasers to name a few functions. This ensures the machinery to be Compliant with AS/NZS 4024.1 – 2019 Safety of Machinery Series

Features

- DELEM DA66S CNC Controller
- Large 24" High resolution colour touch screen control mounted on a swivel pendant for optimal ergonomics
- 2D graphical touch screen programming mode
- 3D visualisation in simulation and production mode
- Automatic bend sequence calculation in 2D
- Easy graphical bend sequence swap and move

Product Brochure For S9731

- Calculations such as Bend allowance, Developed length, Bottoming force, Hemming force, Auto bumping, Radius programming
- Auto Crowning adjustment
- Tool configuration
- Shop floor control, Job list functionality
- USB, peripheral interface
- Support for Industry 4.0 connectivity (OPC-UA optional)
- Delem Profile S-2D offline software
- DXF import support (as an additional option)
- METALMASTER CNC Press brake
- 5 CNC Controlled Axis (Y1, Y2, X, R, V) + 2 Motorised back gauge fingers (Z1, Z2) as standard.
- Y1 & Y2 Axis is controlled by advanced safety monitored hydraulic proportional valves ensuring accuracy in movement.
- Servo hydraulic system consumes 30–70% less energy compared to conventional fixed-speed hydraulic setups.
- Bending compensation & accuracy is maintained using FAGOR (Spain) Linear scales mounted on either end of the machine bed to measure any frame deflection
- CNC controlled auto crowning table (V) adjusts accordingly based on material, length & thickness specified in program.
- X & R Axis are Servo driven providing fast response & accuracy when positioning the backgauge.
- X axis travel 750mm - Speed = 200 mm/s
- R axis travel 250mm - Speed = 100 mm/s
- Z1 & Z2 Back gauge fingers are motorised and easily moved by joystick control to reposition between bending processes.
- Flip up type back gauge fingers mounted on linear rails complete with micro adjusters are provided as standard
- Advanced quick release tooling top clamps allow for the top tooling to be removed from the front of the clamp rather than sliding all of the tooling left & or right, this saves time and ensures you are not shifting all your tooling just to change 1 piece.
- Premium front sheet supports, fully adjustable in the vertical direction & mounted on linear rails for ease of use.

Includes

- DELEM DA66S CNC Touch screen controller
- 5 Axis CNC Control + motorised Z1 & Z2 Back gauge fingers
- Servo Motor Hydraulics for energy saving
- Quick release top tool clamping system with advanced front load tooling system
- 35 Degree Top Punch with Segments (4 x 500mm, 1 x Segmented 500mm comprising of 10, 15, 20, 40, 50, 2 x 100, 165)
- Bottom Die 4 Way x 86 Degree V'S 16, 22, 35, 50mm
- DSP Safety laser guard system
- MCS safety control for safety compliance & peace of mind

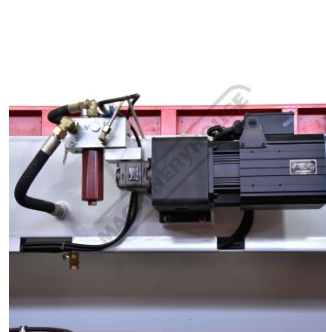
Specific Features



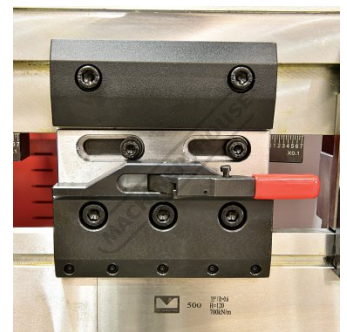
DELEM DA66S Controller



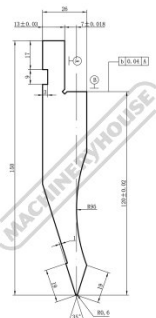
Laser Guarding System With Alignment Guide



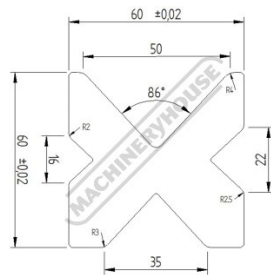
Energy Saving Servo Driven Hydraulics



Quick Release Tool Clamps Change Tools Without Sliding Them All Out



35 Degree Top Tooling



60x60 4 Way Die 86 Deg Euro

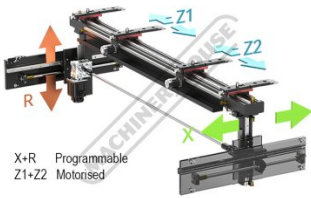


4 Way Die



Adjustable Sliding Front Sheet Supports

Product Brochure For S9731



X R Programmable Z1 Z2 Motorised Backgauge



Z1 Z2 Motorised back gauge finger controls



CNC Table Crowning



Safety Hydraulic Monitoring Valve



Electrical Panel

Recommended Accessories

S991
86° Top Punch Pressbrake Tooling



S991S
86° Top Punch Pressbrake Tooling - Segmented



S99234
Dieblock - 4 Way 86 Degrees

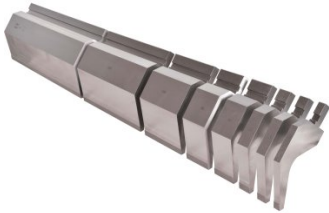


S9920
86° Top Punch Gooseneck Pressbrake Tooling



Product Brochure For S9731

S9920S
86° Top Punch Gooseneck
Pressbrake Tooling -
Segmented



S990
35° Top Punch Pressbrake
Tooling



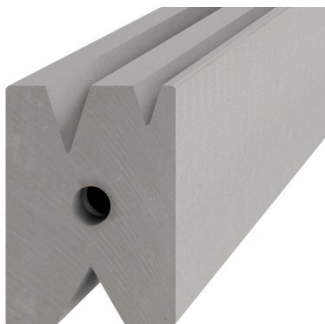
S990S
35° Top Punch Pressbrake
Tooling - Segmented



S996
15° Top Punch Pressbrake
Tooling



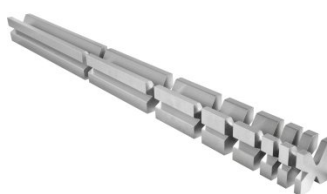
S996A
60mm Die Block Pressbrake
Tooling



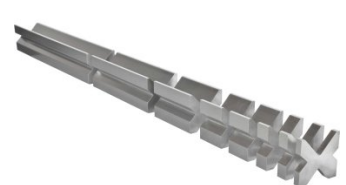
S99230
Dieblock - 4 Way 60 Degrees



S99231
Dieblock - 4 Way 60 Degrees -
Segmented



S99235
Dieblock - 4 Way 86 Degrees -
Segmented



S99240
Dieblock Heavy Duty, Single V
63mm 86 Degrees



S99242
Dieblock Heavy Duty, Single V
80mm 86 Degrees



S99244
Dieblock Heavy Duty, Single V
100mm 86 Degrees



Q201
Universal Bevel Protractor



Product Brochure For S9731

Q2015
Universal Dial Bevel Protractor

M800
Rubber Mat - Anti-Fatigue

M805
Rubber Mat - Anti-Fatigue

