

Product Brochure For S97100

CNC Press brake CYBELEC Touch Draw - 5 Axis - SPB-1640

1600 X 40T CYBELEC CT12 - 5 AXIS

Includes Programmable Y1, Y2, X, V & R-Axis & Laser Guarding

Back In Stock Soon

Ex GST

Inc GST

\$74,360.00 **\$85,514.00**



| | |
|--------------------------------------|-----------------------|
| ORDER CODE: | S97100 |
| MODEL: | SPB-1640 |
| Control Unit (Type): | CYBELEC TOUCH 12 |
| Nominal Pressure - Tonnage (Ton): | 40 |
| Nominal Pressure - Kilonewtons (kN): | 400 |
| Length of Work Table (mm): | 1600 |
| Distance Between Columns (mm): | 1200 |
| Throat Depth (mm): | 250 |
| Maximum Open Height (mm): | 370 |
| Ram Stroke (mm): | 150 |
| Machine Axis (No.): | 5 |
| Safety Guarding System (Type): | Laser System |
| X Axis Backgauge Travel (mm): | 600 |
| R Axis Backgauge Travel (mm): | 150 |
| Z1 & Z2 Axis Back gauge fingers: | ~ |
| Table Bed Crowning System (Type): | CNC Controlled System |
| Motor Power (kW / hp): | 4 / 5.5 |
| Motor Voltage (V): | 415 |
| Floor Space (mm): | 2400 x 1770 |
| Nett Weight (kg): | 2800 |



Description

CYBELEC CybTouch CNC Controller

The CybTouch 12 is specifically developed for synchronised press brakes, Headquartered in Switzerland Cybelec is at the forefront of pressbrake controller technology.

The control features an intuitive interface with an advanced array of bending functions with vivid colour & large touch key interactive touch software. Interactive On-line help, and many other automatic functions that constantly guide the operator. CybTouch controllers are very easy to operate.

METALMASTER CNC Press brake

The Metalmaster Synchro series pressbrakes adopt a heavy duty integral welded steel structure that is furnace tempered post welding to relieve residual stresses and ensure accuracy & longevity of the machine.

The hydraulic cylinders are manufactured from high resistance steel incorporating chromium plated ground & lapped pistons to ensure longevity of the Swedish brand SKF hydraulic seals

The hydraulics system consists of electronically controlled proportional valves with independent 3 point closed loop safety monitoring of the two cylinders as well as the main hydraulic system.

Italian manufactured DSP Laser Guarding ensures operator safety whilst in operation. The Laser system is designed to cater for many different types and sizes of top tooling ensuring safety at the appropriate points as required by the AUS/NZ standards.

At the heart of the electrical system is the Italian made MCS safety control module which controls & monitors all pressbrake functionality, the MCS provides dual monitoring & closed loop feedback for all critical safety functions such as Hydraulic valves, Emergency stop circuits, doors, guards, foot pedal, DSP lasers to name a few functions. This ensures the machinery to be Compliant with AS/NZS 4024.1 – 2019 Safety of Machinery Series

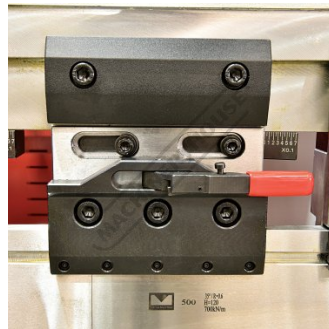
Features

- CYBELEC CybTouch CNC Controller
- Large, vivid and high-contrast fully touchscreen control mounted on a swivel pendant for optimal ergonomics
- Simple pages, clear display, large keys
- Intuitive 2D graphical touch draw part profile programming with auto bend sequencing
- Bend material allowance calculation
- Radius bump bending calculation function
- Angle, pressure and crowning calculation & management

Product Brochure For S97100



Adjustable Sliding Front Sheet Supports



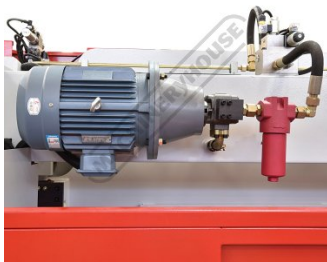
Quick Release Tool Clamps Change Tools Without Sliding Them All Out



Electrical Panel



CNC Table Crowning



Rear Hydraulics Close up



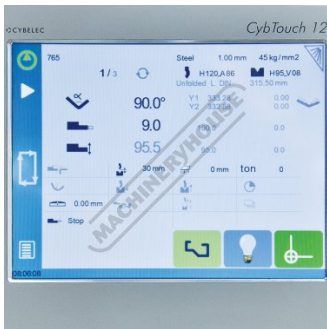
Safety Monitoring Valve



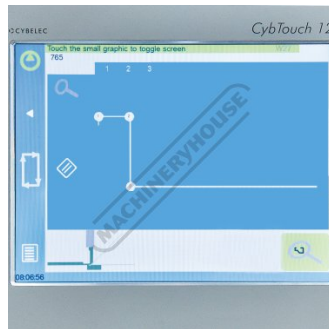
Electrical Cabinet



Cyb Touch12 CNC Control



Main Screen



Touch Draw Graphical Programming



Bend Simulation 1



Bend Simulation 2



Bend Options



Bending Sequence List



Easy Bend Page

Product Brochure For S97100

Recommended Accessories

S989
35° Top Punch Pressbrake
Tooling



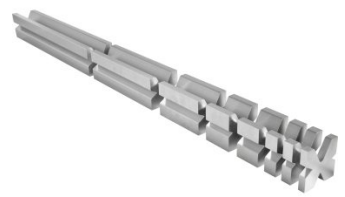
S989S
35° Top Punch Pressbrake
Tooling - Segmented



S99230
Dieblock - 4 Way 60 Degrees



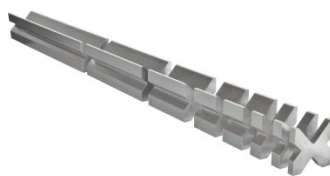
S99231
Dieblock - 4 Way 60 Degrees -
Segmented



S99234
Dieblock - 4 Way 86 Degrees



S99235
Dieblock - 4 Way 86 Degrees -
Segmented



S99240
Dieblock Heavy Duty, Single V
63mm 86 Degrees



S99242
Dieblock Heavy Duty, Single V
80mm 86 Degrees



Product Brochure For S97100

S99244
Dieblock Heavy Duty, Single V
100mm 86 Degrees



Q201
Universal Bevel Protractor



Q2015
Universal Dial Bevel Protractor



M800
Rubber Mat - Anti-Fatigue



M805
Rubber Mat - Anti-Fatigue

