

## Product Brochure For S896G

# APHS PRO 41200 - Hydraulic CNC Pressbrake

200T x 4100mm, 5 Axis, Delem DA69T Touch Screen Control  
Includes Programmable X, Y1, Y2, V & R-Axis. CNC Table Crowning  
& Laser Guarding System

**Back In Stock Soon**

Ex GST

Inc GST

**\$172,424.00 \$198,287.60**



ORDER CODE:	S896G
MODEL:	APHS PRO 41200
Control Unit (Type):	DELEM DA69T CNC
Nominal Pressure - Tonnage (Ton):	200
Nominal Pressure - Kilonewtons (kN):	2000
Length of Work Table (mm):	4100
Distance Between Columns (mm):	3550
Throat Depth (mm):	410
Maximum Open Height (mm):	530
Ram Stroke (mm):	260
Machine Axis (No.):	5
Safety Guarding System (Type):	Laser System
Ballscrew Backgauge Travel (mm):	750
Leadscrew Backgauge Travel:	~
Table Bed Crowning System (Type):	CNC Controlled System
Motor Power (kW / hp):	18.5 / 25
Motor Voltage (V):	415
Floor Space (Includes Front Sheet supports) (mm):	~
Nett Weight (kg):	12500



## Description

### Delem DA-69T CNC CONTROL UNIT

The new generation DA-Touch controls offers an even higher grade of efficiency in programming, operation and control of today's press brakes. Ease of use combined with state-of-the-art technology go hand in hand, improving productivity.

The touch screen gives access to the proven Delem user-interface and enables direct navigation between programming and production. Functions are directly located where you need them, offering optimised ergonomics throughout the application.

The DA-69T offers 2D as well as 3D programming that includes automatic bend sequence calculation and collision detection. Full 3D machine set-up with multiple tool stations giving true feedback on the product feasibility and handling.

Highly effective control algorithms optimise the machine cycle and minimise set-up time. This makes using press brakes easier, more efficient and more versatile than ever.

3D and 2D graphical touch screen programming mode  
3D visualisation in simulation and production  
17" high resolution colour TFT  
Full touch screen control (IR-touch)  
Windows application suite  
Standard Windows networking  
3D graphics acceleration  
Delem Modusys compatibility (module scalability and adaptivity)  
USB flash memory drive  
Open system architecture  
Sensor bending & correction interface

## Features

- Baykal machine frames are manufactured from hot rolled steel sheets of Fe 520. The two side frames are obtained from the same sheet to ensure the same elasticity under stress. The ram and table are also manufactured from Fe 520 steel and are designed to avoid deflection.
- The hydraulic cylinders are manufactured from high resistance steel chromium plated & ground to size. Cylinder pistons are lapped to ensure longevity of the hydraulic seals
- The hydraulic unit consists of electronically controlled proportional valves with independent closed loop control of the two cylinders providing full synchronous control.
- German manufactured Laser Safety Guard System mounted at each end of machine ensuring correct interfacing and operator safety whilst

## Product Brochure For S896G

---

in operation. The Laser system is designed so each guard will slide up or down to allow for many different types and sizes of tooling enabling safety at the appropriate points as required by the Australian standards. Manual height adjustment with scales and lock for easy positioning.

- Sliding front sheet supports enable a wide range of material sizes to be aligned and supported at the correct required width and height. The sheet supports are mounted on precision linear guides for ease of movement. This design can also be adjusted vertically to support material with return bends.
- Ram positions (Left & Right) are obtained from independent linear encoders whilst monitoring and adjusting proportional valves. This produces a closed loop system, with guaranteed beam positioning of +/- 0.01mm (Y1 and Y2 Axis)
- Accuracy is further ensured by mounting the linear encoders on a C-frame connected directly to the Bed, rather than the side frames. This ensures that deflection of the side frames and uneven loads have no effect on Beam position.
  
- CNC Controlled Axis (Y1, Y2, X, R, & V) as standard. Multi Axis available
- Backgauge:- X-R with AC servo brushless motors
- "X" axes stroke 750mm
- "X" axis speed 350mm/sec
- "R" axes stroke 160mm
- "R" axis speed 240mm/sec
- Mechanical accuracy 0.1mm
- Micro adjustable fingers with hardened 2D stops mounted on linear guideways
- Precision linear scale measurement : GIVI MISURE
- Front support arms fully adjustable mounted on linear rails
- Quality Siemens Electric control switch Gear is used
- Pendant control panel centralising all Press-Brake Functions
- Foot Pedal Control
- Hydraulics: Hoerbiger & Parker (German & USA)
- Electrics: Siemens or Telemecanique (German or French)
- Scales: Misure (Italian)
- Tooling: Technostamp or Roller (Italian)
- Mild steel capacity is rated on hot rolled material with 250MPA

### **Includes**

- Delem DA-69T 3D & 2D Graphical CNC Control
- Profile-T 3D offline software
- X-R Backgauge
- V - table NC auto crowning
- Quick release top tool clamping system
- AKAS Safety laser front guarding system
- Mechanical crowning on top intermediate clamps
- Automatic crowning on bottom table
- Narrow bottom table for Euro style tooling

Product Brochure For S896G

# APHS PRO

The robust and reliable solution for high-quality bending results in all sheet thicknesses.

01

### ACCURATE

It's rapid, accurate, and repeatable thanks to the design and hydraulic system.

02

### AFFORDABLE

APHS PRO series combined with high quality and are well-priced.

03

### FLEXIBLE

Wide range of lengths and tonnages are available.



Types		1254x40	2104x60	2606x90	3104x90	3106x120	3108x160	3110x200	3112x240	3116x300	3120x440	4106x160	4108x200	4110x240
Capacity	kN	400	600	900	900	1200	1600	2000	2400	3000	4400	1600	2000	2400
Motor Output	kW	4	5,5	7,5	7,5	11	15	19	22	22	30	15	18,5	22
Oil Tank Capacity	Lt	80	140	140	140	140	210	210	210	280	450	210	210	210
Speeds (mm/s)	Approach	160	150	150	160	160	160	150	130	110	80	170	160	150
	Working	10	10	10	10	10	10	10	10	8	8	10	10	10
	Return	130	130	130	130	130	130	130	120	100	70	120	110	100
Approx. Weight	Ton	3,3	5,4	7,1	7,9	8,4	9,7	10	11	15	22	12	12,5	14
Bending Length	A mm	1250	2100	2600	3100	3100	3100	3100	3100	3100	3100	4100	4100	4100
Inside Frames	B mm	1070	1600	2050	2550	2550	2550	2550	2550	2550	2550	3550	3550	3550
Side Frame Width	C mm	1470	1580	1580	1590	1590	1600	1600	1610	1815	2060	1600	1600	1610
Bed Height	G mm	800	880	880	880	880	880	880	880	905	1005	880	880	880
Daylight Opening	K mm	455	475	540	530	540	540	530	530	660	575	530	530	530
Stroke	L mm	215	210	260	260	260	260	260	260	320	320	260	260	260
Table Width	M mm	60	60	60	60	60	60	90	90	380	450	60	90	90
Throat Gap	N mm	410	410	410	410	410	410	410	410	500	500	410	410	410

Design and specifications are subject to change without notice

Product Brochure For S896G

**Specific Features**



Laser Guarding



CNC Table Crowning W Axis



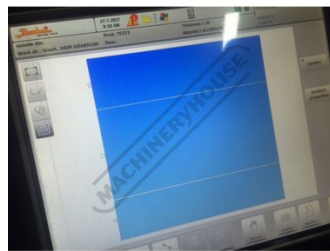
Sheet Support arms



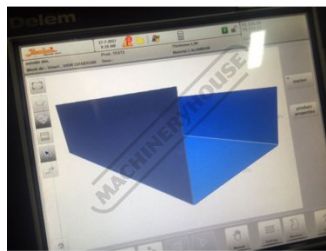
DELEM DA69T



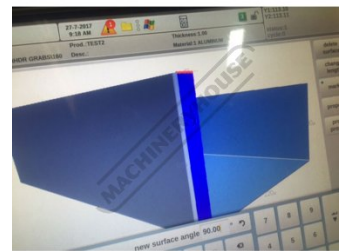
2D Drawing



2D Model



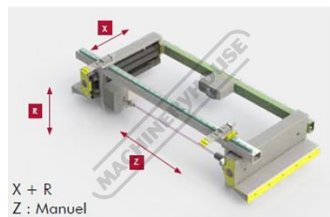
3D Model



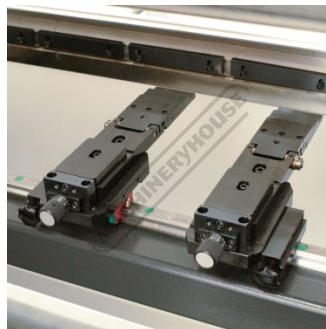
3D Bending Simulation



X R Backgauge



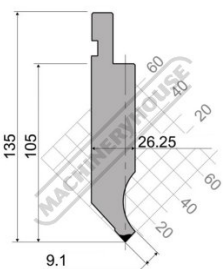
XR Backgauge



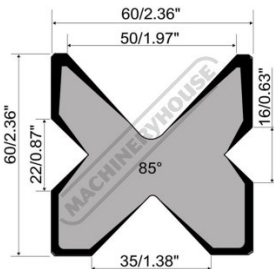
Micro Adjustment Backstop



Quick Action Clamps



Top Tooling



4V Die Block



Mobile Foot Control

Product Brochure For S896G

**Recommended Accessories**

**S990**

35° Top Punch Pressbrake Tooling



**S990S**

35° Top Punch Pressbrake Tooling - Segmented



**S991**

86° Top Punch Pressbrake Tooling



**S991S**

86° Top Punch Pressbrake Tooling - Segmented



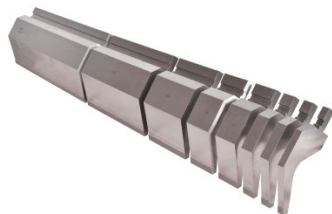
**S9920**

86° Top Punch Gooseneck Pressbrake Tooling



**S9920S**

86° Top Punch Gooseneck Pressbrake Tooling - Segmented



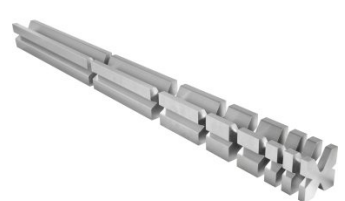
**S99230**

Dieblock - 4 Way 60 Degrees



**S99231**

Dieblock - 4 Way 60 Degrees - Segmented

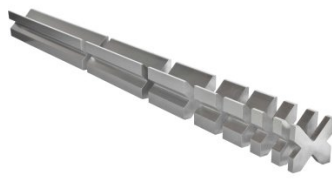


Product Brochure For S896G

**S99234**  
Dieblock - 4 Way 86 Degrees



**S99235**  
Dieblock - 4 Way 86 Degrees - Segmented



**S99240**  
Dieblock Heavy Duty, Single V 63mm 86 Degrees



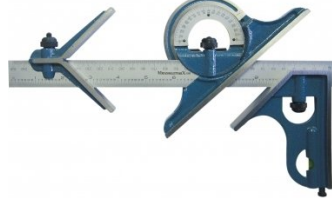
**S99242**  
Dieblock Heavy Duty, Single V 80mm 86 Degrees



**S99244**  
Dieblock Heavy Duty, Single V 100mm 86 Degrees



**Q200**  
Combination Set



**Q200A**  
Combination Set



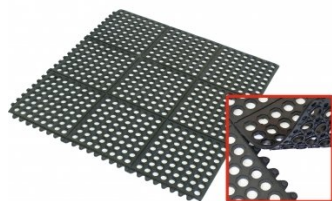
**Q201**  
Universal Bevel Protractor



**M800**  
Rubber Mat - Anti-Fatigue



**M805**  
Rubber Mat - Anti-Fatigue



**O043**  
Rust & Corrosion Preventive - Penetrant & Lubricant



**O042**  
General Purpose Lubricant & Corrosion Inhibitor



## Product Brochure For S896G

---

O044

Rust & Corrosion Preventive -  
Penetrant & Lubrication

