

Product Brochure For S885F

CNC Press brake DELEM DA69T - 7 Axis - APHS-31160

160T x 3100mm, 7 Axis, Delem DA69T Touch Screen Control
Includes Programmable X, Y1, Y2, V, Z1, Z2 & R-Axis. CNC Table
Crowning & Laser Guarding System



ORDER CODE:	S885F
MODEL:	APHS-31160
Control Unit (Type):	DELEM DA69T CNC
Nominal Pressure - Tonnage (Ton):	160
Nominal Pressure - Kilonewtons (kN):	1600
Length of Work Table (mm):	3100
Distance Between Columns (mm):	2550
Throat Depth (mm):	410
Maximum Open Height (mm):	530
Ram Stroke (mm):	260
Machine Axis (No.):	7
Safety Guarding System (Type):	Laser System
X Axis Backgauge Travel (mm):	750
R Axis Backgauge Travel (mm):	~
Z1 & Z2 Axis Back gauge fingers:	~
Table Bed Crowning System (Type):	CNC Controlled System
Motor Power (kW / hp):	15 / 20
Motor Voltage (V):	415
Floor Space (mm):	~
Nett Weight (kg):	9700



Description

Delem DA-69T CNC CONTROL UNIT

The new generation DA-Touch controls offers an even higher grade of efficiency in programming, operation and control of today's press brakes. Ease of use combined with state-of-the-art technology go hand in hand, improving productivity.

The touch screen gives access to the proven Delem user-interface and enables direct navigation between programming and production. Functions are directly located where you need them, offering optimised ergonomics throughout the application.

The DA-69T offers 2D as well as 3D programming that includes automatic bend sequence calculation and collision detection. Full 3D machine set-up with multiple tool stations giving true feedback on the product feasibility and handling.

Highly effective control algorithms optimise the machine cycle and minimise set-up time. This makes using press brakes easier, more efficient and more versatile than ever.

The OEM-panel located above the screen, reserved for machine functions and OEM application switches, is integrated in the design and can be used depending on the required application.

3D and 2D graphical touch screen programming mode
3D visualisation in simulation and production
17" high resolution colour TFT
Full Windows application suite
Delem Modusys compatibility (module scalability and adaptivity)
USB, peripheral interfacing
Open system architecture
Sensor bending & correction interface

Features

- Baykal machine frames consist of a monolithic structure with hot rolled steel sheets of Fe 520 welded together. The two housings (shoulders) are obtained from the same sheet to ensure the same elasticity under stress. The ram and table are also obtained from Fe 520 steel sheets and are opportunely dimensioned to avoid deflection
- The hydraulic cylinders are manufactured from high resistance steel incorporating chromium plated & ground rods. Completed with lapped pistons to ensure longevity of the hydraulic seals
- The hydraulic unit is made by major companies in the field. It consists of electronically controlled proportional valves with independent

Product Brochure For S885F

- closed loop control of the two cylinders.
- 7 CNC Controlled Axis (Y1, Y2, X, R, Z1, Z2, V) as standard. Multi Axis available
- Full electronic Synchronisation with proportional valve technology.
- German manufactured Laser-Safe Guard System mounted at each end of machine ensuring correct interfacing and operator safety whilst in operation. Laser-safe is designed so each guard will slide up or down to allow for many different types and sizes of tooling enabling safety at the appropriate points as required by the Australian standards. Manual height adjustment with scales and lock for easy positioning.
- Sliding steel fabricated front sheet supports enabling a wide range of material sizes to be aligned and supported at the correct required width and height. This function is achieved by the precision linear guides mounted on the front apron parallel to the tooling length. This design can also be adjusted vertically to support material with return bends.
- Ram positions (Left & Right) are obtained from independent linear encoders whilst monitoring and adjusting proportional valves. This produces a double closed loop system, with guaranteed beam positioning of +/- 0.01mm (Y1 and Y2 Axis)
- Electronic control of bending parallelism is via the Delem DA-69T CNC Control
- Accuracy is further ensured by mounting the linear encoders on a C-frame connected directly to the Bed, rather than the side frames. This ensures that deflection of the side frames and uneven loads have no effect on Beam position.
- CNC Controlled Back-gauge:- X-Axis stroke 750mm with DC motor mounted on hardened and machined guides, translation via spherical recirculating ball screws
- Delem DA-69T CNC Control fully programmable with 3D & 2D graphics offline software included
- Precision linear scale measurement : HEIDENHAIN or GIVI MISURE
- Y1-Y2 - X-R-Z1-Z2 CNC - controlled stroke axes
- CNC controlled hardened ballscrew backgauge with X-axis
- X axis range = 750mm speed = 350mm/s max.
- 2 micrometric backgauge finger stops with lateral adjustment
- Front support arms fully adjustable mounted on linear rails x 2 off easy positioning over the complete working length of the machine
- Quality Siemens Electric control switch Gear is used
- Pendant control panel centralising all Press-Brake Functions
- Foot Pedal Control, Emergency stop buttons
- 2 axis tower type backgauge with AC servo motors
- X-R CNC axis ,
- bar length 2400mm (size 200x150mm)
- "X" axes stroke 750mm
- "R" axes stroke 160mm
- Z1, Z2 axes stroke 2550mm
- 2 micro adjustable fingers with 2D stops sliding all long the bar
- Hardening on fingers
- All movements on ball screws and ball guides
- AC servo brushless motors
- "X" axis speed of 350mm/sec
- "R" axis speed 240mm/sec
- Mechanical accuracy 0.1mm
- Hydraulics: Hoerbiger & Parker (German & USA)
- Electrics: Siemens or Telemecanique (German or French)
- Scales: Misure or Heidenhain (Italian or Dutch)
- Tooling: Technostamp or Roller (Italian)
- Control: Delem DA-69T
- PLC: AKAS
- Mild steel capacity is rated on hot rolled material with 250MPA

Includes

- Delem DA-69T 3D & 2D Graphical CNC Control
- Offline graphical 3D software
- Y1-Y2 cylinder axis
- X - R Backgauge
- V - table NC auto crowning
- Quick release top tool clamping system
- AKAS Safety laser front guarding system
- Mechanical crowning on top intermediate clamps

Product Brochure For S885F

Specific Features



Rear Safety Guarding with Sliding Door



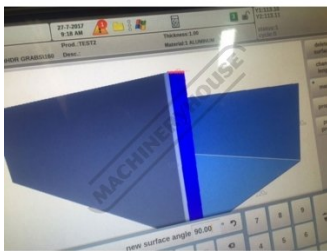
CNC Table Crowning W Axis



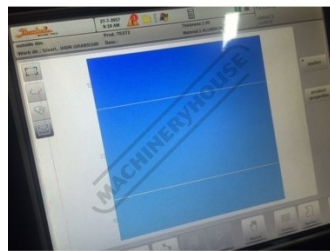
Laser Guarding System



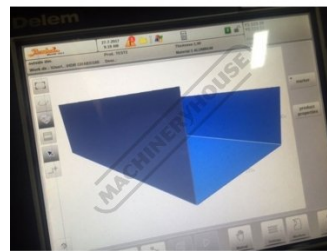
Delem DA 69T CNC Control



Delem DA 69T



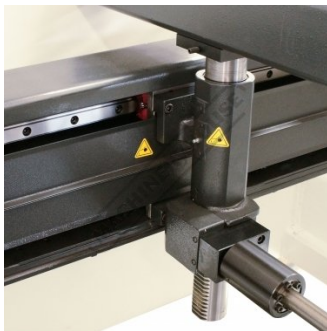
Delem DA 69T



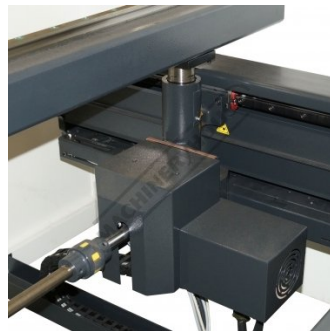
Delem DA 69T



Delem DA 69T



Ball Screw Backgauge with Linear Guideways



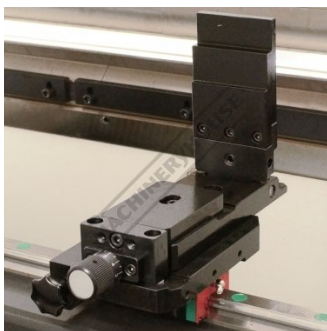
CNC Ball Screw Backgauge with R Axis



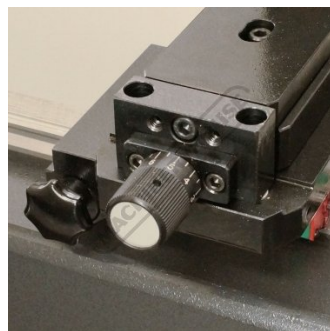
Backgauge Manual Fine Adjustment



Micro Adjustment Backstop



Flip up Backstop



Backstop Micro Adjustment Dial



Quick Action Intermediate Clamps



Sliding Front Sheet Supports on Linear Guideways

Product Brochure For S885F



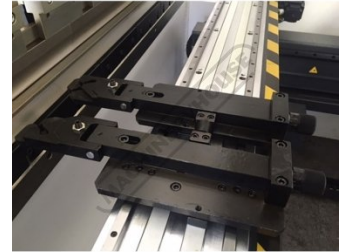
Front Sheet Support Height Adjustment



Z1 Z2 Motor Drive



Oil Filter Indicator



Universal Backgauge Fingers



Hour Meter



Mobile Foot Control



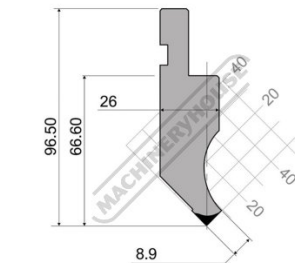
Machine Control Panel



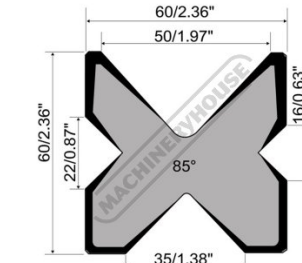
Electrical Cabinet



Shown with Optional Ball Transfer Tables



Top Tooling



Multi V Die Block

Product Brochure For S885F

Recommended Accessories

S990

35° Top Punch Pressbrake Tooling



S990S

35° Top Punch Pressbrake Tooling - Segmented



S991

86° Top Punch Pressbrake Tooling



S991S

86° Top Punch Pressbrake Tooling - Segmented



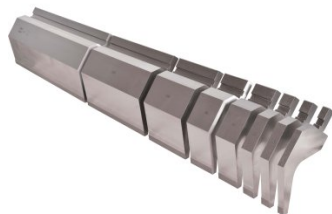
S9920

86° Top Punch Gooseneck Pressbrake Tooling



S9920S

86° Top Punch Gooseneck Pressbrake Tooling - Segmented



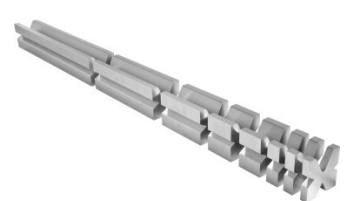
S99230

Dieblock - 4 Way 60 Degrees



S99231

Dieblock - 4 Way 60 Degrees - Segmented

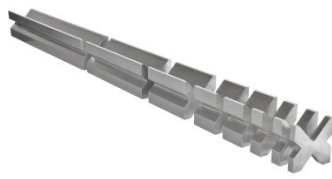


Product Brochure For S885F

S99234
Dieblock - 4 Way 86 Degrees



S99235
Dieblock - 4 Way 86 Degrees - Segmented



S99240
Dieblock Heavy Duty, Single V 63mm 86 Degrees



S99242
Dieblock Heavy Duty, Single V 80mm 86 Degrees



S99244
Dieblock Heavy Duty, Single V 100mm 86 Degrees



Q200
Combination Set



Q200A
Combination Set



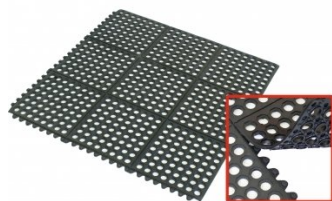
Q201
Universal Bevel Protractor



M800
Rubber Mat - Anti-Fatigue



M805
Rubber Mat - Anti-Fatigue



O043
Rust & Corrosion Preventive



O042
General Purpose Lubricant & Corrosion Inhibitor



Product Brochure For S885F

O044

Rust & Corrosion Preventive

