

## Product Brochure For S229

# Cast Iron English Wheel - Bench Model - MRHB-14

1.2mm Mild Steel  
700mm Throat Depth



ORDER CODE:	S229
MODEL:	MRHB-14
Mild Steel - Capacity (mm / Gauge):	1.2 / 18
Aluminium - Capacity (mm / Gauge):	~
Copper - Capacity (mm / Gauge):	1.6
Throat Capacity (mm):	700
Upper Wheel (Ø x W mm):	Ø200 x 50
Lower Anvils - Radius (mm):	26, 80, 180, 300
Working Height (mm):	~
Nett Weight (kg):	130



## Description

Looking for the ultimate in an English wheeling machine... well here it is. Australian designed & manufactured by Motorretro Australia this machine is a modern interpretation of the classic full size wheeling machine. This is the first time in approximately forty years that an Australian made cast iron machine has been manufactured & Motorretro is proud to offer this machine for sale to the public and professionals.

Locally manufactured from high grade cast iron & quality materials this machine is perfect for a compact work space while still retaining all the advantages of a solid & robust cast iron machine. The HB-14 Bench Model - English wheel is designed to allow craftsmen to form smooth curves from flat sheets of metal. They are mainly used in car, motorcycle, aviation and racing car construction or restoration where sheet metal panels need to have compound curves formed. This heavy duty cast iron machine has a large 700mm throat which allows a capacity of 1.2mm for mild and stainless steel along with 1.6mm for Copper, Brass & Aluminium.

All the lower anvil wheels are manufactured with blended radius contact flats. Contact flats are specifically designed to help increase the user's likelihood of wheeling a panel to shape without producing ridges in the work piece provided the correct pressure is applied.

Supplied with a 200mm diameter x 50mm wide top rolling wheel and 26, 80, 180, 300mm radius lower dies. This heavy duty machine weighs 125kg and has provisions to be easily secured to a bench or stand. It also can be easily disassembled & ready for transportation in less than five minutes for on site applications.

## Features

- Australian Made
- Heavy duty cast iron
- 700mm throat capacity
- Mild steel capacity 1.2mm
- Copper, Brass & Aluminium capacity 1.6mm
- Top anvil Ø200 x 50mm
- Includes 26, 80, 180, 300mm radius dies
- All dies are heat treated to minimise wear
- Dimensions (W x H x D): 225 x 750 x 850mm
- Machine should be fitted to a bench or stand ideally so the working height is at chest level

## Includes

- 4 Dies (26, 80, 180, 300mm)

Product Brochure For S229

**Specific Features**



Included Dies 26, 80, 180, 300mm



Insert 3



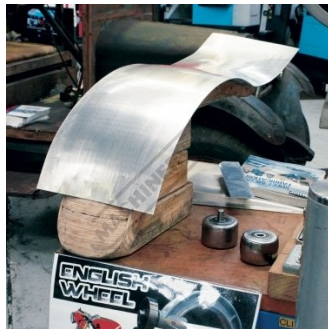
Insert 4



Insert 5



Insert 6



Insert 2

**Recommended Accessories**

S225  
English Wheel



S2262  
Shrinker & Stretcher - Bench Mount



S2263  
Shrinker Stretcher Foot Operated Stand



S2264  
Foot Operated Shrinker Stretcher - Oval Jaws



Product Brochure For S229

**S2266**  
Foot Operated Shrinker  
Stretcher - Heavy Duty



**S227A**  
Pneumatic Planishing Hammer



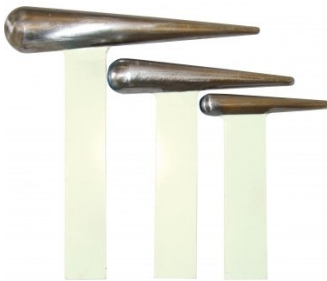
**S223**  
Straight Steel T-Dolly Set Small  
- 5 Piece



**S2231**  
Straight Steel T-Dolly Set Large  
- 2 Piece



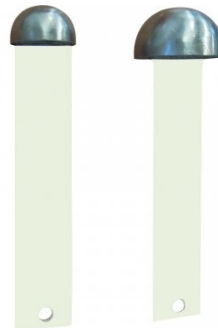
**S2232**  
Tapered Steel T-Dolly Set - 3  
Piece



**S2233**  
Curved Steel Dolly Set - 3 Piece



**S2234**  
Mushroom Steel Dome Dolly Set  
- 2 Piece



**S2235**  
Mushroom Steel Dome Dolly Set  
- 2 Piece



**S2236**  
Oval Steel Dolly



**S2237**  
Bowl Steel Dome Dolly



**S2239**  
Dolly Stand Holder



**S2238**  
Steel Dolly Stand



Product Brochure For S229

---

S214

Rectangle Leather Bag - Steel Shot Filled



S212

Rectangle Leather Bags - Sand Filled



S210

Round Leather Bags - Sand Filled



H885

Auto Panel Restoration Kit - DIY



H886

Auto Panel Restoration Kit - Professional



H887

Auto Panel Restoration Kit - Master

