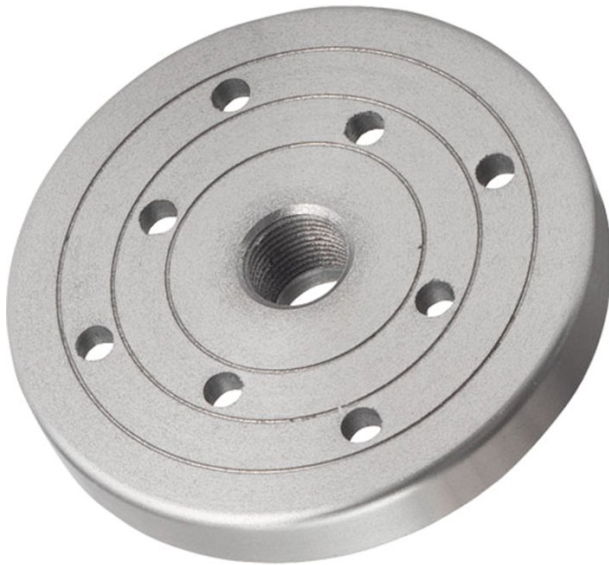


## Product Brochure For R8160

### Face Plate - CWA70

Ø100mm (4")

Suits Stubby Wood Lathe



ORDER CODE:	R8160
MODEL:	CWA70
Type:	Faceplate
No. of Piece:	~
Size:	Ø100mm (4")
Internal Thread:	3/4" x 16TPI
External Thread:	~
Suits:	Wood Lathes

RECORD POWER



#### Description

Record Power CWA70 faceplates are the ideal tool for mounting larger or heavier work, for turning across the grain. This cast iron faceplate is precision machined on external faces to a tolerance of 1/1000th of an inch for each inch of radius and CNC turned for exceptional accuracy and balance. It features concentric circular grooves to aid the centralising of smaller workpieces. A rough guide to a faceplate's capacity is that pieces can be turned up to three times the diameter of the faceplate they are mounted on.

#### Features

- Cast Iron Faceplate
- 100mm (4") Diameter Face Plate
- 3/4" x 16 TPI Thread