

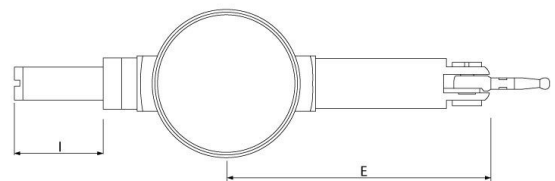
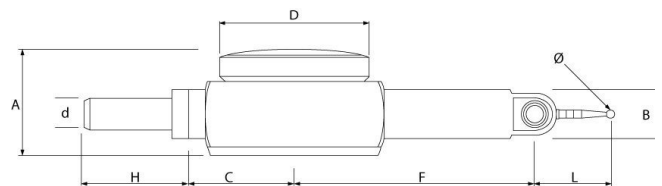
Product Brochure For Q224

## Dial Test Indicator - Metric - 34-224

0 - 0.8mm Micron (Din Accuracy)



ORDER CODE:	Q224
Range:	0 - 0.8mm
Graduations:	0.01mm
A (mm):	20.6
B (mm):	9.5
B1 (mm):	~
C (mm):	20
D (mm):	Ø37.5
d (mm):	8 / 6
E (mm):	~
F (mm):	46
G (mm):	~
H (mm):	20.5
I (mm):	17
J:	~
K (mm):	~
L (mm):	14.8
L1 (mm):	~
Ø (mm):	~



### Description

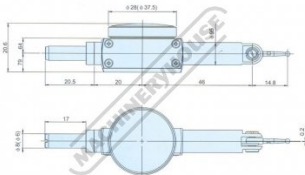
The dial test indicator is ideally suited for all kinds of comparative measurements in the workshop and inspection room. because of its unique design it is suitable for measuring down pockets and holes

### Features

- Large measuring range - Jewel movement
- Reversing Measuring direction
- Adjustable bezel face
- Sealed Bezel to keep out dirt and coolant
- Small round extension for easy access in pockets and holes

## Product Brochure For Q224

### Specific Features



### Diagram Dimensions

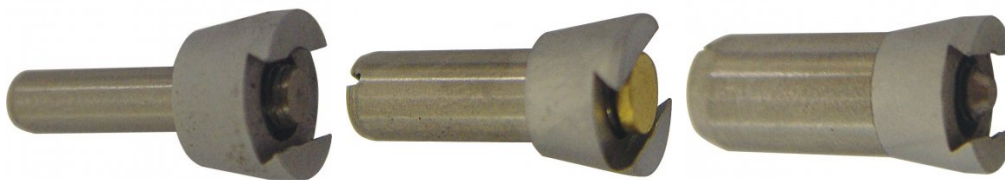
### Recommended Accessories

**Q2182**  
Stem for Dial Test Indicators

**Q2183**  
Stem for Dial Test Indicators

**Q2184**  
Stem for Dial Test Indicators

**M050**  
Magnetic Base - Standard



**M051**  
Magnetic Base - Deluxe - One Lock

**Q430**  
Magnetic Base - Small

**Q435**  
Magnetic Base - Large

**Q4351**  
Magnetic Base - Large



## Product Brochure For Q224

---

Q436

Magnetic Base - One Lock  
(Large)

