

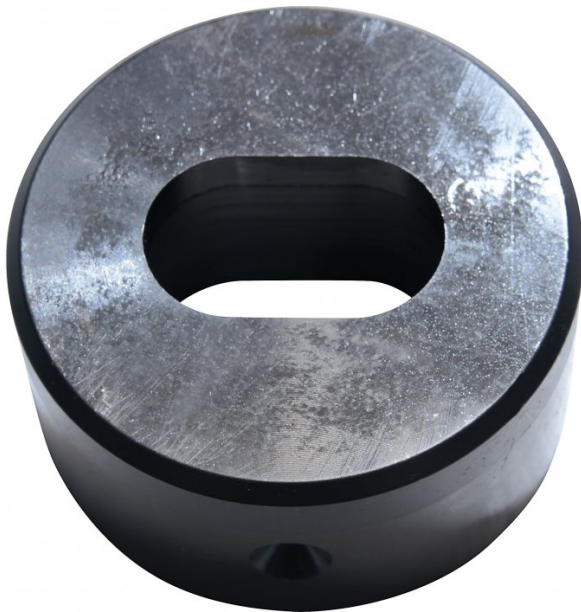
Product Brochure For P6163

19.2 x 31.2mm Slotted Die

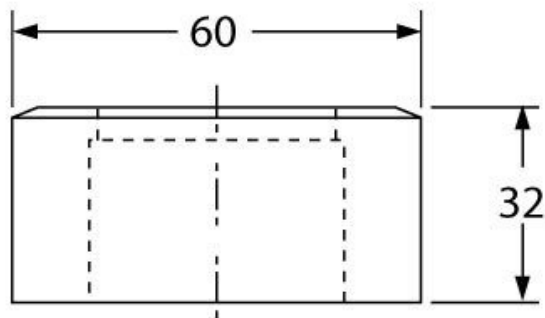
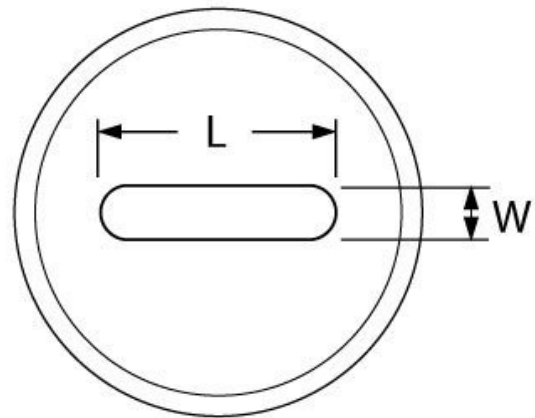
Hi -Grade Tool Steel Imported From Japan
Ø60mm Outside Body Diameter

Back In Stock Soon

Ex GST	Inc GST
\$160.00	\$184.00



ORDER CODE:	P6163
Shape - Type:	Slotted Die - 0D2
Square or Slot Hole Size (W x L) (mm):	19.2 x 31.2
Punch Locating Diameter x Length (mm):	~
Die Outside Body Diameter x Height (mm):	Ø60 x 32mm



Description

Punch and Dies are Manufactured by Sunrise in Taiwan using Hi -Grade Tool Steel imported from Japan. The manufacturing process involves machining via hi tech CNC machines lathes & mills, vacuum heat treatment with multiple tempering at high temperatures before a final quality inspection/testing process all of which ensures an accurate, precise, durable & stable product.

Features

- PLEASE NOTE FOLLOWING RECOMMENDATIONS WHEN SELECTING DIE CLEARANCE:
- Material Thickness - 2 ~ 4mm = Die Clearance 0.2mm
- Material Thickness - 4 ~ 9.5mm = Die Clearance 0.7mm
- Material Thickness - 10 ~ 14.5mm = Die Clearance 1.2mm
- Material Thickness - 15 ~ 19.5mm = Die Clearance 1.7mm
- Material Thickness - 20 ~ 24mm = Die Clearance 2.2mm

Product Brochure For P6163

Specific Features



Bottom View

Recommended Accessories

P6161

18 x 30mm Slotted Punch

