

Product Brochure For P6157

19.2 x 26.2mm Slotted Die

Hi -Grade Tool Steel Imported From Japan
Ø45mm Outside Body Diameter

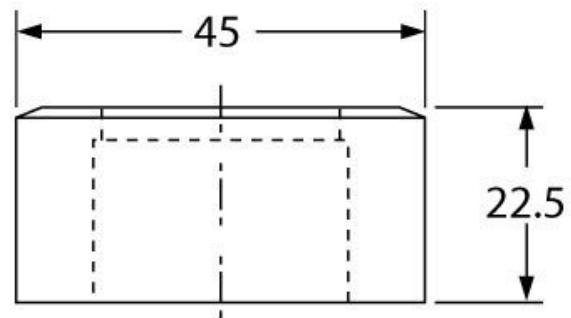
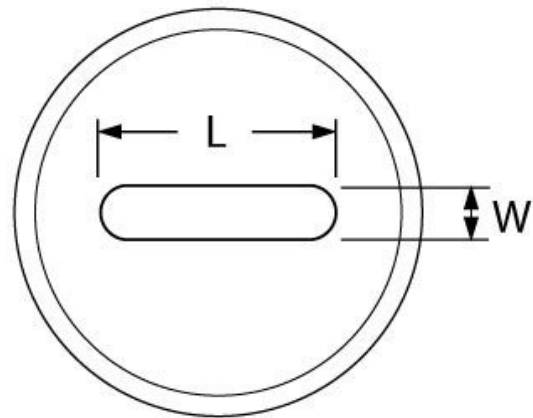


Back In Stock Soon

Ex GST
\$122.00

Inc GST
\$140.30

ORDER CODE:	P6157
Shape - Type:	Slotted Die - 0D1
Square or Slot Hole Size (W x L) (mm):	19.2 x 26.2
Punch Locating Diameter x Length (mm):	~
Die Outside Body Diameter x Height (mm):	Ø45 x 22.5mm



Description

Punch and Dies are Manufactured by Sunrise in Taiwan using Hi -Grade Tool Steel imported from Japan. The manufacturing process involves machining via hi tech CNC machines lathes & mills, vacuum heat treatment with multiple tempering at high temperatures before a final quality inspection/testing process all of which ensures an accurate, precise, durable & stable product.

Features

- PLEASE NOTE FOLLOWING RECOMMENDATIONS WHEN SELECTING DIE CLEARANCE:
- Material Thickness - 2 ~ 4mm = Die Clearance 0.2mm
- Material Thickness - 4 ~ 9.5mm = Die Clearance 0.7mm
- Material Thickness - 10 ~ 14.5mm = Die Clearance 1.2mm
- Material Thickness - 15 ~ 19.5mm = Die Clearance 1.7mm
- Material Thickness - 20 ~ 24mm = Die Clearance 2.2mm

Optional Accessories

- Please Note: Slotted die requires a Die Adaptor Sleeve (PP705) & Spacer Ring (PP0016) to fit on current Sunrise machines

Product Brochure For P6157

Specific Features



Bottom View

Recommended Accessories

P6155
18 x 25mm Slotted Punch



PP705
DIE REDUCING BUSH



PP0016
DIE RING SPACER

