

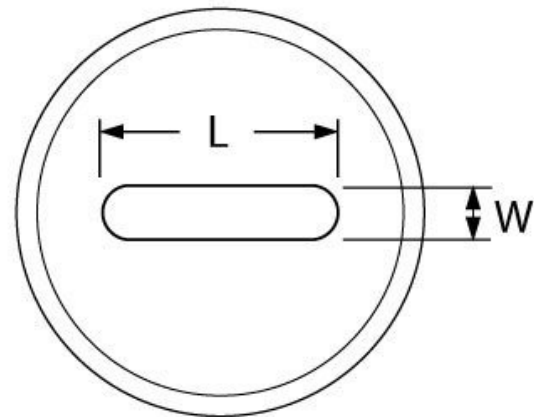
## Product Brochure For P6033

### 11.2 x 26.2mm Slotted Die

Hi -Grade Tool Steel Imported From Japan  
Ø45mm Outside Body Diameter



ORDER CODE:	P6033
Shape - Type:	Slotted Die - 0D1
Square or Slot Hole Size (W x L) (mm):	11.2 x 26.2
Punch Locating Diameter x Length (mm):	~
Die Outside Body Diameter x Height (mm):	Ø45 x 22.5mm



#### Description

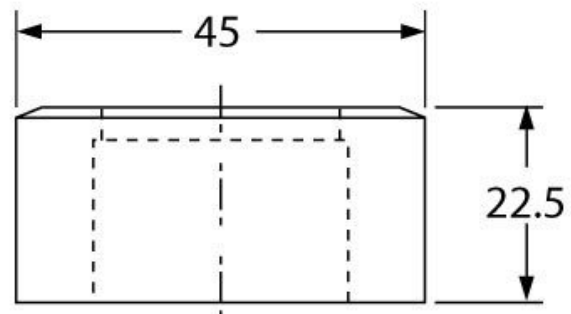
Punch and Dies are Manufactured by Sunrise in Taiwan using Hi -Grade Tool Steel imported from Japan. The manufacturing process involves machining via hi tech CNC machines lathes & mills, vacuum heat treatment with multiple tempering at high temperatures before a final quality inspection/testing process all of which ensures an accurate, precise, durable & stable product.

#### Features

- PLEASE NOTE FOLLOWING RECOMMENDATIONS WHEN SELECTING DIE CLEARANCE:
- Material Thickness - 2 ~ 4mm = Die Clearance 0.2mm
- Material Thickness - 4 ~ 9.5mm = Die Clearance 0.7mm
- Material Thickness - 10 ~ 14.5mm = Die Clearance 1.2mm
- Material Thickness - 15 ~ 19.5mm = Die Clearance 1.7mm
- Material Thickness - 20 ~ 24mm = Die Clearance 2.2mm

#### Optional Accessories

- Please Note: Slotted die requires a Die Adaptor Sleeve (PP705) & Spacer Ring (PP0016) to fit on current Sunrise machines



Product Brochure For P6033

---

**Specific Features**



Bottom View

**Recommended Accessories**

P6031  
10 x 25mm Slotted Punch



PP705  
DIE REDUCING BUSH



PP0016  
DIE RING SPACER

