

Product Brochure For M647

## Opti-Mill Head Attachment - Geared & Tilting Head - BF-20V

Electronic Variable Speeds & Dovetail Column

**Ex GST**  
**\$1,160.00**

**Inc GST**  
**\$1,334.00**



OPTIMUM



ORDER CODE:	M647
MODEL:	BF-20V
Digital Readout:	Optional
Type:	Vertical
Table Size (mm):	~
Column Type:	Dovetail
Spindle Taper - Vertical:	3MT
Spindle Taper - Horizontal:	~
Longitudinal Travel (X-Axis) (mm):	~
Cross Travel (Y-Axis) (mm):	~
Vertical Travel (Z-Axis) (mm):	280
Type of Slides:	Dovetail
Ram Travel (mm):	~
Spindle to Table (mm):	~
Spindle to Base:	~
Spindle Travel / Diameter (mm):	50 / 60
Throat Depth (max.) (mm):	185
Tilting Head (Left ~ Right):	±90°
Tilting Head (Forward ~ Back):	Fixed
Drilling Capacity (mm):	16
End Milling Capacity (mm):	20
Face Milling Capacity (mm):	63
Power Feed - Quill (mm/rev):	~
Power Feed - Longitudinal (X-Axis) (mm/min):	~
Power Feed - Cross (Y-Axis) (mm/min):	~
Power Feed - Vertical (Z-Axis) (mm/min):	~
Table T-Slot Size (inch / mm):	~
Work Table Load Capacity (kg):	~
Spindle Speeds Vertical (No./ rpm):	Variable (90 - 3000)
Spindle Speeds Horizontal (No./ rpm):	~
Spindle Speeds - Universal Head:	~
Motor Power - Vertical Spindle (kW / hp):	0.85 / 1.13
Motor Power - Horizontal Spindle (kW / hp):	~
Motor Power - Universal Head:	~
Voltage / Amperage (V / amp):	240 / 10
Nett Weight (kg):	103

### Description

The BF-20V mill head attachment has more throat & height capacity than the the BF-16AV and allows for larger work to be machined, it also is specifically designed to suit the TU-2506V & TU-3008G Optimum bench lathes; converting them into a universal combination lathe/mill when mounted together. In addition this compact setup has the advantage of that it requires less valuable floor space then the two separate conventional machines.

### Features

- Electronic infinitely variable speed
- 3MT spindle taper
- Dovetail vertical Z-Axis
- Digital readout speed display
- Work light mounted underneath mill head
- Digital depth display with zero reset for quill
- Tilting head to ± 90° from vertical
- 2 speed gearbox (high / low) drive
- Forward and reverse spindle switch

## Product Brochure For M647

- Scale collars for all Axis are adjustable
  - Adjustable dovetail slideway on Z-Axis
  - Adjustable drill length stop
  - Metric dial graduations
- Note: The lathe rear splash tray is required to be removed to fit Mill Head Attachment

### Includes

- 3MT x JT6 drill chuck arbor
- Safety cutter guard
- Bracket kit for optional digital readout
- 1/2" x 12tpi whitworth drawbar

### Specific Features



Quill Handle



Safety Cutter Guard



Digital Read Out For Quill Depth



Control Panel With Variable Speed DRO Display



Quill Feed Adjustment



High Low Geared Head Dial



Inbuilt Work Light

Product Brochure For M647

**Recommended Accessories**

L689  
Opti-Turn Bench Lathe



L691  
Opti-Turn Bench Lathe



Stand Sold Separately

K147  
Opti-Turn Lathe & Mill Drill  
Combination Package Deal



K149  
Opti-Turn Lathe & Mill Drill  
Combination Package Deal



L690  
Lathe Stand



D695  
3-Axis Optimum Digital Readout  
Counter - 1µm



D694  
1500mm Optimum Magnetic  
Digital Readout Scale



D697  
Optimum Magnetic Digital  
Readout Reader Head



Product Brochure For M647

**T773**

Industrial Mobile Tooling Cabinet Workstation



**K150**

Mill-Drill Accessory Package Deal - Imperial Cutters



**K151**

Mill-Drill Accessory Package Deal - Metric Cutters



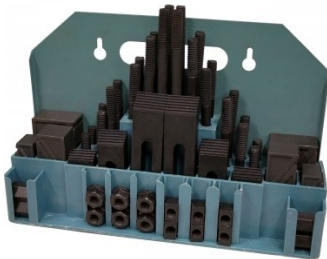
**C922B**

Collet & Chuck Set - 8 Piece



**C0955**

Clamp Kit 58 piece - Workshop Series



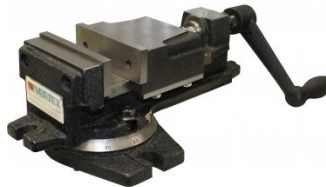
**C926**

Collet & Chuck Set - 20 Piece



**V104**

Vertex K-Type Milling Vice



**M3301**

Metric HSS Slot Drill & End Mill Set - 10 Piece



**M3321**

Imperial HSS Slot Drill & End Mill Set - 10 Piece



**M3281**

14mm HSS End Mill Long Series



**M182**

Precision Boring Head Kit



**M192**

Boring Head Shank



Product Brochure For M647

**M180**  
Boring Bar Set - 9 piece



**M250**  
Parallel Set - 8 Piece



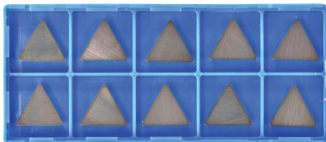
**M530**  
Universal Milling Kit - 4 Piece



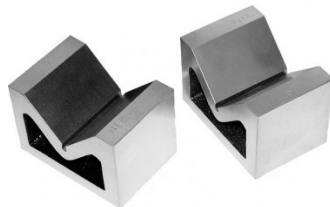
**M528**  
Face Mill 90° - Positive Rake



**L066**  
KYOCERA Carbide Inserts - Milling



**V004**  
Cast Iron Vee Block



**R001**  
Rotary Table



**R0014**  
Tilting Rotary Table



**P235**  
Coolant Pump & Tank



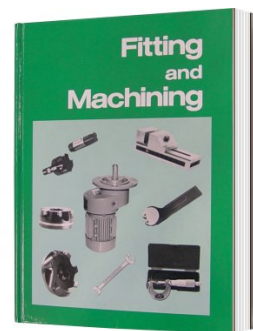
**S090A**  
Soluble Metal Cutting Fluid - 1 Litre



**S090**  
Soluble Metal Cutting Fluid - 5 Litre

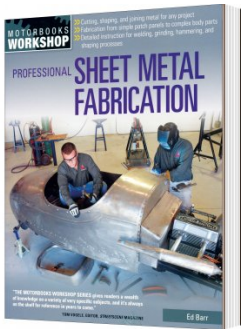


**L341**  
Fitting and Machining Technical Book

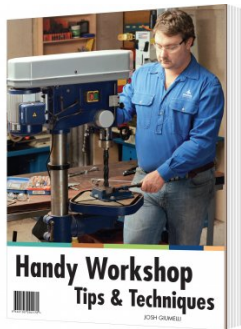


Product Brochure For M647

**L3455**  
Professional Sheet Metal Fabrication Book



**L345**  
Handy Workshop Tips & Techniques - 1st Edition



**L300**  
Magnetic Swarf Remover



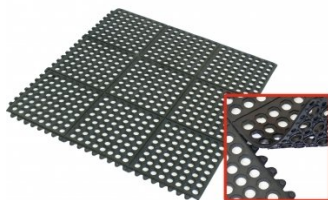
**M9991**  
Magnetic Floor Sweeper



**M800**  
Rubber Mat - Anti-Fatigue



**M805**  
Rubber Mat - Anti-Fatigue



**O043**  
Rust & Corrosion Preventive



**O042**  
General Purpose Lubricant & Corrosion Inhibitor



**O044**  
Rust & Corrosion Preventive

