

## Product Brochure For M629D

# Industrial Turret Milling Machine - BM-65VE

Table Travel: (X) - 925mm (Y) - 420mm (Z) - 480mm

Includes Digital Readout System



ORDER CODE:	M629D
MODEL:	BM-65VE
Digital Readout:	3-Axis Digital Readout
Type:	Vertical
Table Size (mm):	1500 x 300
Column Type:	~
Spindle Taper - Vertical:	NT40
Spindle Taper - Horizontal:	~
Longitudinal Travel (X-Axis) (mm):	925
Cross Travel (Y-Axis) (mm):	420
Vertical Travel (Z-Axis) (mm):	480
Type of Slides:	Dovetail (X), Square (Y & Z)
Ram Travel (mm):	485
Spindle to Table (mm):	530
Spindle to Base:	~
Spindle Travel / Diameter (mm):	155 / 105
Throat Depth (max.) (mm):	735
Tilting Head (Left ~ Right):	±90°
Tilting Head (Forward ~ Back):	±45°
Drilling Capacity (mm):	~
End Milling Capacity (mm):	~
Face Milling Capacity (mm):	~
Power Feed - Quill (mm/rev):	0.04 / 0.08 / 0.13
Power Feed - Longitudinal (X-Axis) (mm/min):	20 - 2000
Power Feed - Cross (Y-Axis) (mm/min):	20 - 2000
Power Feed - Vertical (Z-Axis) (mm/min):	Rapid
Table T-Slot Size (inch / mm):	5/8
Work Table Load Capacity (kg):	450
Spindle Speeds Vertical (No./ rpm):	Variable (60 - 3600)
Spindle Speeds Horizontal (No./ rpm):	~
Spindle Speeds - Universal Head:	~
Motor Power - Vertical Spindle (kW / hp):	3.75 / 5
Motor Power - Horizontal Spindle (kW / hp):	~
Motor Power - Universal Head:	~
Voltage / Amperage (V / amp):	415
Nett Weight (kg):	1750

## Description

Manufactured in Taiwan

## Features

- 3 Axis digital readout fitted
- 5HP 415V motor, dial variable speed system (BM-65VE)
- NT40 Spindle taper with a 105mm chrome & ground quill
- Hardened & ground work table & slide-ways
- Square construction slides for Y & Z-Axis to maximise rigidity
- Turcite B coated X & Y-Axis slide-ways reduces friction for smooth operation
- Pneumatic operation drawbar system for quick and effortless tool change
- Powered elevating motor for Z-Axis
- Meehanite casting for high strength & minimal deformation
- Quality electrics & overload protection in an easy access enclosure
- Horizontal travelling ram mounted on a rotating base allowing repositioning of spindle
- The ram incorporates a tail lug (spigot) to accept a slotting attachment etc.
- High / neutral and low gear selection lever to maximise torque

## Product Brochure For M629D

- Align AL-500S X & Y-Axis power-feed with adjustable micro switch feed stops
- Micro switch on the manual knee handle for additional operator safety
- Metric dial graduations @ 0.02mm for X , Y & Z-Axis
- Automatic quill feed 0.04, 0.08, 0.13mm/rev
- Automatic cut off depth stop on quill
- Automatic oil lubrication pump and reservoir
- Slide-way covers Y & Z-Axis
- Mill head tilts to  $\pm 45^\circ$  forward and back
- Mill head tilts to  $\pm 90^\circ$  left and right
- Manual quick action quill lever
- Mechanical spindle brake
- Tool box and manual

### Includes

- 3 Axis digital readout fitted
- Automatic oil lubrication pump and reservoir
- Pneumatic drawbar system M16 thread
- Coolant system
- Slideway covers
- Z axis powered elevating motor
- X & Y-Axis power-feed
- Halogen light
- Safety cutter guard
- Swarf tray

### Specific Features



Y Axis Feed



Micro Switch on Knee Handle



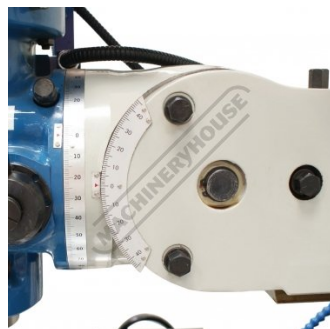
Mill Head Front View



Mill Head Right View



Pneumatic Drawbar



Universal Tilting and Rotating Head



Adjustable Swivel & Sliding Ram

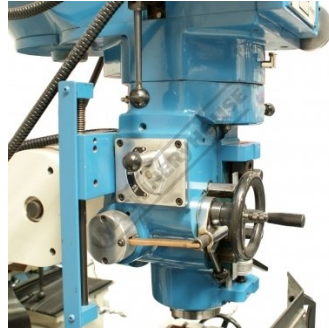


X Axis Power Feed

Product Brochure For M629D



Metric dial graduations for X Y & Z Axis



Quill Feed Mechanism



Automatic Oil Lubrication Pump and Reservoir



Control Panel



3 Axis Digital Readout



Feed Selector



Variable Speed Range 60 3600rpm



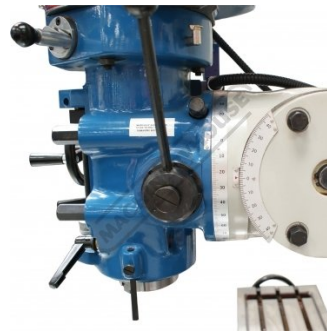
Forward Reverse Switch



Quill Feed Engagement Lever



Quill Feed Depth Stop



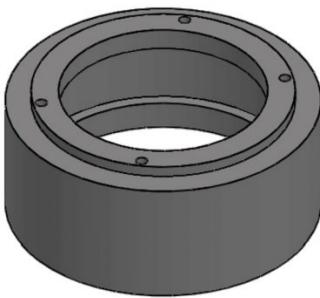
Head Side View

Product Brochure For M629D

**Recommended Accessories**

**M223**

Riser Spacer - Suits Turret Milling Machines



**C091**

Clamp Kit 58 piece - Workshop Series



**C966**

Collet & Chuck Set - 25 Piece



**M3301**

Metric HSS Slot Drill & End Mill Set - 10 Piece



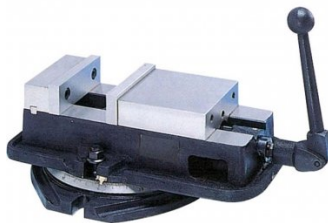
**M3321**

Imperial HSS Slot Drill & End Mill Set - 10 Piece



**V306**

Vertex Anglock Machine Vice



**M184**

Precision Boring Head



**M185**

Precision Universal Facing & Boring Head



Product Brochure For M629D

**M197A**  
Boring Head Shank



**M181**  
Boring Bar Set - 12 piece



**M181A**  
Boring Bar Set - 4 piece



**C294**  
Industrial Drill Chuck - Keyless Type



**D448**  
NT40 x JT3 Drill Chuck Arbor -  
M16 Threaded Shank



**M252**  
Parallel Set - 18 Piece



**R008**  
Vertex Rotary Table



**R010**  
Vertex Rotary Table



**D002**  
Vertex Dividing Head - Semi  
Universal



**C2806**  
3 Jaw Self Centring Lathe  
Chuck



**R002**  
Vertex Super Indexing Head



**M512**  
Face Mill 90° - Positive Rake



Product Brochure For M629D

**M503**  
Face Mill 90° - Positive Rake



**M517**  
Face Mill 45° - Super High-Rake



**M518**  
Face Mill 45° - Super High-Rake



**L065**  
KYOCERA Carbide Inserts - Milling



**L066**  
KYOCERA Carbide Inserts - Milling



**M552**  
Face Mill Arbor



**M554**  
Face Mill Arbor



**M555**  
Face Mill Arbor



**M250**  
Parallel Set - 8 Piece



**L059**  
Carbide Inserts - Milling



**S090A**  
Soluble Metal Cutting Fluid - 1 Litre



**S090**  
Soluble Metal Cutting Fluid - 5 Litre



Product Brochure For M629D

**S076**  
Cutting Tool Lubricant Fluid - 500ml



**S077**  
Drilling, Tapping & Cutting Tool Lubricant Spray - 400g



**S074**  
Cutting Tool Lubricant Paste - 500g



**M247**  
Air Power Drawbar



**M229**  
Power Feed Unit



**M2295**  
Power Feed Unit



**L300**  
Magnetic Swarf Remover



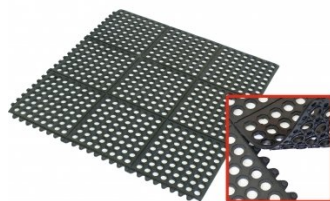
**M9991**  
Magnetic Floor Sweeper



**M800**  
Rubber Mat - Anti-Fatigue



**M805**  
Rubber Mat - Anti-Fatigue



**O043**  
Rust & Corrosion Preventive



**O042**  
General Purpose Lubricant & Corrosion Inhibitor



## Product Brochure For M629D

---

O044

Rust & Corrosion Preventive

