

## Product Brochure For M596D

# Industrial Turret Milling Machine - BM-52VE

Table Travel: (X) - 860mm (Y) - 425mm (Z) - 400mm

Includes Digital Readout System



|  |                              |
|--|------------------------------|
| ORDER CODE:                                  | M596D                        |
| MODEL:                                       | BM-52VE                      |
| Digital Readout:                             | 3-Axis Digital Readout       |
| Type:  | Vertical                     |
| Table Size (mm):                             | 1370 x 254                   |
| Column Type:                                 | ~                            |
| Spindle Taper - Vertical:                    | NT40                         |
| Spindle Taper - Horizontal:                  | ~                            |
| Longitudinal Travel (X-Axis) (mm):           | 860                          |
| Cross Travel (Y-Axis) (mm):                  | 425                          |
| Vertical Travel (Z-Axis) (mm):               | 400                          |
| Type of Slides:                              | Dovetail (X), Square (Y & Z) |
| Ram Travel (mm):                             | 470                          |
| Spindle to Table (mm):                       | 440                          |
| Spindle to Base:                             | ~                            |
| Spindle Travel / Diameter (mm):              | 127 / 86                     |
| Throat Depth (max.) (mm):                    | 609                          |
| Tilting Head (Left ~ Right):                 | ±90°                         |
| Tilting Head (Forward ~ Back):               | ±45°                         |
| Drilling Capacity (mm):                      | ~                            |
| End Milling Capacity (mm):                   | ~                            |
| Face Milling Capacity (mm):                  | ~                            |
| Power Feed - Quill (mm/rev):                 | 0.038 / 0.076 / 0.152        |
| Power Feed - Longitudinal (X-Axis) (mm/min): | 20 - 2000                    |
| Power Feed - Cross (Y-Axis) (mm/min):        | 20 - 2000                    |
| Power Feed - Vertical (Z-Axis) (mm/min):     | Rapid                        |
| Table T-Slot Size (inch / mm):               | 16                           |
| Work Table Load Capacity (kg):               | 350                          |
| Spindle Speeds Vertical (No./ rpm):          | Variable (50 - 3650)         |
| Spindle Speeds Horizontal (No./ rpm):        | ~                            |
| Spindle Speeds - Universal Head:             | ~                            |
| Motor Power - Vertical Spindle (kW / hp):    | 3.75 / 5                     |
| Motor Power - Horizontal Spindle (kW / hp):  | ~                            |
| Motor Power - Universal Head:                | ~                            |
| Voltage / Amperage (V / amp):                | 415                          |
| Nett Weight (kg):                            | 1130                         |

## Description

Quality product representing excellent value

## Features

- 3 Axis digital readout fitted
- 5HP 415V motor with mechanical variable speed system
- NT40 Spindle taper with a chrome & ground quill
- Hardened & ground work table & slide-ways
- Square construction slides for Y & Z-Axis to maximise rigidity
- Turcite B coated X & Y Axis slide-ways reduces friction for smooth operation
- Meehanite casting for high strength & minimal deformation
- Quality electrics & overload protection in an easy access enclosure
- Horizontal travelling ram mounted on a rotating base allowing repositioning of spindle
- The ram incorporates a tail lug (spigot) to accept a slotting attachment etc.
- High / neutral and low gear selection lever to maximise torque
- X & Y-Axis power-feed with adjustable micro switch feed stops
- Powered elevating motor for Z-Axis

## Product Brochure For M596D

- Micro switch on the manual knee handle for additional operator safety
- Metric dial graduations @ 0.02mm for X , Y & Z-Axis
- Automatic quill feed 0.038, 0.076, 0.152mm/rev
- Automatic cut off depth stop on quill
- Oil lubrication pump and reservoir
- Slide-way covers Y & Z-Axis
- Mill head tilts to  $\pm 45^\circ$  forward and back
- Mill head tilts to  $\pm 90^\circ$  left and right
- Manual quick action quill lever
- Mechanical spindle brake
- Tool box and manual

### Includes

- 3 Axis digital readout fitted
- One-shot oil lubrication pump and reservoir
- Drawbar M16 thread
- Coolant system
- Slideway covers
- X-Axis power-feed
- Y-Axis power-feed
- Z-Axis powered elevating motor
- LED work light
- Safety cutter guard
- Swarf tray

### Specific Features



Control Panel



Safety Milling Guard



Head Right View



Head Left View



Universal Tilting and Rotating Head



Adjustable Swivel and Sliding Ram



Tail Lug Spigot Supports Slotting Head



X Axis Power Feed with Rapid

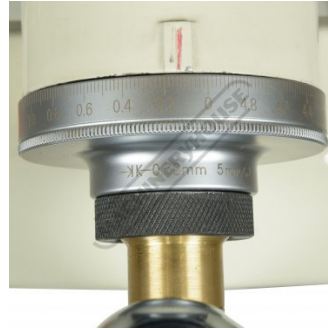
Product Brochure For M596D



X Axis Dial



Y Axis Power Feed with Rapid



Y Axis Dial



Z Axis Dial



Z Axis Rapid Motor



Lubrication Pump



Work Light and Coolant Hose



Machine Vice



Clamp Kit



Left View

Product Brochure For M596D

**Recommended Accessories**

C0966

Clamp Kit 58 piece - Workshop Series



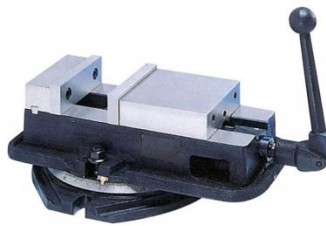
V106

Vertex K-Type Milling Vice



V306

Vertex Anglock Machine Vice



C929

Collet & Chuck Set - 20 Piece



C966

Collet & Chuck Set - 25 Piece



M350

10pc Metric HSS Milling Cutter Set 4-10mm



M360

10pc Metric HSS Milling Cutter Set 10-20mm



M184

Precision Boring Head



Product Brochure For M596D

**M185**  
Precision Universal Facing & Boring Head



**M197A**  
Boring Head Shank



**M181**  
Boring Bar Set - 12 piece



**M181A**  
Boring Bar Set - 4 piece



**C292**  
Industrial Drill Chuck - Keyless Type



**D446**  
NT40 x JT6 Drill Chuck Arbor - M16 Threaded Shank



**C294**  
Industrial Drill Chuck - Keyless Type



**D448**  
NT40 x JT3 Drill Chuck Arbor - M16 Threaded Shank



**M260**  
Precision Metric 1-2-3 Block Set



**M250**  
Parallel Set - 8 Piece



**M252**  
Parallel Set - 18 Piece



**R008**  
Vertex Rotary Table



Product Brochure For M596D

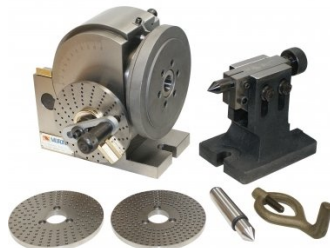
R010

Vertex Rotary Table



D002

Vertex Dividing Head - Semi Universal



C2806

3 Jaw Self Centring Lathe Chuck



R002

Vertex Super Indexing Head



M512

Face Mill 90° - Positive Rake



M503

Face Mill 90° - Positive Rake



M517

Face Mill 45° - Super High-Rake



M518

Face Mill 45° - Super High-Rake



L065

KYOCERA Carbide Inserts - Milling



L066

KYOCERA Carbide Inserts - Milling



M552

Face Mill Arbor



M554

Face Mill Arbor



Product Brochure For M596D

**M555**  
Face Mill Arbor



**L059**  
Carbide Inserts - Milling



**S090A**  
Soluble Metal Cutting Fluid - 1 Litre



**S090**  
Soluble Metal Cutting Fluid - 5 Litre



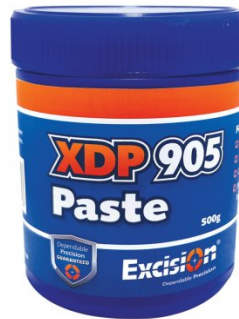
**S076**  
Cutting Tool Lubricant Fluid - 500ml



**S077**  
Drilling, Tapping & Cutting Tool Lubricant Spray - 400g



**S074**  
Cutting Tool Lubricant Paste - 500g



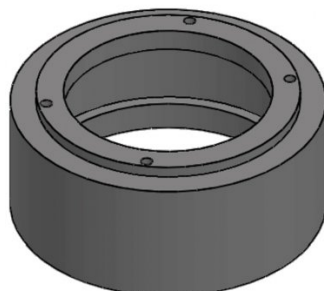
**M229**  
Power Feed Unit



**M2295**  
Power Feed Unit



**M224**  
Riser Spacer - Suits Turret Milling Machines



**L300**  
Magnetic Swarf Remover



**M9991**  
Magnetic Floor Sweeper



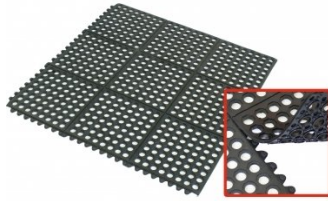
Product Brochure For M596D

---

**M800**  
Rubber Mat - Anti-Fatigue



**M805**  
Rubber Mat - Anti-Fatigue



**O043**  
Rust & Corrosion Preventive



**O042**  
General Purpose Lubricant & Corrosion Inhibitor



**O044**  
Rust & Corrosion Preventive

