

Product Brochure For M576

Turret Milling Machine - HM-51

Table Travel: (X) - 600mm (Y) - 220mm (Z) - 310mm

Includes Digital Readout System, Vice & Collet Chuck System



ORDER CODE:	M576
MODEL:	HM-51
Digital Readout:	3-Axis Digital Readout
Type:	Vertical
Table Size (mm):	1000 x 240
Column Type:	~
Spindle Taper - Vertical:	NT30
Spindle Taper - Horizontal:	~
Longitudinal Travel (X-Axis) (mm):	600*
Cross Travel (Y-Axis) (mm):	220*
Vertical Travel (Z-Axis) (mm):	310
Type of Slides:	Dovetail
Ram Travel (mm):	350
Spindle to Table (mm):	415
Spindle to Base:	~
Spindle Travel / Diameter (mm):	120 / 90
Throat Depth (max.) (mm):	550
Tilting Head (Left ~ Right):	±90°
Tilting Head (Forward ~ Back):	Fixed
Drilling Capacity (mm):	30
End Milling Capacity (mm):	25
Face Milling Capacity (mm):	80
Power Feed - Quill (mm/rev):	Manual
Power Feed - Longitudinal (X-Axis) (mm/min):	20 - 2000
Power Feed - Cross (Y-Axis) (mm/min):	Optional *
Power Feed - Vertical (Z-Axis) (mm/min):	Optional *
Table T-Slot Size (inch / mm):	14
Work Table Load Capacity (kg):	175
Spindle Speeds Vertical (No./ rpm):	9 (220 - 2400)
Spindle Speeds Horizontal (No./ rpm):	~
Spindle Speeds - Universal Head:	~
Motor Power - Vertical Spindle (kW / hp):	1.5 / 2
Motor Power - Horizontal Spindle (kW / hp):	~
Motor Power - Universal Head:	~
Voltage / Amperage (V / amp):	240 / 10
Nett Weight (kg):	850

Description

A well-built entry level turret milling / drilling machine with a powerful continuous-load 1.5kW / 2hp motor, intended for trade use. The work table is precision made with adjustable dovetail guides and is recognised for its 600mm X axis by 220mm Y axis travel. There is a three armed handle on the side for drilling also incorporating a fine feed control hand wheel on the front for milling. The screwed belt guard covers on each side of the head offer secure safety whilst providing easy access to the belts and pulleys for speed changing.

Other features include 3 axis digital readout system, taper roller bearing support for the spindle, easy-to-read drilling depth stop, low voltage work light, 160mm machine vice, 8 piece metric collet chuck set, coolant system, X axis power feed unit, drill chuck, 2 & 3 morse taper adaptors. The combination of generous sized vertical support and rugged cast iron construction throughout reduces vibration and guarantees accurate and chatter-free operation.

Features

- 3 Axis digital readout system
- Mill head tilts to ±90° left to right
- 300mm horizontally sliding and rotating ram
- NT30 vertical spindle is hardened and ground
- Precision-ground dovetail slide-ways and table
- Precision milling table incorporating machined T-slots

Product Brochure For M576

- Rear concertina slide-way cover
 - Forward and reverse on/off switch
 - Fine hand wheel operated quill feed
 - Swarf & splash tray
 - Spindle lock for quill
 - Metric dial graduations @ 0.02mm for X , Y & Z-Axis
 - Vertical quill hand-wheel dial graduations @ 0.05mm
 - All slides utilise dovetail construction for maximum rigidity
- * Note: X & Y travels maybe reduced due to digital readout scales and safety stops
 - * Note: Optional Y & Z power feeds require additional parts & fitting (not included)

Includes

- 3 Axis digital readout system
- X-Axis power feed
- Safety cutter guard
- Swarf tray
- Coolant system
- Halogen lamp
- 160mm machine vice
- Drill chuck & arbor
- 2 & 3MT adaptors
- Boring bar arbor
- 8-piece metric collet chuck set (3-26mm)

Specific Features



Left View



3 Axis Digital Readout with Holder



3 Axis Digital Readout



Head Controls



Head with Drawbar



Rotating Head

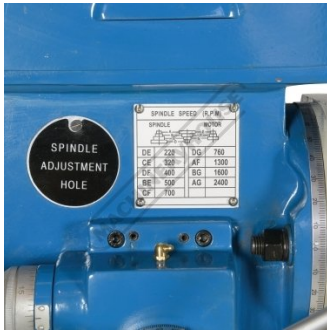


Adjustable Swivel and Sliding Ram



Control Panel

Product Brochure For M576



Spindle Speed Chart



Safety Cutter Guard



30NT Spindle with Lock Handle



Table with Coolant Drain Hose



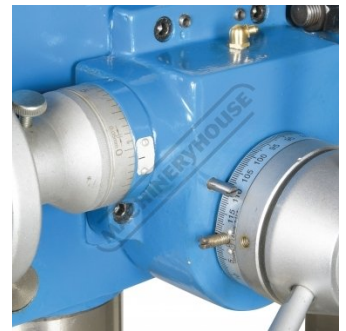
Side View



Concertina Slideway Cover



Quill Hand Wheels



Quill Hand Wheels Dials



Swivel Machine Vice



Table



Table Feed Limit Switch



Work Light and Coolant Hose



Coolant Pump



X Axis Power Feed with Rapid



X Axis Dial - Power Feed Side



X Axis Dial

Product Brochure For M576



Y Axis Dial



Z Axis Handle



Z Axis Dial



Included Accessories

Recommended Accessories

V106

Vertex K-Type Milling Vice



C0965

Clamp Kit 58 piece - Workshop Series



C9245

Collet & Chuck Set - 8 Piece



C928

Collet & Chuck Set - 20 Piece



M3301

Metric HSS Slot Drill & End Mill Set - 10 Piece



M3321

Imperial HSS Slot Drill & End Mill Set - 10 Piece



M530

Universal Milling Kit - 4 Piece



M540

Face Mill Arbor



Product Brochure For M576

R004
Vertex Super Indexing Head



R006
Vertex Rotary Table



M184
Precision Boring Head



M197
Boring Head Shank



M182
Precision Boring Head Kit



M183
Precision Boring Head Kit



M193
Boring Head Shank



M250
Parallel Set - 8 Piece



M252
Parallel Set - 18 Piece



M243
Angle Plate - Precision Ground



M242
Angle Plate - Precision Ground

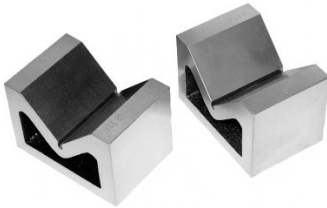


V010
Alloy Steel Vee Block



Product Brochure For M576

V006
Cast Iron Vee Block



S090A
Soluble Metal Cutting Fluid - 1 Litre



S090
Soluble Metal Cutting Fluid - 5 Litre



S076
Cutting Tool Lubricant Fluid - 500ml



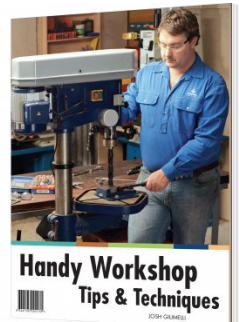
S077
Drilling, Tapping & Cutting Tool Lubricant Spray - 400g



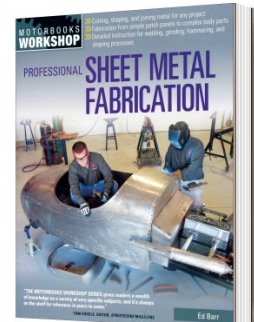
S074
Cutting Tool Lubricant Paste - 500g



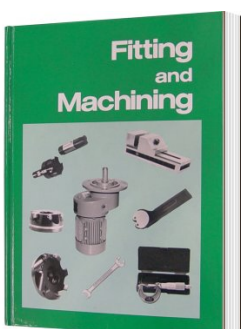
L345
Handy Workshop Tips & Techniques - 1st Edition



L3455
Professional Sheet Metal Fabrication Book



L341
Fitting and Machining Technical Book



L300
Magnetic Swarf Remover



M9991
Magnetic Floor Sweeper

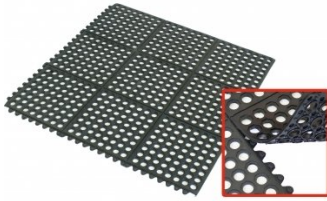


M800
Rubber Mat - Anti-Fatigue



Product Brochure For M576

M805
Rubber Mat - Anti-Fatigue



O043
Rust & Corrosion Preventive



O042
General Purpose Lubricant & Corrosion Inhibitor



O044
Rust & Corrosion Preventive

