

## Product Brochure For M502

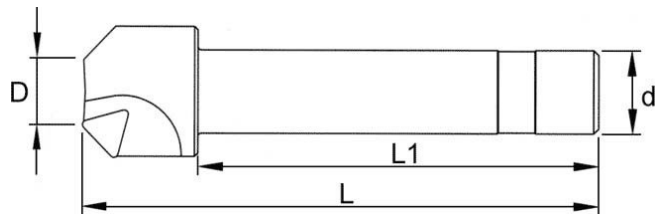
### Chamfer Cutter

Ø20 - Ø35mm Range  
InsertS tip not included

**Ex GST**  
**\$98.00**

**Inc GST**  
**\$112.70**

ORDER CODE:	M502
Range (mm):	20 - 35
d (mm):	25
D (mm):	20
L (mm):	156
L1 (mm):	120
Number of Inserts (No.):	3
Suits Cutters:	TPMN1603 (L066)



#### Description

NOTE: Inserts not included  
Use insert TPMN1603 (L066)

#### Features

- 45° high speed chamfer cutter.

Product Brochure For M502

---

**Recommended Accessories**

L066  
KYOCERA Carbide Inserts -  
Milling

ML091  
Cutter Part - Screw

ML092  
Cutter Part - Insert Clamp

