

Product Brochure For M1834

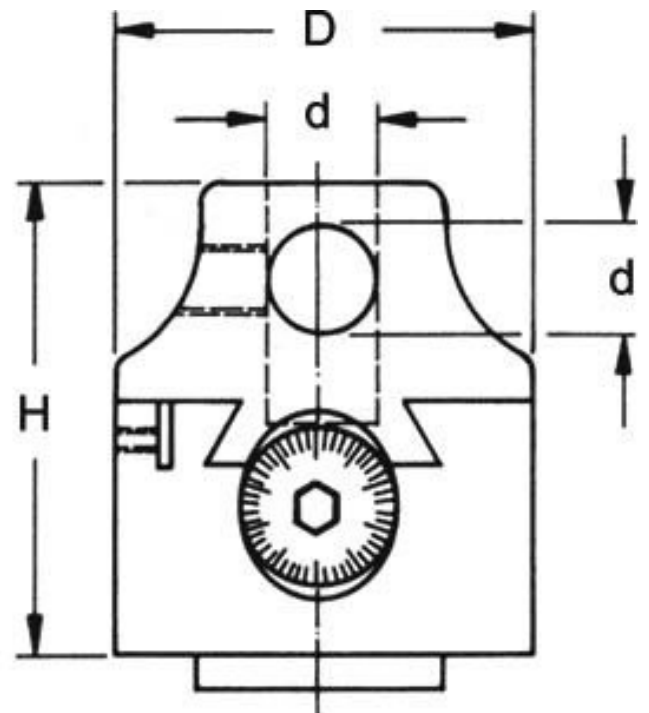
Precision Boring Head - BC-4

Ø100mm Head

Requires Spindle Arbor To Suit Machine



ORDER CODE:	M1834
MODEL:	BC-4
Type:	Boring
D (mm):	100
H (mm):	88
d (lowercase) (mm):	25
W (mm):	~
h (lowercase) (mm):	~
Cross Hole Diameter (mm):	~
Centre Distance Between Holes (mm):	32
Micro Adjustment Travel (mm):	25
Nett Weight (kg):	4



Description

Sturdy boring head suitable for roughing & finishing work. The 100mm head uses the same arbors as the 50 and 75mm heads and makes for an easy and cost efficient addition to the workshop.

Fitted with 2 vertical and one cross hole for the boring bars. The boring head allows the boring bar to be adjusted at a right angle to the spindle axis. This feature makes it possible to position the boring cutter accurately to bore holes of varying diameters. The adjusting screw is hardened & ground and is a non reflecting satin chrome. The reading dial allows for adjustments of 0.01mm on the tool slide and is a direct reading.

Features

- Wide range of boring diameters and depths
- Calibrated micro adjusting screw via a hexagon key.
- 1-1/2" x 18TPI threaded body to mount optional arbors
- Accepts 25mm diameter boring bars
- Includes storage case for protection

Product Brochure For M1834

Specific Features



Close up

Recommended Accessories

M192

Boring Head Shank



M190

Boring Head Shank



M193

Boring Head Shank



M194

Boring Head Shank



L416

Right Hand Boring Bar



L024

Right Hand Boring Bar



L053

KYOCERA Carbide Inserts - Turning



L0534

KYOCERA Carbide Inserts - Turning



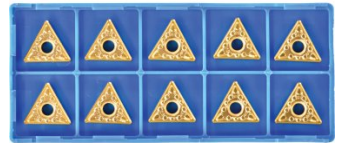
Product Brochure For M1834

L0538
KYOCERA Carbide Inserts -
Turning

L0644
KYOCERA Carbide Inserts -
Turning

L064
KYOCERA Carbide Inserts -
Turning

L0648
KYOCERA Carbide Inserts -
Turning



L063
KYOCERA Carbide Inserts -
Turning

