

Product Brochure For M1822

Precision Boring Head - BC-2

Ø50mm Head

Requires Spindle Arbor To Suit Machine



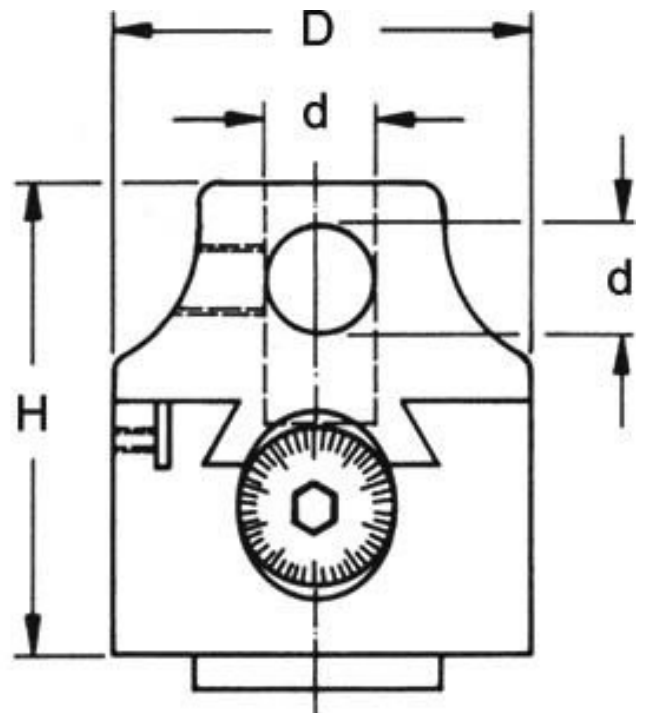
Description

Sturdy boring head suitable for roughing & finishing work. Fitted with 2 vertical and one cross hole for the boring bars. The boring head allows the boring bar to be adjusted at a right angle to the spindle axis. This feature makes it possible to position the boring cutter accurately to bore holes of varying diameters. The adjusting screw is hardened & ground and is a non reflecting satin chrome. The reading dial allows for adjustments of 0.01mm on the tool slide and is a direct reading.

Features

- Wide range of boring diameters and depths
- Calibrated micro adjusting screw via a hexagon key.
- 1-1/2" x 18TPI threaded body to mount optional arbors
- Accepts 12mm diameter boring bars
- Includes storage case for protection

ORDER CODE:	M1822
MODEL:	BC-2
Type:	Boring
D (mm):	50
H (mm):	62
d (lowercase) (mm):	12
W (mm):	~
h (lowercase) (mm):	~
Cross Hole Diameter (mm):	~
Centre Distance Between Holes (mm):	15
Micro Adjustment Travel (mm):	15
Nett Weight (kg):	1.5



Product Brochure For M1822

Recommended Accessories

M180
Boring Bar Set - 9 piece



M192
Boring Head Shank



M190
Boring Head Shank



M193
Boring Head Shank



M194
Boring Head Shank

