

## Product Brochure For M161

# Workshop Turret Milling Machine Horizontal - Vertical - HM-52

Table Travel: (X) - 600mm (Y) - 200mm (Z) - 340mm



Shown with Optional Vice



ORDER CODE:	M161
MODEL:	HM-52
Digital Readout:	Optional
Type:	Vertical & Horizontal
Table Size (mm):	1000 x 240
Column Type:	~
Spindle Taper - Vertical:	NT30
Spindle Taper - Horizontal:	NT30
Longitudinal Travel (X-Axis) (mm):	600
Cross Travel (Y-Axis) (mm):	200
Vertical Travel (Z-Axis) (mm):	340
Type of Slides:	Dovetail
Ram Travel (mm):	500
Spindle to Table (mm):	375
Spindle to Base:	~
Spindle Travel / Diameter (mm):	125 / 90
Throat Depth (max.) (mm):	640
Tilting Head (Left ~ Right):	±90°
Tilting Head (Forward ~ Back):	Fixed
Drilling Capacity (mm):	~
End Milling Capacity (mm):	~
Face Milling Capacity (mm):	~
Power Feed - Quill (mm/rev):	Manual
Power Feed - Longitudinal (X-Axis) (mm/min):	20 - 2000
Power Feed - Cross (Y-Axis) (mm/min):	Optional *
Power Feed - Vertical (Z-Axis) (mm/min):	Optional *
Table T-Slot Size (inch / mm):	14
Work Table Load Capacity (kg):	175
Spindle Speeds Vertical (No./ rpm):	9 (220 - 2400)
Spindle Speeds Horizontal (No./ rpm):	9 (60 - 1350)
Spindle Speeds - Universal Head:	~
Motor Power - Vertical Spindle (kW / hp):	1.5 / 2
Motor Power - Horizontal Spindle (kW / hp):	1.5 / 2
Motor Power - Universal Head:	~
Voltage / Amperage (V / amp):	240 / 10
Nett Weight (kg):	1050

## Description

A well-built entry level turret milling vertical and horizontal, drilling machine with a powerful continuous-load 1.5kW motor, intended for trade use. The work table is precision made with adjustable dovetail guides and is recognised for its 600mm X axis by 200mm Y axis travel. There is a three armed handle on the side for drilling also incorporating a fine feed control hand wheel on the front for milling. The screwed belt guard covers on each side of the head offer secure safety whilst providing easy access to the belts and pulleys for speed changing.

Other features include taper roller bearing support for the spindle, easy-to-read drilling depth stop, low voltage work light, 8 piece metric collet chuck set, coolant system, X axis power feed unit, drill chuck, 2 & 3 morse taper adaptors. The combination of generous sized vertical support and rugged cast iron construction throughout reduces vibration and guarantees accurate and chatter-free operation.

### Extra Features:

- Swivel Table
- 2 Arbors for the Horizontal spindle

## Features

- Swivel table & two arbors for the Horizontal spindle
- Mill head tilts to ±90° left to right.
- 500mm horizontally sliding and rotating ram
- NT30 Horizontal and vertical spindles that are hardened and ground

## Product Brochure For M161

- Precision-ground dovetail slide-ways and table
  - Precision milling table incorporating machined T slots
  - Rear concertina slide-way cover
  - Forward and reverse on/off switch
  - Fine handwheel operated quill feed
  - Swarf & splash tray
  - Spindle lock for quill
  - Metric dial graduations @ 0.02mm for X , Y & Z-Axis
  - Vertical dial graduations on hand wheel @ 0.05mm
  - All slides utilise dovetail construction for maximum rigidity
- \* Note: X & Y travels maybe reduced due to safety stops
  - \* Note: Optional Y & Z power feeds require additional parts & fitting (not included)

### Includes

- X-Axis power feed
- Safety cutter guard
- Swarf tray
- Coolant system
- Halogen lamp
- Drill chuck & arbor
- 2 & 3MT adaptors
- 8-piece metric collet chuck set (4-16mm)

### Specific Features



Quill Feed Handle and Fine Feed Dial



Horizontal Spindle



X Axis Power Feed with Rapid

HORIZONTAL VERTICAL MILLING MACHINE 30INT-240V	
MODEL	HMS2
DRILLING	30 mm
MILLING	25 mm
MOTOR	1.5 KW
SERIAL NO	
DATE	
ACN 059 717 668	
SPINDLE SPEED (R.P.M)	
	
DE 220	DG 760
CE 320	AF 1300
DF 400	BG 1600
BE 500	AG 2400
CF 700	

Spindle Speed Chart



Tilting Head Scale



Adjustable Swivel & Sliding Ram



Concertina Slide Way Cover



Swivel Table & Feed Limit Switches

Product Brochure For M161

HORIZONTAL SPINDLE SPEED (R.P.M)		
1	AG	60
2	BG	140
3	CG	175
4	AF	200
5	AE	240
6	BF	460
7	CE	690
8	BD	1090
9	CD	1350

Horizontal Speed Spindle Chart



Vertical Spindle Switch



Knee Feed Handle



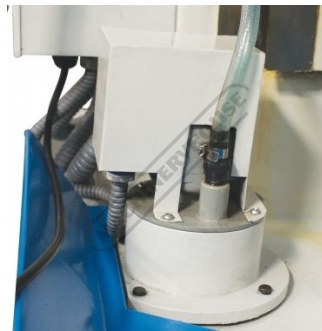
Horizontal Spindle Support



Halogen Light



Horizontal Spindle Switch



Coolant Pump



Accessories Included, Metric Collet Chuck, Drill Chuck & Arbor, Morse Taper Adaptors

**Recommended Accessories**

M229  
Power Feed Unit



L300  
Magnetic Swarf Remover



M9991  
Magnetic Floor Sweeper

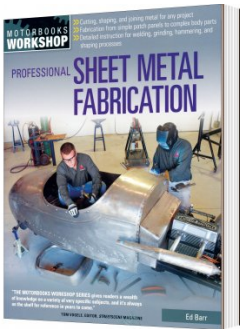


L345  
Handy Workshop Tips & Techniques - 1st Edition

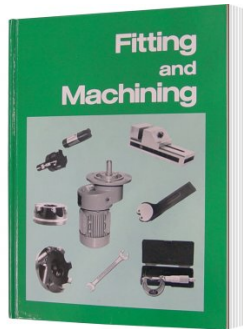


Product Brochure For M161

**L3455**  
Professional Sheet Metal Fabrication Book



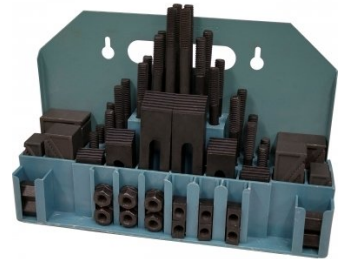
**L341**  
Fitting and Machining Technical Book



**V106**  
Vertex K-Type Milling Vice



**C0965**  
Clamp Kit 58 piece - Workshop Series



**M540**  
Face Mill Arbor



**M530**  
Universal Milling Kit - 4 Piece



**M333**  
Metric HSS Slot Drill & End Mill Set - 12 Piece



**M335**  
Imperial HSS Slot Drill & End Mill Set - 12 Piece



**R004**  
Vertex Super Indexing Head



**R006**  
Vertex Rotary Table



**M242**  
Angle Plate - Precision Ground



**M243**  
Angle Plate - Precision Ground



Product Brochure For M161

**M182**  
Precision Boring Head Kit



**M183**  
Precision Boring Head Kit



**M184**  
Precision Boring Head



**M193**  
Boring Head Shank



**M197**  
Boring Head Shank



**M250**  
Parallel Set - 8 Piece



**M252**  
Parallel Set - 18 Piece



**M180**  
Boring Bar Set - 9 piece



**M181**  
Boring Bar Set - 12 piece



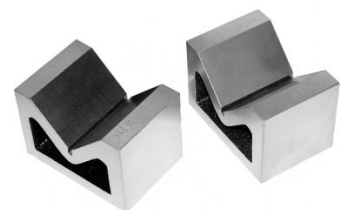
**V010**  
Alloy Steel Vee Block



**V003**  
Cast Iron Vee Block

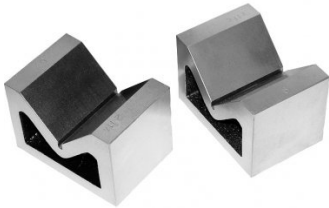


**V004**  
Cast Iron Vee Block



Product Brochure For M161

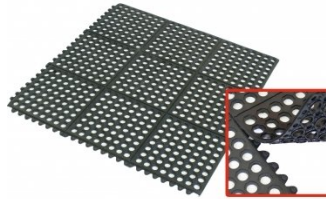
V006  
Cast Iron Vee Block



M800  
Rubber Mat - Anti-Fatigue



M805  
Rubber Mat - Anti-Fatigue



S090A  
Soluble Metal Cutting Fluid - 1 Litre



S090  
Soluble Metal Cutting Fluid - 5 Litre



S076  
Cutting Tool Lubricant Fluid - 500ml



S077  
Drilling, Tapping & Cutting Tool Lubricant Spray - 400g



S074  
Cutting Tool Lubricant Paste - 500g



O043  
Rust & Corrosion Preventive



O042  
General Purpose Lubricant & Corrosion Inhibitor



O044  
Rust & Corrosion Preventive

