

## Product Brochure For M153

# Mill Drill - Geared Head + Variable Speed - SIEG X3

Table Travel: (X) - 400mm (Y) - 150mm (Z) - 350mm

Dovetail Vertical Column



ORDER CODE:	M153
MODEL:	X3
Digital Readout:	Optional
Type:	Vertical
Table Size (mm):	550 x 160
Column Type:	Dovetail
Spindle Taper - Vertical:	3MT
Spindle Taper - Horizontal:	~
Longitudinal Travel (X-Axis) (mm):	400
Cross Travel (Y-Axis) (mm):	150
Vertical Travel (Z-Axis) (mm):	350
Type of Slides:	Dovetail
Ram Travel (mm):	~
Spindle to Table (mm):	400
Spindle to Base:	~
Spindle Travel / Diameter (mm):	82 / 60
Throat Depth (max.) (mm):	230
Tilting Head (Left ~ Right):	Fixed
Tilting Head (Forward ~ Back):	Fixed
Drilling Capacity (mm):	25
End Milling Capacity (mm):	25
Face Milling Capacity (mm):	50
Power Feed - Quill (mm/rev):	~
Power Feed - Longitudinal (X-Axis) (mm/min):	Optional
Power Feed - Cross (Y-Axis) (mm/min):	~
Power Feed - Vertical (Z-Axis) (mm/min):	~
Table T-Slot Size (inch / mm):	12
Work Table Load Capacity (kg):	35
Spindle Speeds Vertical (No./ rpm):	Variable (100 - 2000)
Spindle Speeds Horizontal (No./ rpm):	~
Spindle Speeds - Universal Head:	~
Motor Power - Vertical Spindle (kW / hp):	0.6 / 0.75
Motor Power - Horizontal Spindle (kW / hp):	~
Motor Power - Universal Head:	~
Voltage / Amperage (V / amp):	240 / 10
Nett Weight (kg):	178

## Description

Excellent quality mill drill machine designed for the model engineer.

This X3 mill drill machine has a (High / Low) 2-speed gearbox drive system to maximise torque: 0-1000rpm and 100-2000rpm ideal for different types of material.

The X3 mill drill is powered by a 600W (0.75hp) electronic variable speed motor adjusted by a dial located on the side control panel.

Heavy duty cast iron body and base for better stability.

Precision machined work table.

## Features

- Electronic variable speed system
- 2-speed gearbox (high/low) drive system to maximise torque
- All slides utilise dovetail construction for maximum rigidity
- Milling head is fixed at 90°
- Spindle lock for quill

## Product Brochure For M153

- Metal gears in gearbox
- Ground work table with T-slots
- Metric dial graduations @ 0.02mm for X & Y axis
- Vertical dial graduations @ 0.01mm

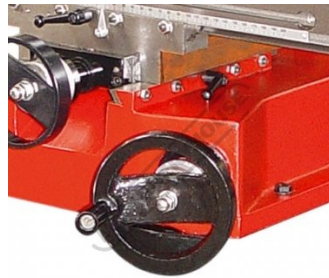
### Includes

- Drill chuck
- 3MT arbor

### Specific Features



Dovetail Column



Vertical Head Adjustment



Hi Low Gearbox



3MT Drill Chuck



Shown mounted to Optional Stand

### Recommended Accessories

D695

3-Axis Optimum Digital Readout Counter - 1µm

D694

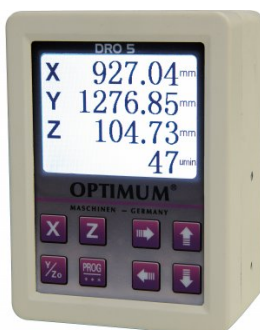
1500mm Optimum Magnetic Digital Readout Scale

C922B

Collet & Chuck Set - 8 Piece

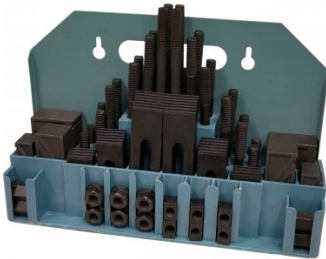
C926

Collet & Chuck Set - 20 Piece



Product Brochure For M153

**C0955**  
Clamp Kit 58 piece - Workshop Series



**V104**  
Vertex K-Type Milling Vice



**C085A**  
Clamp Kit Tee Nuts



**M3301**  
Metric HSS Slot Drill & End Mill Set - 10 Piece



**M3321**  
Imperial HSS Slot Drill & End Mill Set - 10 Piece



**M3280**  
13mm HSS End Mill Long Series



**M182**  
Precision Boring Head Kit



**M192**  
Boring Head Shank



**M180**  
Boring Bar Set - 9 piece



**M250**  
Parallel Set - 8 Piece



**M530**  
Universal Milling Kit - 4 Piece



**M562**  
Face Mill Arbor



Product Brochure For M153

**M515**  
Face Mill 45° - Super High-Rake



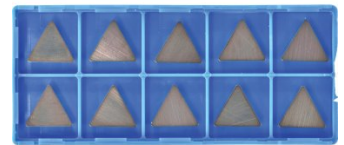
**L065**  
KYOCERA Carbide Inserts - Milling



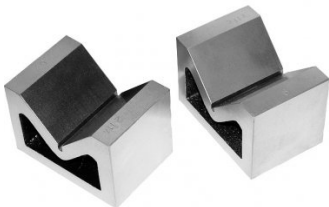
**M528**  
Face Mill 90° - Positive Rake



**L066**  
KYOCERA Carbide Inserts - Milling



**V004**  
Cast Iron Vee Block



**R001**  
Rotary Table



**R0014**  
Tilting Rotary Table



**P235**  
Coolant Pump & Tank



**S090A**  
Soluble Metal Cutting Fluid - 1 Litre



**S090**  
Soluble Metal Cutting Fluid - 5 Litre



**S076**  
Cutting Tool Lubricant Fluid - 500ml



**S077**  
Drilling, Tapping & Cutting Tool Lubricant Spray - 400g

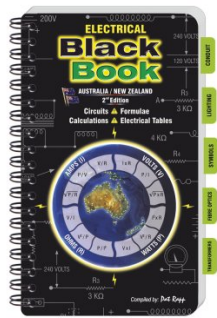


Product Brochure For M153

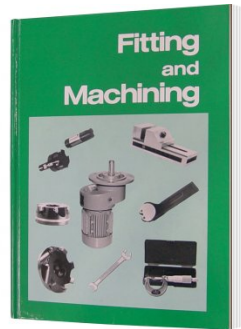
**S074**  
Cutting Tool Lubricant Paste - 500g



**L342**  
Electrical Black Book



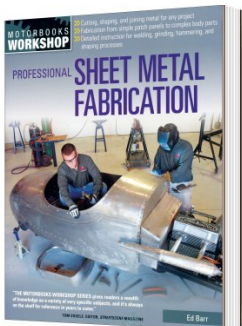
**L341**  
Fitting and Machining Technical Book



**L345**  
Handy Workshop Tips & Techniques - 1st Edition



**L3455**  
Professional Sheet Metal Fabrication Book



**L300**  
Magnetic Swarf Remover



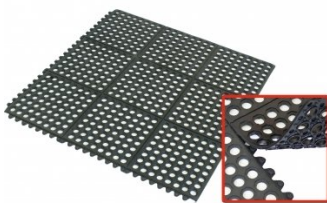
**M9991**  
Magnetic Floor Sweeper



**M800**  
Rubber Mat - Anti-Fatigue



**M805**  
Rubber Mat - Anti-Fatigue



**O043**  
Rust & Corrosion Preventive



**O042**  
General Purpose Lubricant & Corrosion Inhibitor



**O044**  
Rust & Corrosion Preventive

