

Product Brochure For M151

Mill Head Attachment - HM-10A (SIEG M6MA)



ORDER CODE:	M151
MODEL:	HM-10A
Digital Readout:	Optional
Type:	Vertical
Table Size (mm):	110 x 245
Column Type:	Dovetail
Spindle Taper - Vertical:	3MT
Spindle Taper - Horizontal:	~
Longitudinal Travel (X-Axis) (mm):	~
Cross Travel (Y-Axis) (mm):	~
Vertical Travel (Z-Axis) (mm):	190
Type of Slides:	Dovetail
Ram Travel (mm):	~
Spindle to Table (mm):	~
Spindle to Base:	~
Spindle Travel / Diameter (mm):	Fixed
Throat Depth (max.) (mm):	160
Tilting Head (Left ~ Right):	-25° to 45°
Tilting Head (Forward ~ Back):	Fixed
Drilling Capacity (mm):	13
End Milling Capacity (mm):	13
Face Milling Capacity (mm):	25
Power Feed - Quill (mm/rev):	~
Power Feed - Longitudinal (X-Axis) (mm/min):	~
Power Feed - Cross (Y-Axis) (mm/min):	~
Power Feed - Vertical (Z-Axis) (mm/min):	~
Table T-Slot Size (inch / mm):	~
Work Table Load Capacity (kg):	~
Spindle Speeds Vertical (No./ rpm):	Variable (100 - 2500)
Spindle Speeds Horizontal (No./ rpm):	~
Spindle Speeds - Universal Head:	~
Motor Power - Vertical Spindle (kW / hp):	0.35 / 0.5
Motor Power - Horizontal Spindle (kW / hp):	~
Motor Power - Universal Head:	~
Voltage / Amperage (V / amp):	240 / 10
Nett Weight (kg):	42

Features

- 2-speed gearbox (high/low) drive system to maximise torque
- 350W (1/2hp) electronic variable-speed controlled motor
- Heavy duty cast iron body and base for better stability
- Slides utilise dovetail construction for maximum rigidity
- Milling head tilts -25° to 45°
- Spring assisting milling head return
- Vertical micro feed dial 0.025mm
- Metric dial graduations 0.02mm
- Supplied with a ground work table that incorporates 12mm T-slots that attaches to the cross slide

Includes

- 13mm keyed drill chuck
- 3MT Arbor
- Set of spanners to suit
- Safety cutter guard

Optional Accessories

- AL-60 Bench lathe (L148)

Product Brochure For M151

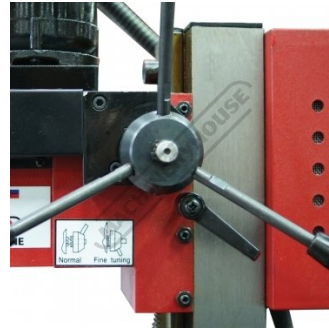
Specific Features



Shown Mounted to Optional AL 60 Lathe



Head Right View



Z-Axis Head Lever



Head Support Lock



Z-Axis Fine Adjustment Dial

MILLING & DRILLING	
Drilling capacity	13 mm
End milling capacity	16 mm
Face milling capacity	30 mm
Spindle taper	MT#3
Spindle rotary angle	-25° ~ +45°
output power	350W
Spindle speed	LOW : 0~1100 rpm
	HIGH: 0~2500 rpm
Voltage	220~240V AC
Frequency	50/60 Hz

Capacities



Variable Speed Control



Chuck Guard



Stop Switch



Height Indicator



Head Left View



Low High Speed Lever



Swivel Head



Milling Table Shown on Optional Lathe



Shown Mounted on Optional Lathe with Milling Table

Product Brochure For M151

Recommended Accessories

D695
3-Axis Optimum Digital Readout Counter - 1µm



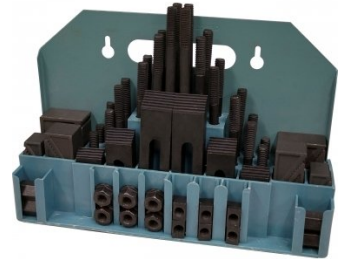
D694
1500mm Optimum Magnetic Digital Readout Scale



C922B
Collet & Chuck Set - 8 Piece



C0955
Clamp Kit 58 piece - Workshop Series



C926
Collet & Chuck Set - 20 Piece



M3301
Metric HSS Slot Drill & End Mill Set - 10 Piece



V104
Vertex K-Type Milling Vice



R0014
Tilting Rotary Table



Product Brochure For M151

R001
Rotary Table



M3321
Imperial HSS Slot Drill & End Mill Set - 10 Piece



M3280
13mm HSS End Mill Long Series



M182
Precision Boring Head Kit



M192
Boring Head Shank



M180
Boring Bar Set - 9 piece



M250
Parallel Set - 8 Piece



M530
Universal Milling Kit - 4 Piece



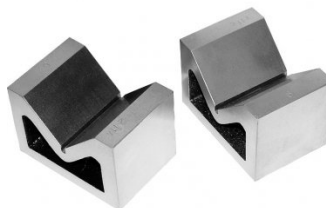
M528
Face Mill 90° - Positive Rake



L066
KYOCERA Carbide Inserts - Milling



V004
Cast Iron Vee Block



P235
Coolant Pump & Tank



Product Brochure For M151

S090A
Soluble Metal Cutting Fluid - 1 Litre



S090
Soluble Metal Cutting Fluid - 5 Litre



S076
Cutting Tool Lubricant Fluid - 500ml



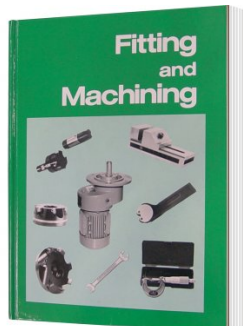
S077
Drilling, Tapping & Cutting Tool Lubricant Spray - 400g



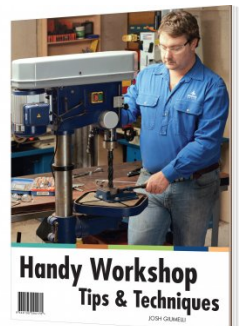
S074
Cutting Tool Lubricant Paste - 500g



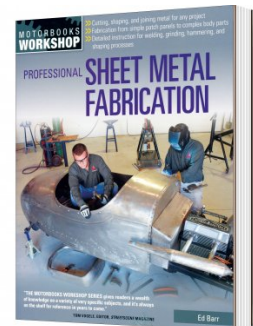
L341
Fitting and Machining Technical Book



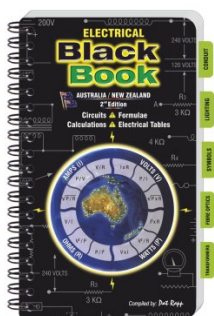
L345
Handy Workshop Tips & Techniques - 1st Edition



L3455
Professional Sheet Metal Fabrication Book



L342
Electrical Black Book



M9991
Magnetic Floor Sweeper



L300
Magnetic Swarf Remover

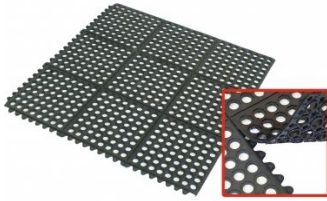


M800
Rubber Mat - Anti-Fatigue



Product Brochure For M151

M805
Rubber Mat - Anti-Fatigue



O043
Rust & Corrosion Preventive



O042
General Purpose Lubricant & Corrosion Inhibitor



O044
Rust & Corrosion Preventive

