

## Product Brochure For M150A

### Mini Mill Drill - Tilting Head - HM-10L (SIEG X2L)

Table Travel: (X) - 300mm (Y) - 130mm (Z) - 180mm

Dovetail Vertical Column



ORDER CODE:	M150A
MODEL:	HM-10L (X2L)
Digital Readout:	Optional
Type:	Vertical
Table Size (mm):	460 x 120
Column Type:	Dovetail
Spindle Taper - Vertical:	3MT
Spindle Taper - Horizontal:	~
Longitudinal Travel (X-Axis) (mm):	300
Cross Travel (Y-Axis) (mm):	130
Vertical Travel (Z-Axis) (mm):	180
Type of Slides:	Dovetail
Ram Travel (mm):	~
Spindle to Table (mm):	280
Spindle to Base:	~
Spindle Travel / Diameter (mm):	Fixed
Throat Depth (max.) (mm):	160
Tilting Head (Left ~ Right):	±45°
Tilting Head (Forward ~ Back):	Fixed
Drilling Capacity (mm):	13
End Milling Capacity (mm):	16
Face Milling Capacity (mm):	30
Power Feed - Quill (mm/rev):	~
Power Feed - Longitudinal (X-Axis) (mm/min):	~
Power Feed - Cross (Y-Axis) (mm/min):	~
Power Feed - Vertical (Z-Axis) (mm/min):	~
Table T-Slot Size (inch / mm):	12
Work Table Load Capacity (kg):	25
Spindle Speeds Vertical (No./ rpm):	Variable (100 - 2500)
Spindle Speeds Horizontal (No./ rpm):	~
Spindle Speeds - Universal Head:	~
Motor Power - Vertical Spindle (kW / hp):	0.35 / 0.5
Motor Power - Horizontal Spindle (kW / hp):	~
Motor Power - Universal Head:	~
Voltage / Amperage (V / amp):	240 / 10
Nett Weight (kg):	78

### Description

Excellent quality mini mill drill machine designed for the model engineer

### Features

- The HM-10L mini mill drill is powered by a 350W (1/2hp) electronic variable speed motor
- Mill head tilts to ±45° both directions
- Heavy duty cast iron body and base for better stability
- All slides utilise dovetail construction for maximum rigidity
- Precision machined work table
- 2-speed gearbox (high/low) drive system to maximise torque
- Ground work table with T-slots
- Concertina slide-way covers
- Spring assisting milling head return
- Vertical micro feed dial 0.025mm
- Metric dial graduations 0.02mm

### Includes

— 13mm keyed drill chuck

Product Brochure For M150A

- 3MT Arbor
- Set of spanners to suit
- Safety cutter guard

**Specific Features**



Electronic variable speed system



Switch Box



Head Right View



9 Quill Handle



Head Controls



Head Left View



Chuck Guard



Fine Adjustment Dial



Low High Speed Lever



Vertical Height reading



Milling head Tilts 45 Degrees both directions



Sliding Lock



Milling table

Product Brochure For M150A

Recommended Accessories

T773  
Industrial Mobile Tooling  
Cabinet Workstation



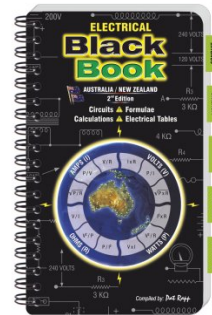
L300  
Magnetic Swarf Remover



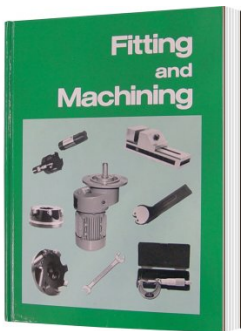
M9991  
Magnetic Floor Sweeper



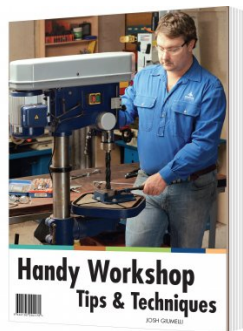
L342  
Electrical Black Book



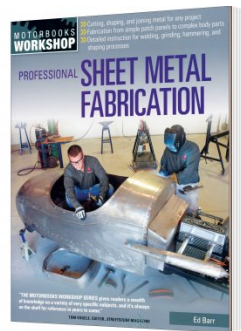
L341  
Fitting and Machining Technical  
Book



L345  
Handy Workshop Tips &  
Techniques - 1st Edition



L3455  
Professional Sheet Metal  
Fabrication Book



C926  
Collet & Chuck Set - 20 Piece

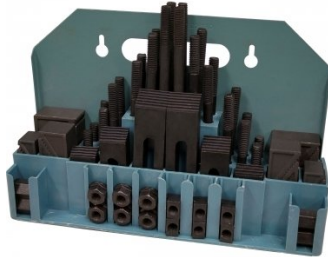


Product Brochure For M150A

**C922B**  
Collet & Chuck Set - 8 Piece



**C0955**  
Clamp Kit 58 piece - Workshop Series



**V104**  
Vertex K-Type Milling Vice



**M3301**  
Metric HSS Slot Drill & End Mill Set - 10 Piece



**M3321**  
Imperial HSS Slot Drill & End Mill Set - 10 Piece



**M3280**  
13mm HSS End Mill Long Series



**M182**  
Precision Boring Head Kit



**M192**  
Boring Head Shank



**M180**  
Boring Bar Set - 9 piece



**M250**  
Parallel Set - 8 Piece



**M530**  
Universal Milling Kit - 4 Piece

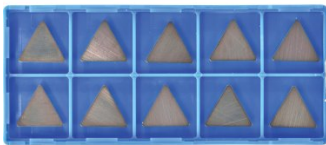


**M528**  
Face Mill 90° - Positive Rake

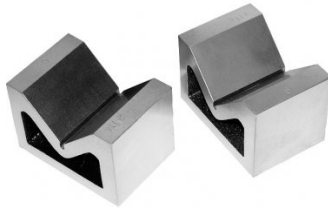


Product Brochure For M150A

L066  
KYOCERA Carbide Inserts -  
Milling



V004  
Cast Iron Vee Block



R001  
Rotary Table



R0014  
Tilting Rotary Table



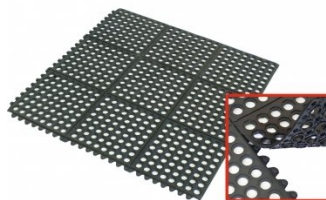
P235  
Coolant Pump & Tank



M800  
Rubber Mat - Anti-Fatigue



M805  
Rubber Mat - Anti-Fatigue



S090A  
Soluble Metal Cutting Fluid - 1  
Litre



S090  
Soluble Metal Cutting Fluid - 5  
Litres



S076  
Cutting Tool Lubricant Fluid -  
500ml



S077  
Drilling, Tapping & Cutting Tool  
Lubricant Spray - 400g



S074  
Cutting Tool Lubricant Paste -  
500g



Product Brochure For M150A

---

O043  
Rust & Corrosion Preventive



O042  
General Purpose Lubricant & Corrosion Inhibitor



O044  
Rust & Corrosion Preventive

