

Product Brochure For M138

Mill Drill - Geared & Tilting Head - HM-46B

Table Travel: (X) - 485mm (Y) - 175mm (Z) - 430mm

Includes Dovetail Column

Ex GST
\$3,160.00

Inc GST
\$3,634.00



ORDER CODE:	M138
MODEL:	HM-46B
Digital Readout:	~
Type:	Vertical
Table Size (mm):	730 x 210
Column Type:	Dovetail
Spindle Taper - Vertical:	3MT
Spindle Taper - Horizontal:	~
Longitudinal Travel (X-Axis) (mm):	485
Cross Travel (Y-Axis) (mm):	175
Vertical Travel (Z-Axis) (mm):	430
Type of Slides:	Dovetail
Ram Travel (mm):	~
Spindle to Table (mm):	485
Spindle to Base:	~
Spindle Travel / Diameter (mm):	120 / 75
Throat Depth (max.) (mm):	265
Tilting Head (Left ~ Right):	±90°
Tilting Head (Forward ~ Back):	Fixed
Drilling Capacity (mm):	31.5
End Milling Capacity (mm):	28
Face Milling Capacity (mm):	80
Power Feed - Quill (mm/rev):	~
Power Feed - Longitudinal (X-Axis) (mm/min):	Optional
Power Feed - Cross (Y-Axis) (mm/min):	~
Power Feed - Vertical (Z-Axis) (mm/min):	~
Table T-Slot Size (inch / mm):	14
Work Table Load Capacity (kg):	55
Spindle Speeds Vertical (No./ rpm):	6 (95 - 1650)
Spindle Speeds Horizontal (No./ rpm):	~
Spindle Speeds - Universal Head:	~
Motor Power - Vertical Spindle (kW / hp):	1.5 / 2
Motor Power - Horizontal Spindle (kW / hp):	~
Motor Power - Universal Head:	~
Voltage / Amperage (V / amp):	240 / 10
Nett Weight (kg):	380

Description

The HM-46B milling machines is similar in overall size to the popular HM-32 but with the additional benefit of a 6-speeds 95-1650rpm, gear driven head which can be tilted up to 90° either side of the vertical. This feature allows the head to be positioned in a variety of positions, allowing a whole range of milling, slotting, grooving, drilling and boring operations to be carried out on different angles. In addition the milling head is also mounted to a vertical dovetail slide system that allows the head to maintain on the exact same centre position when raising or lowering.

The usual handle-driven down feed is available for precision drilling and there is a fine manual down-feed control for precise vertical milling.

The motor is controlled by a separate forward and reverse on/off button switches.

There is a heavy duty steel stand available as an extra, strongly recommended bearing in mind the weight of the machine.

Also available is an optional power feed attachment which fits to the left hand end of the table and provides a smooth, variable speed longitudinal drive.

Features

— Gear driven head 6 speeds

Product Brochure For M138

- Dovetail vertical Z-axis
- Mill head tilts to $\pm 90^\circ$ from vertical with digital display
- Large 730 x 210mm ground work table with T-slots
- Adjustable leadscrew nuts eliminating backlash on both axis
- Fine feed hand wheel operating quill feed
- Forward and reverse on/off button switches
- Digital tilting head gauge
- 3MT spindle with 75mm diameter quill
- Adjustable table and drill length stops
- Rack and pinion wind-up head
- Rear slide-way cover and slide clamps on all axis
- Spindle lock for quill
- Table lock on both axis
- Metric dial graduations @ 0.05mm for X & Y axis

Includes

- Digital tilting head gauge
- Drill chuck & arbor
- Face cutter & arbor
- Interlocked spindle safety guard
- 3-2MT sleeve
- M12 drawbar
- 1/2" x 12tpi whitworth drawbar

Specific Features



Tilting Head Left



Tilting Head Right



Front View



Left View



Left Side View



Shown On Optional Stand



Ground Work Table with T Slots



Quill Feed

Product Brochure For M138



Fine Quill Feed Handwheel



Head Controls



Forward Reverse ON OFF-Emergency Switches



Quill Depth Stop Scale & Spindle Lock



Spindle Speed Selectors

SPINDLE SPEEDS RPM

	1	2	3
L	95	180	300
H	570	1000	1650

CAUTION
Ensure spindle has stopped before changing speed

www.machineryhouse.com.au

Spindle Speed Chart



Tilting Head Scale



Digital Tilting Head Gauge

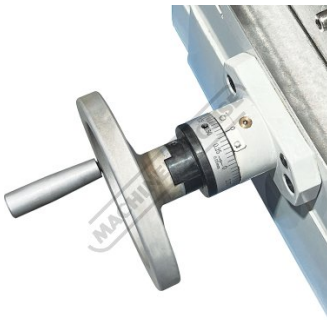


Table Cross Feed Handle



Table Longitudinal Handle



Includes Drill Chuck & Arbor



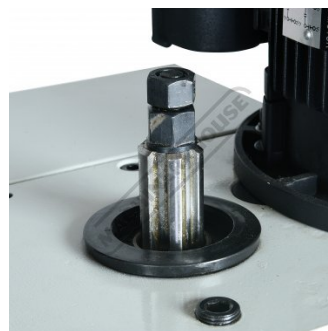
Includes Face Mill Cutter



Interlocked Spindle Safety Guard



Rack & Pinion Wind Up Head



Drawbar



Motor-Drawbar

Product Brochure For M138



Included Accessories

Recommended Accessories

M001

Steel Machine Mount & Rubber Insert



M135

Mill Drill Stand



M230

Power Feed Unit



M240

Transformer



K150

Mill-Drill Accessory Package Deal - Imperial Cutters



K151

Mill-Drill Accessory Package Deal - Metric Cutters



C0965

Clamp Kit 58 piece - Workshop Series



C922B

Collet & Chuck Set - 8 Piece



Product Brochure For M138

C926
Collet & Chuck Set - 20 Piece



M3301
Metric HSS Slot Drill & End Mill Set - 10 Piece



M3321
Imperial HSS Slot Drill & End Mill Set - 10 Piece



M3280
13mm HSS End Mill Long Series



M182
Precision Boring Head Kit



M192
Boring Head Shank



M180
Boring Bar Set - 9 piece



M250
Parallel Set - 8 Piece



M530
Universal Milling Kit - 4 Piece



M562
Face Mill Arbor



M515
Face Mill 45° - Super High-Rake



L065
KYOCERA Carbide Inserts - Milling



Product Brochure For M138

M528
Face Mill 90° - Positive Rake



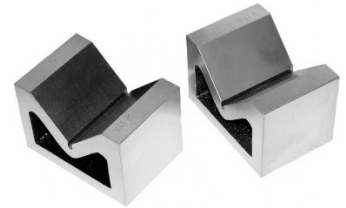
M529
Face Mill 90° - Positive Rake



L066
KYOCERA Carbide Inserts - Milling



V004
Cast Iron Vee Block



V105
Vertex K-Type Milling Vice



R006
Vertex Rotary Table



P235
Coolant Pump & Tank



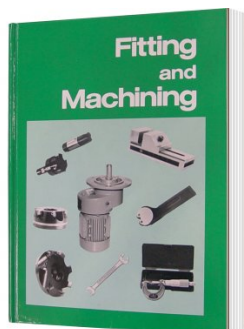
S090A
Soluble Metal Cutting Fluid - 1 Litre



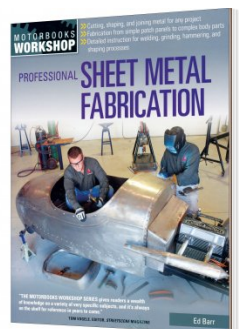
S090
Soluble Metal Cutting Fluid - 5 Litre



L341
Fitting and Machining Technical Book



L3455
Professional Sheet Metal Fabrication Book

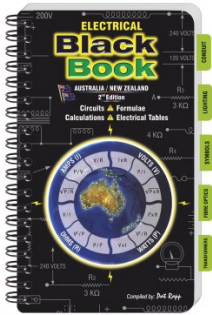


L345
Handy Workshop Tips & Techniques - 1st Edition



Product Brochure For M138

L342
Electrical Black Book



L300
Magnetic Swarf Remover



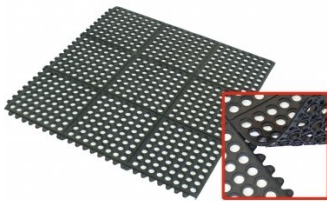
M9991
Magnetic Floor Sweeper



M800
Rubber Mat - Anti-Fatigue



M805
Rubber Mat - Anti-Fatigue



O043
Rust & Corrosion Preventive



O042
General Purpose Lubricant & Corrosion Inhibitor



O044
Rust & Corrosion Preventive

