

Product Brochure For L764

Lathe - Boring Ring for Chuck Soft Jaws

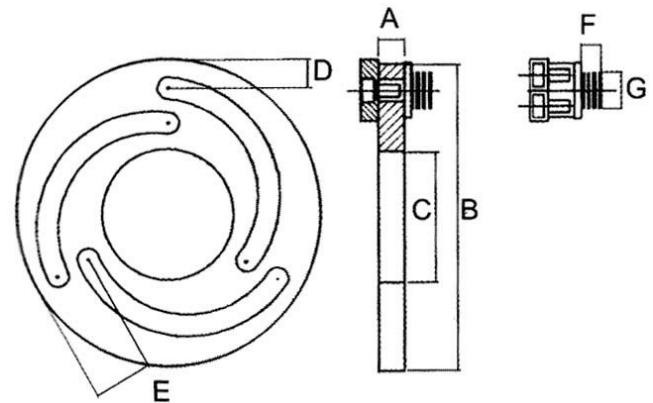
Ø12" (Ø315mm)

On Sale - Back In Stock Soon

| Ex GST | Inc GST |
|-----------------|-----------------|
| \$574.00 | \$660.10 |
| \$460.00 | \$529.00 |



| | |
|-------------------|------|
| ORDER CODE: | L764 |
| Size (inch): | 12" |
| A (mm): | 15 |
| B (mm): | 316 |
| C (mm): | 188 |
| D (mm): | 21 |
| E (mm): | 50 |
| F (mm): | 9 |
| G (mm): | 21.5 |
| Nett Weight (kg): | 6 |



Description

To suit any lathe that uses soft jaws. The ring is used to hold the jaws in place so the the soft jaws can be machined to a certain size.

Material SCM440

Features

- Maintains a high level of accuracy
- The operation process is as follows
- 1. Set the jaws to the correct position that will allow the diameter required to be machined.
- 2. Adjust the boring ring so that the pins are located in the recessed holes in the jaws.
- 3. Lock the chuck so that the boring ring is clamped.
- 4. Machine the jaws to the required size.
- 5. Unlock the chuck and remove the boring ring
- 6. If the process is followed the jaws will repeat the accuracy each time the chuck is closed onto the work piece.