

Product Brochure For L4062

93° Rhombic / Positive - Right Hand Turning Tool Holder - SVJCR-2020K16

20mm Tool Height

Insert tip not included

Ex GST
\$98.00

Inc GST
\$112.70



ORDER CODE:	L4062
Part Number - Style:	SVJC
Tool Height Size (mm):	20
Clamping Method of Insert:	Center screw
Category:	External turning
Connection style:	Square shank
Back End Size:	20x20
Application:	Profiling
Hand Type:	Right
Holder Style:	93°
Clearance Angle:	Positive
Insert Type:	VCMT16
A (H) (mm):	20
B (mm):	20
C (LF) (mm):	125
LH (mm):	33
F (WF) (mm):	25
E (mm):	~



Made in Taiwan



Description

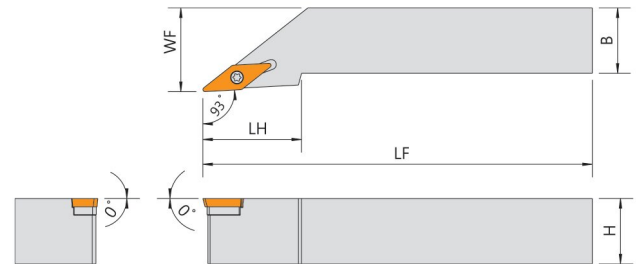
Quality Tipped Tool Holders ISO Standard to suit Tungsten Carbide Indexable Insert Tips.

NOTE: Inserts not included with tool holders

Use insert VCMT160404TN15 (L0521)

Features

- Multipurpose profiling toolholder with a 93° approach angle, equipped with rhombic positive insert (angle 35°)
- For roughing, semi-finishing, finishing and general applications
- Right hand tool holder suitable for turning towards the chuck



Product Brochure For L4062

Specific Features



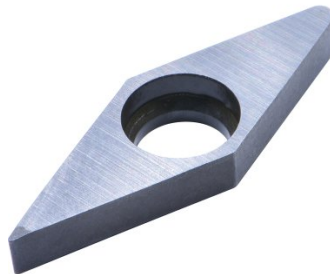
Top View

Recommended Accessories

L0521
35° Rhombic Positive Turning
Insert



L5229
SEAT to Suit Tool Holder



L5225
Seat Pin to Suit Tool Holder



L5227
WRENCH to Suit Tool Holder



L5224
SCREW to Suit Tool Holder



L538
Key to Suit Tool Holder

