

Product Brochure For L103

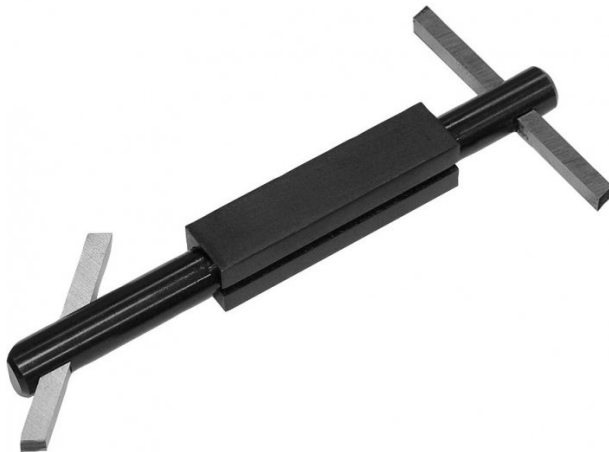
Boring Bar with Holder

5/16"

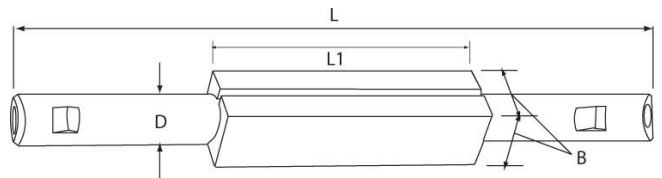
HSS bit not included

Ex GST
\$44.00

Inc GST
\$50.60



| | |
|-------------------|---------------|
| ORDER CODE: | L103 |
| B: | 1" |
| D: | 3/4" |
| L: | 9" |
| L1: | 3-3/4" |
| Toolbit Required: | 5/16" (L0004) |
| Nett Weight (kg): | 0.55 |



Description

NOTE: HSS Tool bits not supplies
Use 5/16" HSS Tool Bit (L0004)

Features

- Double-ended bars with 45° and 90° angular square holes at either end
- Accurately broached square holes to accept standard high speed steel or carbide tool bits
- Supplied fitted with screws and allen key

Product Brochure For L103

Recommended Accessories

L0004
High Speed Steel Bits - Pack of 3

L100
Boring Bar with Holder

L101
Boring Bar with Holder

L102
Boring Bar with Holder



L104
Boring Bar with Holder

L006A
Boring Bar Set - HSS

L431
Boring Bar Set - Carbide Insert

L430
Boring Bar Set - Carbide Insert



Product Brochure For L103

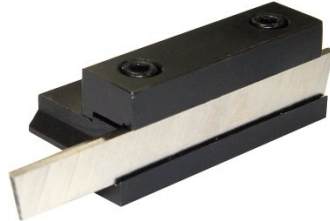
L073

Parting Tool Holder - Suits 1/2"
HSS Tool Bit



L074

Parting Tool Holder - Suits 1/2"
HSS Tool Bit



L070L

Left Hand Lathe Turning Tool
Holder - American Style



L070R

Right Hand Lathe Turning Tool
Holder - American Style



L070S

Straight Lathe Turning Tool
Holder - American Style

