

Product Brochure For L101

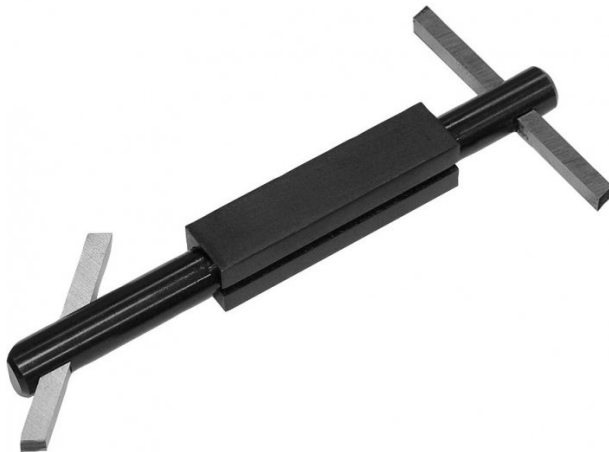
Boring Bar with Holder

3/16"

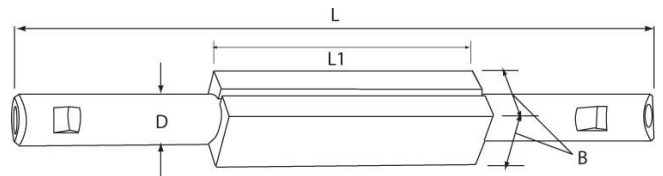
HSS bit not included

Ex GST
\$26.00

Inc GST
\$29.90



ORDER CODE:	L101
B:	5/8"
D:	7/16"
L:	5-1/4"
L1:	2-1/2"
Toolbit Required:	3/16" (L0002)
Nett Weight (kg):	0.28



Description

NOTE: HSS Tool bits not supplied
Use 3/16" HSS Tool Bit (L0002)

Features

- Double-ended bars with 45° and 90° angular square holes at either end
- Accurately broached square holes to accept standard high speed steel or carbide tool bits
- Supplied fitted with screws and allen key

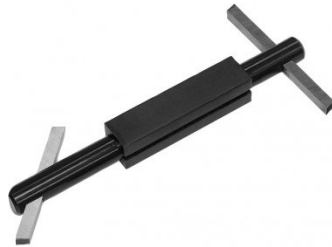
Product Brochure For L101

Recommended Accessories

L0002
High Speed Steel Bits - Pack of 3



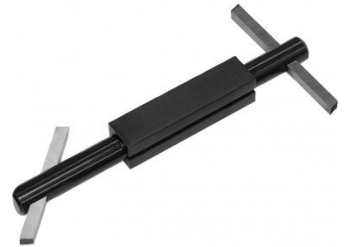
L100
Boring Bar with Holder



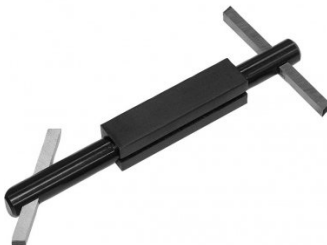
L102
Boring Bar with Holder



L103
Boring Bar with Holder



L104
Boring Bar with Holder



L006A
Boring Bar Set - HSS



L431
Boring Bar Set - Carbide Insert



L430
Boring Bar Set - Carbide Insert



Product Brochure For L101

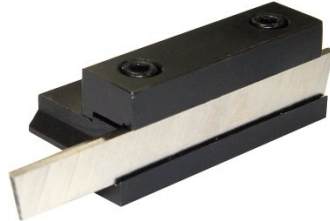
L073

Parting Tool Holder - Suits 1/2"
HSS Tool Bit



L074

Parting Tool Holder - Suits 1/2"
HSS Tool Bit



L070L

Left Hand Lathe Turning Tool
Holder - American Style



L070R

Right Hand Lathe Turning Tool
Holder - American Style



L070S

Straight Lathe Turning Tool
Holder - American Style

