

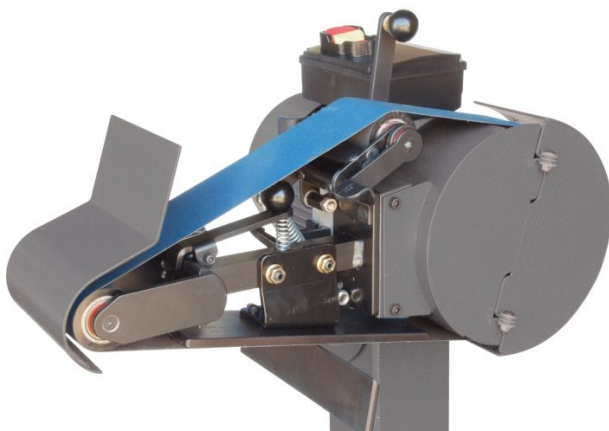
Product Brochure For L099

## Select-A-Rad Pedestal Belt Grinder / Notcher - Series 2 - SR-483

75 x 1220mm Belt Size  
4 Work Stations

**Ex GST**                      **Inc GST**  
**\$3,400.00**                      **\$3,910.00**

ORDER CODE:	L099
MODEL:	SR-483
Type:	Belt Grinder / Notcher
Mounting Type - Bench / Pedestal:	Pedestal
Includes Stand:	Yes
Belt Size (mm):	75 x 1220
Belt Speed (fpm / mpm):	3375 / 1028
Motor Speed (rpm):	2800
Motor Power (kW / hp):	1.5 / 2
Voltage / Amperage (V / amp):	240 / 10
Nett Weight (kg):	50



### Description

The Select-A-Rad 483 Tube Notcher / Belt Grinder uses a 75mm wide belt to notch 50 DIA. handrails and smaller. Cartridges from 20 to 75 DIA. can be changed in 8 seconds. Functions are similar to Radius Master. A great all-round workshop machine, however not suitable for knife-making.

Designed for balistrade and stainless specialists, engineers, fabricators, welders, fitters, foundries, toolmakers, rural manufacturers, mechanics, restorers, aircraft engineers, medical equipment manufacturers, sculptors, model makers and manufacturers of many wood and plastic products.

While not suitable for knife-making, the Select-A-Rad Tube Notcher / Belt Grinder is a fantastic all round workshop machine!

Optional Accessories:  
Contact Wheels Ø19 - Ø75mm

### Features

- 4 work stations, 2 contact wheels (1 x Ø50mm & 1 x Ø75mm), (9 sizes available)
  - Produces quality chatter free finishes on stainless steel
  - Uses include contouring, squaring, facing, de-burring (inside tube included), sharpening, all stainless finishes, texturing, micro finishing and polishing
  - Outstanding tracking allows notching sharp corners at the very edge of the belt. 3 Plus better belt life
  - All wheels are precision ground for smooth chatter free finishing especially of flat surfaces
  - Accurate tracking provides sharp corner notching at the edge of the belt on tool rest
  - Tracking mechanism allows narrow belts to be used down to 12 mm to follow contours in free strapping (unsupported ) section of belt
  - Internal deburring of tube is possible at the same time as external chamfering
  - Easily converts to flat bed linisher for grinding of faces and edges
  - 203mm (8") drive pulley is precision ground with hardness designed to produce chatter free finishes both ground and brushed to match all stainless grades
  - Convenience is expanded when machine is laid on its side for edge grinding or tube notching on the tilting table (included)
  - Belt changing is made easy by simply swinging away the guards and pushing down on the belt at the tracking wheel
  - Dust proof switch and 10ft (3m) lead and plug provided
  - Tilting table for contouring and pipe notching
  - The only belt grinder that accurately and rigidly tracks the heaviest backed belts (essential in drill & cutter sharpening)
  - Sealed bearings teflon gaskets - adjustable pivots give many years life expectancy - Designed from 35 years experience in belt grinding
- Includes pedestal stand

## Product Brochure For L099

- 75 x 1220mm belt
- 1.5kW / 2hp 240V Motor totally enclosed with overload protection
- Performance and durability backed by a 2 year commercial warranty
- Made in Australia

### Includes

- Tilting top stand & base plate
- Tool rest, Notching tilt table & fence
- 1 x Zirconia belt
- 2 contact wheels Ø50mm & Ø75mm

### Optional Accessories

- Contact wheels available:  
• Ø19, Ø25, Ø32, Ø38, Ø44, Ø50, Ø63, Ø75, Ø89mm

### Specific Features



Swing out Guard



Belt Tension



Flat Grinding on Platen



Tilting Table for Contouring and Pipe Notching



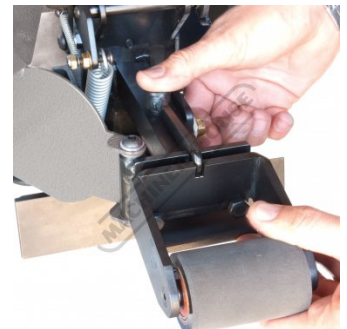
Handle



Hollow Grinding and Micro Finishing on 9inch Precision Ground Wheel



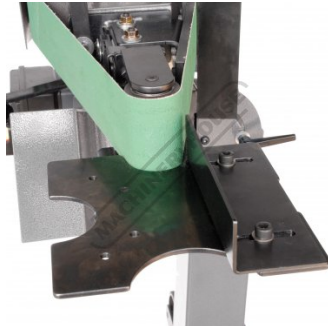
Pipe Notching



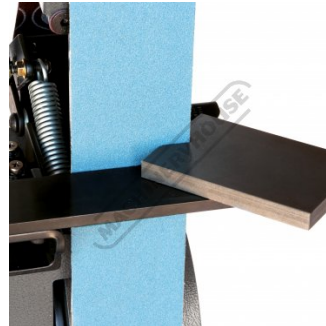
Quick Cartridge Changer



Finishing Tube



Table



Accurate Tracking Produces Sharp Corners on Quick Release Toolrest



Internal Tube De-burring

Product Brochure For L099



Vertical Toolrest Position



Vertical Position



Left View on Stand



Internal Tube De-burring

**Recommended Accessories**

A48308Z

80G Zirconia Linishing Belt

A48312Z

120G Zirconia Linishing Belt

L099A

Contact Wheel Cartridge - Ø19mm

L099B

Contact Wheel Cartridge - Ø25mm



L099C

Contact Wheel Cartridge - Ø32mm

L099D

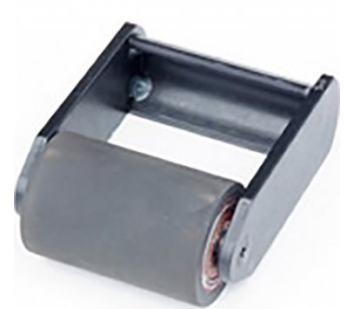
Contact Wheel Cartridge - Ø38mm

L099E

Contact Wheel Cartridge - Ø44mm

L099F

Contact Wheel Cartridge - Ø50mm



Product Brochure For L099

---

L099G

Contact Wheel Cartridge -  
Ø63mm



L099H

Contact Wheel Cartridge -  
Ø75mm



L099I

Contact Wheel Cartridge -  
Ø89mm



G183

Abrasive Belt & Disc Cleaning  
Stick



W322A

Flame Retardant Dust Hose -  
Metal or Timber

