

Product Brochure For L070S

## Straight Lathe Turning Tool Holder - American Style

9.5 x 22mm

HSS bit not included

**On Sale**

Ex GST

Inc GST

~~\$38.00~~

~~\$43.70~~

**\$30.43**

**\$35.00**



ORDER CODE:	L070S
Hand Type:	Straight
Style:	American
Centre Height Min. - Max. (mm):	10 - 23
Shank Size (W x H) (inch / mm):	- / 9.5 x 22
Overall Length (inch / mm):	- / 127
Tool Bit Capacity ( inch / mm):	1/4" / 6.3
Nett Weight (kg):	0.36



### Description

Straight Hand TURNING TOOL HOLDER  
For HSS Tool Bits  
American Style - 1/4" Tool Bit

NOTE: HSS Tool bits not supplied  
Uses Tool Bit L0003

### Features

- Manufactured from high grade steel
- Case-hardened and ground
- Supplied with wrench, but without tool bit
- Available in straight (S), right (R) and left (L) hand shanks

Product Brochure For L070S

**Specific Features**



**Recommended Accessories**

- |   |  |   |  |
|---|--|---|--|
| <p><b>L0003</b><br/>High Speed Steel Bits - Pack of 3</p> | <p><b>L070L</b><br/>Left Hand Lathe Turning Tool Holder - American Style</p> | <p><b>L070R</b><br/>Right Hand Lathe Turning Tool Holder - American Style</p> | <p><b>L073</b><br/>Parting Tool Holder - Suits 1/2" HSS Tool Bit</p> |
|---|--|---|--|



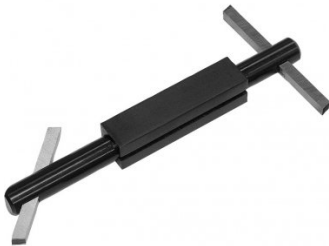
- |  |   |   |   |
|--|---|---|---|
| <p><b>L074</b><br/>Parting Tool Holder - Suits 1/2" HSS Tool Bit</p> | <p><b>L100</b><br/>Boring Bar with Holder</p> | <p><b>L101</b><br/>Boring Bar with Holder</p> | <p><b>L102</b><br/>Boring Bar with Holder</p> |
|--|---|---|---|



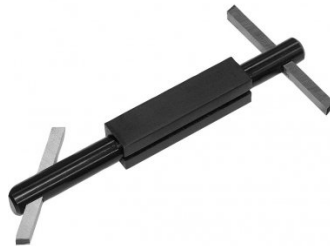
Product Brochure For L070S

---

L103  
Boring Bar with Holder



L104  
Boring Bar with Holder



L006A  
Boring Bar Set - HSS



L431  
Boring Bar Set - Carbide Insert



L430  
Boring Bar Set - Carbide Insert

