

Product Brochure For L0602

## KYOCERA Carbide Inserts - Turning - CNMG 120408PMG

Grade CA125P - General Purpose Steel

10 Inserts Per Pack

<b>Ex GST</b>	<b>Inc GST</b>
<b>\$170.00</b>	<b>\$195.50</b>

ORDER CODE:	L0602
MODEL:	CNMG120408PS
Grade:	CA125P
Application:	General Purpose Steel
Pieces in Set (Qty):	10
[D] Insert IC Size (Inscribed Circle) (mm):	12.7
[D1] Insert Hole Size (mm):	5.16
[L10] Insert Cutting Edge Length (mm):	~
[S] Insert Thickness (mm):	4.76
[R?] Corner Radius (mm):	0.80
Relief Angle (Deg):	~
d (mm):	12.7
Insert shape (Style):	~



**KYOCERA**  
JAPANESE CARBIDE



### Description

CA125P Grade CVD Coated Carbide for Steel

Suitable for continuous to heavy interrupted machining, these inserts are designed for general-purpose applications.

PMG Chipbreaker

Covers a wide range of machining applications from medium machining to roughing.

Excellent wear resistance with low cutting force design. Reduces chip shape inconsistencies and improves tool life.

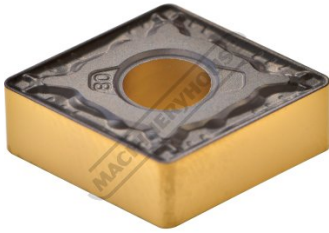
### Features

- Japanese Made
- CVD Coated Carbide with Thin Ultra-fine TiCN Coating
- 10 Inserts Per Pack

## Product Brochure For L0602

---

### Specific Features



Tip