

Product Brochure For L0542

KENNAMETAL Carbide Inserts - Turning - TCGT 16T304 HP

Grade KC5410 - Aluminium

5 Inserts Per Pack



Description

KC5410 Grade - Aluminium

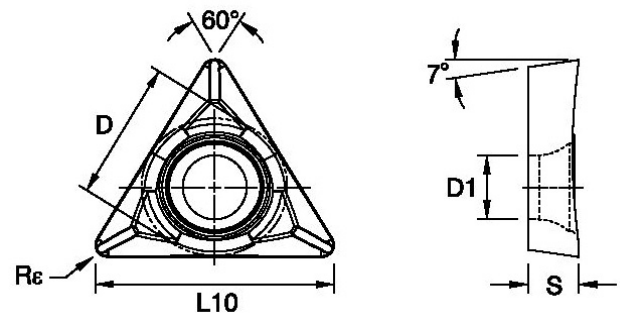
Manufactured in Germany, the KENNAMETAL KC5410 HP insert is designed for high-performance machining of aluminium and other non-ferrous materials. Its premium PVD-coated carbide grade provides excellent wear resistance, smooth chip flow and superior surface finishes. Ideal for roughing, semi-finishing and finishing operations, it also performs well on nylon and plastics.

The "HP" indicates a high-positive, light-feed chipbreaker designed to achieve excellent finishes and prevent built-up edges

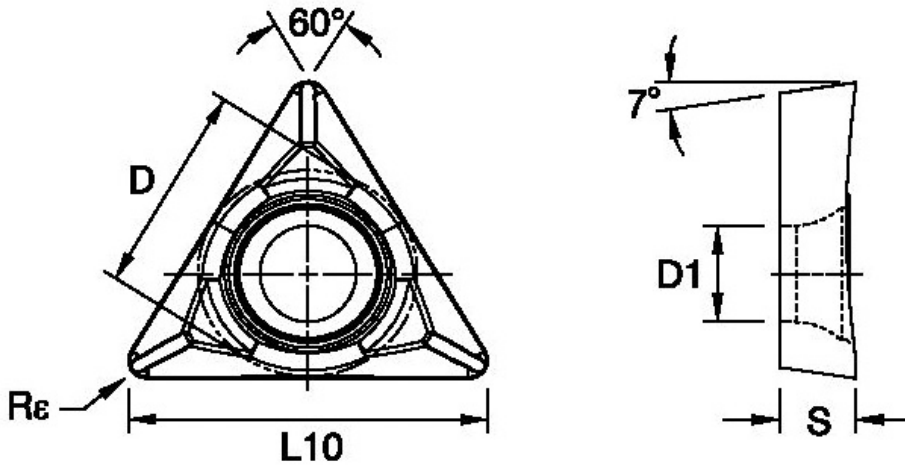
Features

- Made in Germany for exceptional quality and precision.
- Premium PVD-coated insert on a highly deformation-resistant unalloyed substrate for extended tool life.
- Optimised high-positive cutting geometry ensures smooth cutting action, reduced cutting forces and excellent chip control
- Specifically designed for high-performance turning of aluminium. Also suitable for machining nylon, plastics and timber
- Supplied in a convenient pack of 5 inserts

ORDER CODE:	L0542
MODEL:	TCGT 16T304 HP
Grade:	KC5410
Application:	Aluminium
Pieces in Set (Qty):	5
[D] Insert IC Size (Inscribed Circle) (mm):	9.53
[D1] Insert Hole Size (mm):	4.4
[L10] Insert Cutting Edge Length (mm):	16.5
[S] Insert Thickness (mm):	3.97
[R?] Corner Radius (mm):	0.4
Relief Angle (Deg):	~
d (mm):	~
Insert shape (Style):	Triangle



Product Brochure For L0542



Specific Features



Tip

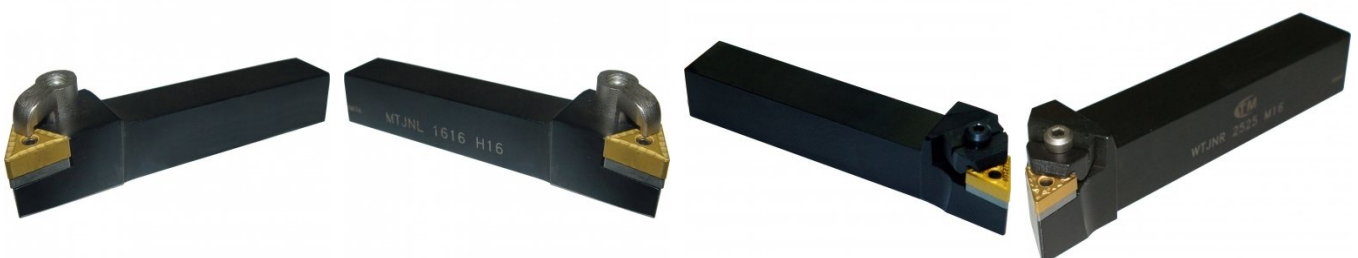
Recommended Accessories

L044
Right Hand Turning Tool Holder

L045
Left Hand Turning Tool Holder

L047
Left Hand Turning Tool Holder

L048
Right Hand Turning Tool Holder



Product Brochure For L0542

L0235
Right Hand Boring Bar



L024
Right Hand Boring Bar



L527
Seat to Suit Turning Tool
Holders



L5315
Seat Pin to Suit Turning Tool
Holders



L535
Clamp to Suit Turning Tool
Holders



L5365
Clamp Screw to Suit Boring Bar

