

Product Brochure For L0519

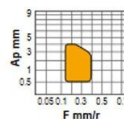
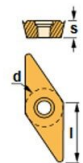
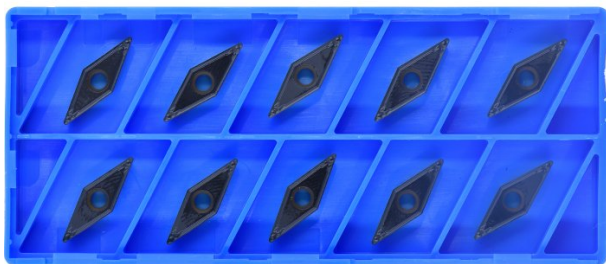
## 35° Rhombic Positive Turning Insert - VCMT110304HQ

Grade CA125P - General Purpose Steel  
10 Inserts Per Pack

**Ex GST**  
**\$184.00**

**Inc GST**  
**\$211.60**

ORDER CODE:	L0519
MODEL:	VCMT110304HQ
Grade:	CA125P
Application:	General Purpose Steel
Pieces in Set (Qty):	10
[D] Insert IC Size (Inscribed Circle) (mm):	6.35
[D1] Insert Hole Size (mm):	2.75
[L10] Insert Cutting Edge Length (mm):	~
[S] Insert Thickness (mm):	3.18
[R?] Corner Radius (mm):	0.4
Relief Angle (Deg):	7°
d (mm):	~
Insert shape (Style):	~



l  
**11.0 mm**

d  
**6.35 mm**

s  
**3.18 mm**

r  
**0.4 mm**

**KYOCERA**  
JAPANESE CARBIDE



### Description

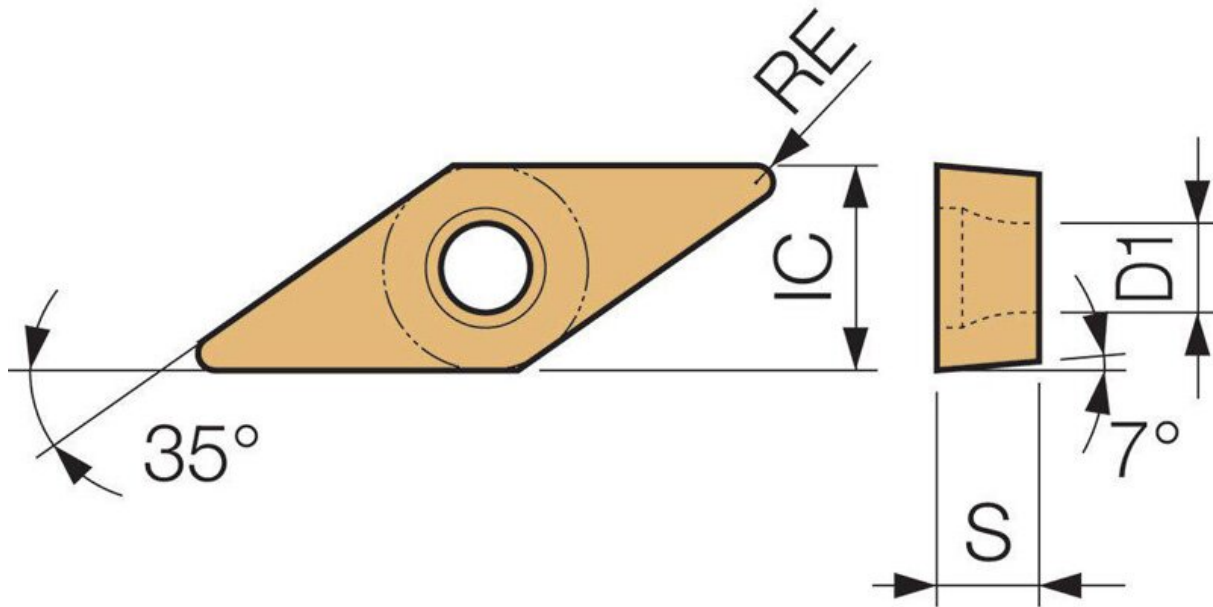
CA125P Grade CVD Coated Carbide for Steel  
Suitable for continuous to heavy interrupted machining, these inserts are designed for general-purpose applications.

HQ Chipbreaker  
General purpose chipbreaker for medium machining.

### Features

- Japanese Made
- CVD Coated Carbide with Thin Ultra-fine TiCN Coating
- 10 Inserts Per Pack

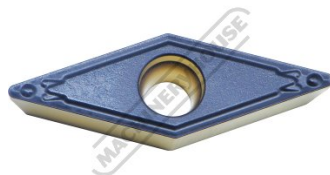
Product Brochure For L0519



**Specific Features**



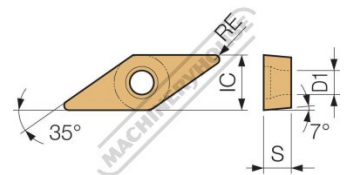
Side View



Top View



Bottom View



Diagram

## Product Brochure For L0519

---

### Recommended Accessories

#### L4058

93° Rhombic / Positive - Right  
Hand Turning Tool Holder

#### L4060

93° Rhombic / Positive - Right  
Hand Turning Tool Holder

