

Product Brochure For L0515

KYOCERA Carbide Inserts - Turning - SCMT09T304HQ

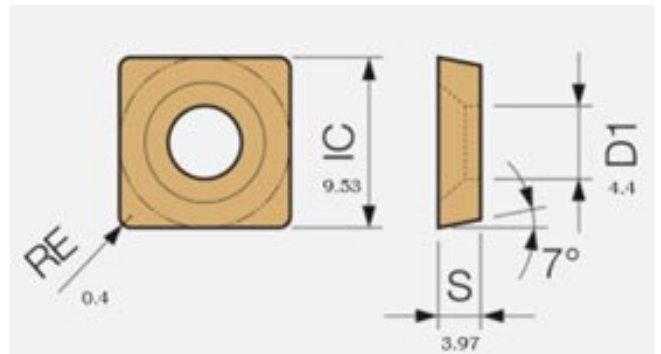
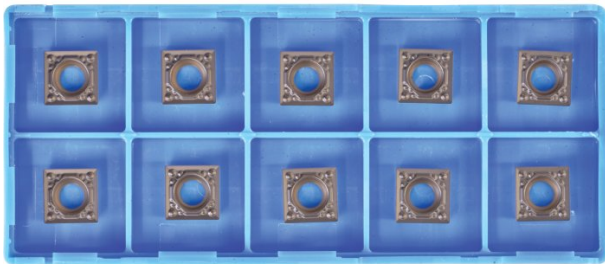
Grade CA125P - Finishing to Medium

10 Inserts Per Pack

Ex GST
\$170.00

Inc GST
\$195.50

ORDER CODE:	L0515
MODEL:	SCMT09T304HQ
Grade:	CA125P
Application:	Finishing to Medium
Pieces in Set (Qty):	10
[D] Insert IC Size (Inscribed Circle) (mm):	9.525
[D1] Insert Hole Size (mm):	4.4
[L10] Insert Cutting Edge Length (mm):	~
[S] Insert Thickness (mm):	3.97
[R?] Corner Radius (mm):	0.4
Relief Angle (Deg):	7°
d (mm):	~
Insert shape (Style):	~



KYOCERA
JAPANESE CARBIDE



Description

CA125P Grade CVD Coated Carbide for Steel
Suitable for continuous to heavy interrupted machining, these inserts are designed for general-purpose applications.

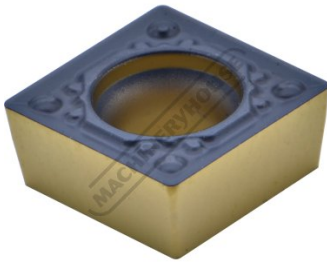
HQ Chipbreaker
General purpose chipbreaker for medium machining.

Features

- Japanese Made
- CVD Coated Carbide with Thin Ultra-fine TiCN Coating
- 10 Inserts Per Pack

Product Brochure For L0515

Specific Features



Tip



Tip Top View

Recommended Accessories

L4050

45° Square / Positive - Right
Hand Turning Tool Holder

L4052

45° Square / Positive - Right
Hand Turning Tool Holder

