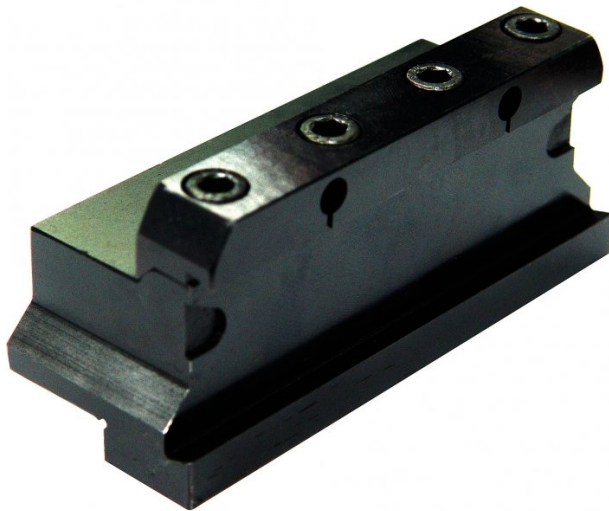


Product Brochure For L029B

Parting Block - Suits 32mm Blade

20mm Tool Height

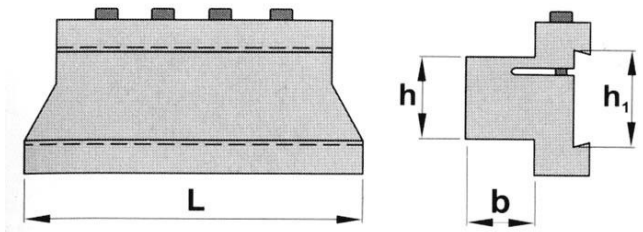


On Sale

Ex GST  
**\$110.00**  
**\$87.83**

Inc GST  
**\$126.50**  
**\$101.00**

ORDER CODE:	L029B
Blade Size (h1) (mm):	32 x 3
h (mm):	20
b (mm):	20
L (mm):	87
Nett Weight (kg):	0.8



Description

NOTE: Blades and Inserts not included:

Optional Accessories

- Blade - 32 x 3mm (L4693) & Inserts (L0513)

TECHNICAL INFORMATION

SETTING THE SPINDLE SPEED

To calculate the correct speed the following formula can be used.

$$\text{RPM} = \frac{1000 \times \text{Surface speed in Metres per Minute (M/min)}}{3.14 \times \text{Work Piece Diameter (mm)}}$$

Example 1.

20mm Mild Steel bar to be parted off.

$$\text{RPM} = \frac{1000 \times 80}{3.14 \times 20\text{mm}} = \frac{80000}{62.8} = 1273\text{rpm}$$

Example 2.

20mm Aluminium bar to be parted off.

$$\text{RPM} = \frac{1000 \times 100}{3.14 \times 20\text{mm}} = \frac{100000}{62.8} = 1592\text{rpm}$$

- Set the spindle speed to the closest RPM speed calculated
- If in doubt then set a speed slower than the calculated speed

SETTING THE TOOL ON CENTRE

For the tool to cut correctly it needs to be set on centre. This can be best achieved by placing a centre in the tailstock and adjusting the tool height to line up with centre point.

Correct Centre Height



Approximate surface speeds for carbide tools

Material	Parting Off
Mild Steel	80 M/min
Cast Iron	70 M/min
Aluminium	100 M/min
Stainless Steel	60 M/min

Product Brochure For L029B

**Specific Features**



Shown Setup with Optional Blade and Tip

**Recommended Accessories**

L4693  
Parting Blade



L0513  
KENNAMETAL Carbide Inserts - Parting



L464  
Professional Lathe Parting Tool Kit - Insert Type



L465  
Professional Lathe Parting Tool Kit - Insert Type



L466  
Professional Lathe Parting Tool Kit - Insert Type



L467  
Professional Lathe Parting Tool Kit - Insert Type



L072  
HSS Turning Tool Set - 4 piece



L0085  
Carbide Turning Tool Set - 11 piece



Product Brochure For L029B

L0055

Lathe Turning Tool Kit - 5 piece  
Insert Type



L0099

Lathe Turning Tool Kit - 7 piece  
Insert Type



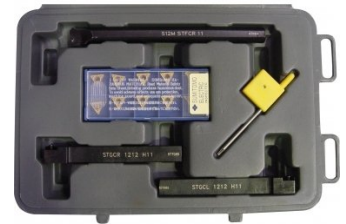
L0077

Lathe Turning Tool Kit - 7 piece  
Insert Type



L450

Lathe Turning Tool Kit - 3 piece  
Insert Type



L451

Lathe Turning Tool Kit - 3 piece  
Insert Type



L452

Lathe Turning Tool Kit - 3 piece  
Insert Type



L453

Lathe Turning Tool Kit - 3 piece  
Insert Type



L456

Lathe Threading Tool Kit - Insert  
Type



L457

Lathe Threading Tool Kit - Insert  
Type



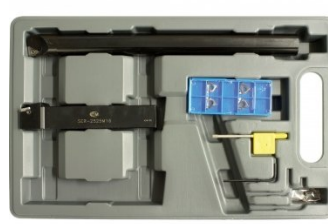
L458

Lathe Threading Tool Kit - Insert  
Type



L459

Lathe Threading Tool Kit - Insert  
Type



L006A

Boring Bar Set - HSS



Product Brochure For L029B

---

L431

Boring Bar Set - Carbide Insert

L430

Boring Bar Set - Carbide Insert

