

Product Brochure For K140

SJ-24DK - Bead Roller - Motorised Variable Speed

1.2mm Mild Steel Thickness Capacity & 460mm Throat Depth

Includes 7 Sets Of Rolls, Now Includes Shearing Rolls



METALMASTER



On Sale - Package Deal

Ex GST	Inc GST
\$840.00	\$966.00
\$760.00	\$874.00

Package Contents - SAVE \$223.10 (Inc)

1 x S641 - SJ-24D Bead Roller	\$464.60
1 x S641M - SJ-24MK Bead Roller Motor Kit - 200W Variable Speed	\$682.50
Normal Price (Inc):	\$1,097.10

ORDER CODE:	K140
MODEL:	SJ-24DK
Machine (Type):	Bead Roller - Motrised
Mild Steel - Thickness Capacity (mm / Gauge):	1.2 / 18
Aluminium - Thickness Capacity (mm / Gauge):	1.6 / 16
Throat Depth Maximum (mm):	460
Throat Height (mm):	20
Roll Diameter (mm):	52
Output Drive Speed (rpm):	0 - 20
Motor Power (kW / hp):	0.2 / 0.27
Voltage / Amperage (V / amp):	240 / 10
Nett Weight (kg):	61

Description

The Metalmaster SJ-24DK Motorised Variable Speed Bead Roller Package Deal is perfect for the automotive enthusiast starting out in repairing or reproducing car panels, or for anyone wanting to strengthen automotive body panels, roofs, seals or even guards. Constructed from heavy-duty plate steel.

The SJ-24DK Bead Roller kit can handle up to 1.2mm mild steel sheet metal at a generous 460mm throat depth and the 0 -20rpm output variable speed roller is controlled via the foot control pedal and the speed can be changed simply by the pressure you apply with your foot.

The 25mm drive-shafts are supported in quality bronze bearing bushes that incorporates greasing nipples to ensure smooth rolling operation for many years of use.

The SJ-24DK also includes 7 sets of the most commonly used rollers required by any metal forming automotive enthusiast or professional - 1/4", 3/8", 1/2" bead rolls, 1/2", 1/16", 1/8" flange rolls and a shearing roll set.

Features

- SJ-24D - Bead Roller:
 - 1.2mm mild steel capacity for bead & flange rolls
 - 1.0mm mild steel capacity for shearing rolls
 - Heavy duty steel construction
 - Strengthened frame with 16mm steel
 - Strengthened stand with 88mm steel pipe
 - Ø25mm drive shafts
 - Ø22mm spigot for mounting rollers
 - Ø54mm bead rollers
 - Gear driven system
- SJ-24MK - Bead Roller Motor Kit:
 - 200W / 240V variable speed drive motor
 - Forward & reverse motor switch
 - Includes mounting bracket & foot pedal with emergency stop
- Please Note: Some assembly is required to fit motor to Bead Roller

Includes

7 Sets of rolls with Ø22mm bore:

Product Brochure For K140

- 1/4" (6.35mm) single bead roll set
- 3/8" (9.5mm) single bead roll set
- 1/2" (12.7mm) single bead roll set
- 1/16" (1.6mm) flange roll set
- 1/8" (3.2mm) flange roll set
- 1/4" (6.35mm) flange roll set
- Shearing roll set

Specific Features



Side View



Motor Kit Assembly



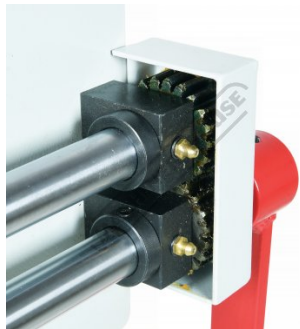
Variable Speed Drive Motor



Drive Shaft Coupler Connector



Emergency Stop-Forward-Reverse Switch



Gear Driven Rollers



Top Roll Height Adjustment Handle



16mm Plate Steel



Shown With Shearing Dies



Shown With 1.2.12 Beading Dies



22mm Spigot for Mounting Rollers



Rolls Stored on Stand

Product Brochure For K140



Shearing Dies



1.4 6.35mm Stepped Dies



1.8 3mm Stepped Dies



1.16 1.6mm Stepped Dies



1.2 12.7mm Beading Dies



3.8 9.5mm Beading Dies



1.4 6.35mm Beading Dies



Side Profile View Of Die Sets



Die Sets Top View

Die Sets Top View 2



Includes 7 Sets of Dies

Product Brochure For K140

Recommended Accessories

S641F

Adjustable Material Guide Fence



S641M

Bead Roller Motor Kit - 200W
Variable Speed



S6411

Forming Bead Roller Kit



S6412

Round Over Bead Roller Sets