

Product Brochure For K065

## 6 Drawer - Industrial Mobile Tooling Cabinet with Backing Panel Package Deal - TCW-900NP

565 x 580 x 1400mm  
100kg per Drawer



### Package Deal

Ex GST	Inc GST
<b>\$964.00</b>	<b>\$1,108.60</b>

### Package Contents - SAVE \$75.90 (Inc)

1 x T764 - 6 Drawer - Industrial Tooling Cabinet TC-750	<b>\$913.10</b>
1 x T776 - Wheel Kit - Ø125mm WK-4	<b>\$140.30</b>
1 x T781 - Steel Frame Backing Panel BPF-565	<b>\$98.90</b>
1 x T778 - Handle HDL-565	<b>\$32.20</b>

<b>Normal Price (Inc):</b>	<b>\$1,184.50</b>
----------------------------	-------------------

ORDER CODE:	K065
MODEL:	TCW-900NP
Number of Drawers (No.):	6
Drawer Load Capacity (kg):	100
Maximum Total Load Capacity (kg):	390
Includes Backing Panel:	Yes
Dimensions (W x D x H) (mm):	565 x 580 x 1400
Nett Weight (kg):	113



### Features

- Steel top frame & backing panel - BPF-565
- 2 fixed & 2 swivel Ø125mm caster wheels
- Heavy duty tooling cabinets, ideal for industrial applications and serious workshops
- The sliding drawers are a welded strengthened single rail design coupled with high quality mechanical bearings for long lasting smooth operation
- Each drawer is rated at 100kg load capacity with 97% drawer access and a total of 390kg maximum load capacity
- Single Key lock design for safe storage. Each drawer has a mechanical safety lock which allows one drawer to be opened at a time, preventing the cabinet to tip over
- All top drawers include a series of different size plastic boxes for those small items, all other drawers come with adjustable steel dividers
- Includes steel frame backing panel with rubber protective base cover is great to rest tooling and precious parts on top of the cabinet

### Includes

- Steel top frame & backing panel - BPF-565
- Top Drawer - 75mm high with moveable plastic division boxes
- Drawer 2 - 75mm high with moveable steel dividers 3x3 layout
- Drawer 3 & 4 - 100mm high with moveable steel dividers 3x3 layout
- Drawer 5 & 6 - 150mm high with moveable steel dividers 3x3 layout

Product Brochure For K065

**Specific Features**



Shown with Optional Tools



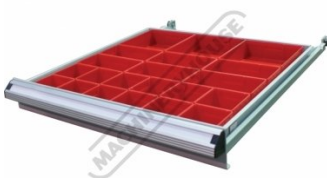
Shown with Optional Tools



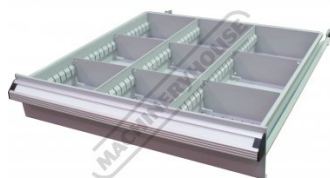
Backing Top Panel



Tooling Cabinet



Top Drawer with Plastic Buckets



Drawers with Steel Dividers



Heavy Duty Drawers



Drawer Ball Bearing Arms



Drawer Locking Mechanism



Drawer Lock Bracket



Drawer in Lock Position



Drawer in Unlock Position



Heavy Duty Drawer Slides



Drawers with Safety Lock



2 x Fixed Wheels



2 x Brake Swivel Wheels

Product Brochure For K065



Key Lock



Heavy Duty Push Handle



Drawers with Steel Dividers



Heavy Duty Drawers with 100kg Load Capacity



Top Drawer with Plastic Buckets



Show with Top Drawer Open

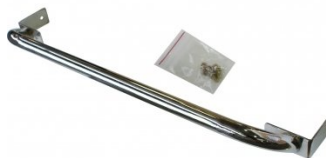
**Recommended Accessories**

T781  
Steel Frame Backing Panel

T776  
Wheel Kit - Ø125mm

T778  
Handle

A427  
Plastic Bucket



Product Brochure For K065

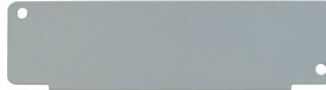
A428  
Plastic Bucket



A429  
Plastic Bucket



T784  
Steel Divider



T784B  
Slotted Rail



T786  
Steel Divider



T786B  
Slotted Rail



T787  
Steel Divider



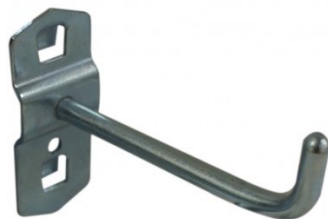
T787B  
Slotted Rail



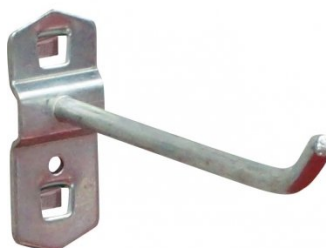
A439  
Hook - Single Prong



A440  
Hook - Single Prong



A4401  
Hook - Single Prong



A441  
Hook - Double Prong



Product Brochure For K065

A442  
Hook - Double Prong



A4492  
Hook - U Shape Holder



A449  
Hook - U Shape Holder



A4496  
Round Tool Holder - Loop



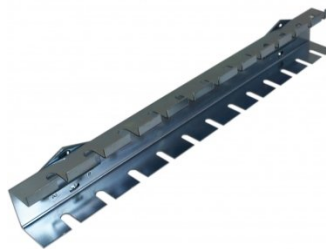
A444  
Plier Holder - Triple Prong



A446  
Holder - Spanner



A448  
Holder - Screwdriver



T703  
Magnetic Spray Can & Screwdriver Holder



H820  
Metric Hex Key Set with T-Bar Handle



H821  
Imperial Hex Key Set with T-Bar Handle



H822  
Torx® Key Set with T-Bar Handle



D1272  
Metric 135° Precision HSS Drill Set - 25 Piece



Product Brochure For K065

**D1282**  
Imperial 135° Precision HSS Drill Set - 29 Piece



**D1285**  
Metric 135° Precision HSS Drill Set - 51 Piece



**D1071**  
HSS Sheet Metal Step Drill Set - 3 Piece



**D1051**  
HSS Countersink Set (90° Cross Hole Type) - 4 Piece



**D1061**  
HSS Countersink Set (90° 3 Flute Type) - 6 Piece



**D508**  
HSS Industrial Centre Drill Set - 5Pcs



**D070**  
Drill Sharpener



**H880**  
Dead Blow, Nylon Face Hammer



**H870**  
Soft Face Hammer



**H875**  
Soft Face Hammer - 5 piece



**H885**  
Auto Panel Restoration Kit - DIY



**H886**  
Auto Panel Restoration Kit - Professional

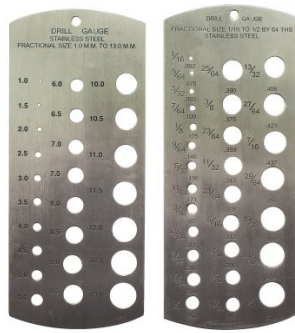


Product Brochure For K065

**H887**  
Auto Panel Restoration Kit - Master



**M988**  
Metric & Imperial Drill Gauge



**Q616**  
Feeler Gauge Set



**T012**  
Metric Alloy Steel Tap & Die Set - 32 Piece



**T013**  
Metric HSS Tap & Die Set - 32 Piece



**T014**  
Metric Alloy Steel Tap & Die Set - 45 Piece



**T015**  
Imperial Alloy Steel Tap & Die Set - 45 Piece



**T016**  
Metric HSS Tap & Die Set - 45 Piece



**T870**  
Screw Extractor Set - 10 piece



**T100**  
Metric Thread Repair Kit - 130 Piece



**D108**  
Metric Carbide Tipped Hole Saw Set



**D102**  
Metric HSS Hole Saw Set



Product Brochure For K065

---

**F100**  
Engineers Files, 5 Piece Set -  
Second Cut



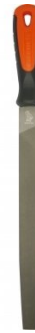
**F120**  
Engineers File, Flat - Coarse  
Cut



**F121**  
Engineers File, Flat - Second  
Cut



**F122**  
Engineers File, Flat - Smooth  
Cut



**F124**  
Engineers File, Half Round -  
Coarse Cut



**F125**  
Engineers File, Half Round -  
Second Cut



**F126**  
Engineers File, Half Round -  
Smooth Cut



**F127**  
Engineers File, Round - Coarse  
Cut



**F128**  
Engineers File, Round - Second  
Cut



**F129**  
Engineers File, Round - Smooth  
Cut



**F160**  
Slapping File - Second Cut



**F150**  
Flexible Body File Holder



Product Brochure For K065

**F155**  
Flexible Body File



**F156**  
Flexible Body File



**P112**  
Hole Punch Set



**S203**  
180° Straight Edge/Seaming Plier



**S205**  
90° Edge/Seaming Plier



**S200**  
Joggler & Punch Plier



**P368**  
Automatic Centre Punch



**P367**  
Centre Punch Set - 3 Piece



**P365**  
Pin Punch Set - 6 Piece



**P363**  
Cold Chisel Set - 3 Piece



**P364**  
Punch & Cold Chisel Set - 14 Piece



**N001**  
Nut & Blind Riveter Set - 130 Piece



Product Brochure For K065

**P350**  
Letter Punches



**P351**  
Number Punches



**P354**  
Letter Punches



**P355**  
Number Punches



**W103**  
Engineers Chalk Marker- 50  
Splits



**D063**  
Sheet Metal Deburring Tool



**D060**  
Deburring Tool - Telescopic  
Shaft



**D065**  
Universal Deburring Tool Set -  
23 Piece



**D068**  
Pipe/Tube Deburring Tool -  
Internal / External



**B900**  
Carbide Burr Double Cut Set -  
Short Series



**B905**  
Carbide Burr Double Cut Set -  
Long Series



**M0010**  
Pick Up Tool with Magnetic  
Head & 1 x LED Light



Product Brochure For K065

**M0009**  
Magnetic Pick Up Tool & Inspection Mirror Set



**L300**  
Magnetic Swarf Remover



**P020**  
Hydraulic Chassis Punch Set



**W112**  
Micro Welding Steel Clamp Set



**W113**  
Butt Welding Aluminium & Steel Clamp Set



**S077**  
Drilling, Tapping & Cutting Tool Lubricant Spray - 400g



**O043**  
Rust & Corrosion Preventive



**O042**  
General Purpose Lubricant & Corrosion Inhibitor



**O044**  
Rust & Corrosion Preventive



**P030**  
Bush Driver Set - 17 piece



**P031**  
Bearing Race & Seal Driver Set - 10 piece



**P005**  
Ratcheting Gear Puller Set



Product Brochure For K065

---

P013  
Puller Set with Slide Hammer



P011  
Hydraulic Gear Puller Kit



A037  
Air Tool Oil

