

Product Brochure For K0411

## Industrial Work Bench Package Deal - IWB-12P0

1200 x 750 x 900mm  
1000kg Table Top Load Capacity



### Package Deal

<b>Ex GST</b>	<b>Inc GST</b>
<b>\$440.00</b>	<b>\$506.00</b>

### Package Contents - SAVE \$27.60 (Inc)

1 x A415 - Industrial Work Bench IWB-12	<b>\$407.10</b>
1 x A359 - Pneumatic Stool GSP-795	<b>\$126.50</b>
<b>Normal Price (Inc):</b>	<b>\$533.60</b>

ORDER CODE:	K0411
MODEL:	IWB-12PO
Bench Material (Type):	Steel with Laminated Top & Package Deal
Table Top Load Capacity (kg):	1000
Number of Drawers (No.):	Optional
Table Dimensions (L x W x H) (mm):	1200 x 750 x 900
Nett Weight (kg):	60



### Description

Heavy Duty steel construction. Great heavy duty work bench for the workshop or garage.

The IWB-12 Industrial-duty work bench has a huge load capacity of 1000kg (1 Tonne). Constructed from heavy duty powder coated steel the multi-functional commercial frame provides maximum rigidity for the most demanding industrial applications. Finished with a rounded PVC edge the 41mm medium density laminated bench top will withstand heavy loads.

An optional louvred backing panel which incorporates a fixed top and bottom shelf is a great addition. A complete range of tool hooks, hangers and storage buckets are also available making storing and locating your tools much easier.

To complete the package a 6 drawer tooling cabinet designed to fit underneath the bench is another great option. Featuring a range of plastic boxes in the top drawer it would be ideal for the storage of small parts such as screws etc. The lower drawers incorporate movable steel dividers which allow you to configure the space to suit your application; this great work bench solution shown can be individually purchased to suit your requirements.

### Features

- IWB-12 Work Bench:
  - Heavy duty steel fabricated frame with powder coated finish for maximum rigidity
  - Top Surface is 2mm high density laminate over 41mm thick medium density chipboard with bull nosed hard PVC edge
  - Easy to use screw out adjustable feet
  - High quality laminated medium density chipboard with a 1000kg load capacity, rounded PVC edge and also resistant to alkali and oil
- Please Note: Table top load capacity is calculated on even weight distribution over entire table top area
- GSP-795 - Pneumatic Stool:
  - This pneumatic garage stool incorporates a very comfortable padded seat that can handle a capacity of 135Kg and is perfect for mechanics, panel beaters, handyman, workshops & the Home Garage etc.
  - Ø360mm round padded seat
  - 675 ~ 795mm seat height
  - Chrome plated heavy duty steel frame with footrest
  - High density foam padded seat Ø360mm round x 60mm thick
  - Pneumatic lever for adjustable height 675 - 795mm
  - Seat allows 360° rotation
  - Ø420mm round footrest

## Product Brochure For K0411

- Non slip rubber feet

### Specific Features



Workbench



Adjustable Height 675 795mm



Rounded-bull nosed hard PVC edge



Adjustable Feet



Steel leg bracing



Chrome Plated Heavy Duty Steel Frame



High Density Foam Padded Seat



420mm Round Footrest



Pneumatic Height Adjustment Lever

Product Brochure For K041

**Recommended Accessories**

A416

Industrial Backing Panel - Bench Mount



A422

2 Drawer - Industrial Under Bench Tooling Cabinet



K041

Industrial Work Bench Package Deal



A4225

2 Drawer - Industrial Under Bench Tooling Cabinet



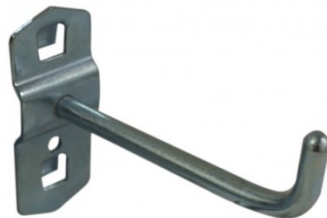
T764

6 Drawer - Industrial Tooling Cabinet



A440

Hook - Single Prong



A442

Hook - Double Prong



A444

Plier Holder - Triple Prong

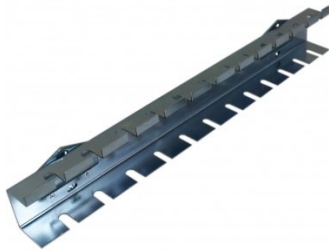


Product Brochure For K0411

A446  
Holder - Spanner



A448  
Holder - Screwdriver



A430  
Plastic Bucket



A432  
Plastic Bucket



A434  
Plastic Bucket



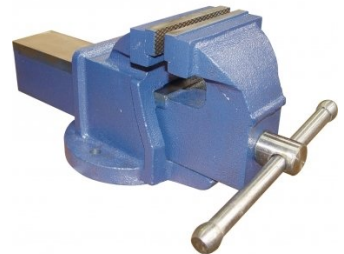
A436  
Plastic Bucket



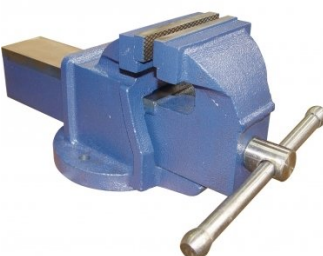
A359  
Pneumatic Stool



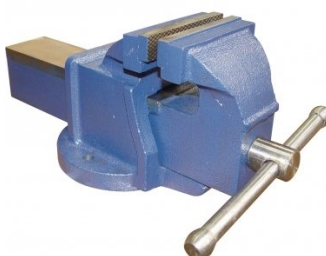
V088  
100mm Cast Iron Bench Vice



V089  
127mm Cast Iron Bench Vice



V090  
152mm Cast Iron Bench Vice



V067  
152mm Steel Offset Fabricated Bench Vice

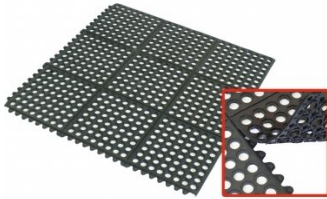


M800  
Rubber Mat - Anti-Fatigue Bench Vice



Product Brochure For K0411

**M805**  
Rubber Mat - Anti-Fatigue



**G160**  
Industrial Bench Grinder



**G160A**  
Industrial Bench Grinder



**G161**  
Industrial Bench Grinder



**D590**  
Medium-Duty Bench Drill - Belt Drive



**H820**  
Metric Hex Key Set with T-Bar Handle



**H821**  
Imperial Hex Key Set with T-Bar Handle



**H822**  
Torx® Key Set with T-Bar Handle



**D1272**  
Metric 135° Precision HSS Drill Set - 25 Piece



**D1282**  
Imperial 135° Precision HSS Drill Set - 29 Piece



**D1285**  
Metric 135° Precision HSS Drill Set - 51 Piece



**D1071**  
HSS Sheet Metal Step Drill Set - 3 Piece



Product Brochure For K0411

**D1051**  
HSS Countersink Set (90° Cross Hole Type) - 4 Piece



**D1061**  
HSS Countersink Set (90° 3 Flute Type) - 6 Piece



**D508**  
HSS Industrial Centre Drill Set – 5Pcs



**D070**  
Drill Sharpener



**H880**  
Dead Blow, Nylon Face Hammer



**H870**  
Soft Face Hammer



**H875**  
Soft Face Hammer - 5 piece



**H885**  
Auto Panel Restoration Kit - DIY



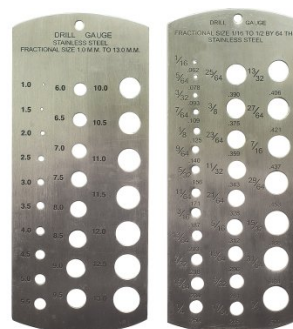
**H886**  
Auto Panel Restoration Kit - Professional



**H887**  
Auto Panel Restoration Kit - Master



**M988**  
Metric & Imperial Drill Gauge



**Q616**  
Feeler Gauge Set



Product Brochure For K0411

T012

Metric Alloy Steel Tap & Die Set - 32 Piece



T013

Metric HSS Tap & Die Set - 32 Piece



T014

Metric Alloy Steel Tap & Die Set - 45 Piece



T015

Imperial Alloy Steel Tap & Die Set - 45 Piece



T016

Metric HSS Tap & Die Set - 45 Piece



T870

Screw Extractor Set - 10 piece



T100

Metric Thread Repair Kit - 130 Piece



D108

Metric Carbide Tipped Hole Saw Set



D102

Metric HSS Hole Saw Set



F100

Engineers Files, 5 Piece Set - Second Cut



F120

Engineers File, Flat - Coarse Cut



F121

Engineers File, Flat - Second Cut



Product Brochure For K0411

**F122**  
Engineers File, Flat - Smooth Cut



**F124**  
Engineers File, Half Round - Coarse Cut



**F125**  
Engineers File, Half Round - Second Cut



**F126**  
Engineers File, Half Round - Smooth Cut



**F127**  
Engineers File, Round - Coarse Cut



**F128**  
Engineers File, Round - Second Cut



**F129**  
Engineers File, Round - Smooth Cut



**F160**  
Slapping File - Second Cut



**F150**  
Flexible Body File Holder



**F155**  
Flexible Body File



**F156**  
Flexible Body File



**P112**  
Hole Punch Set



Product Brochure For K0411

**S203**  
180° Straight Edge/Seaming Plier



**S205**  
90° Edge/Seaming Plier



**S200**  
Joggler & Punch Plier



**P368**  
Automatic Centre Punch



**P367**  
Centre Punch Set - 3 Piece



**P365**  
Pin Punch Set - 6 Piece



**P363**  
Cold Chisel Set - 3 Piece



**P364**  
Punch & Cold Chisel Set - 14 Piece



**N001**  
Nut & Blind Riveter Set - 130 Piece



**P350**  
Letter Punches



**P351**  
Number Punches



**P354**  
Letter Punches



Product Brochure For K0411

**P355**  
Number Punches



**W103**  
Engineers Chalk Marker- 50 Splits



**D063**  
Sheet Metal Deburring Tool



**D060**  
Deburring Tool - Telescopic Shaft



**D065**  
Universal Deburring Tool Set - 23 Piece



**D068**  
Pipe/Tube Deburring Tool - Internal / External



**B900**  
Carbide Burr Double Cut Set - Short Series



**B905**  
Carbide Burr Double Cut Set - Long Series



**M0010**  
Pick Up Tool with Magnetic Head & 1 x LED Light



**M0009**  
Magnetic Pick Up Tool & Inspection Mirror Set



**L300**  
Magnetic Swarf Remover



**P020**  
Hydraulic Chassis Punch Set



Product Brochure For K0411

**W112**  
Micro Welding Steel Clamp Set



**W113**  
Butt Welding Aluminium & Steel Clamp Set



**S077**  
Drilling, Tapping & Cutting Tool Lubricant Spray - 400g



**O043**  
Rust & Corrosion Preventive



**O042**  
General Purpose Lubricant & Corrosion Inhibitor



**O044**  
Rust & Corrosion Preventive



**P030**  
Bush Driver Set - 17 piece



**P031**  
Bearing Race & Seal Driver Set - 10 piece



**P005**  
Ratcheting Gear Puller Set



**P013**  
Puller Set with Slide Hammer



**P011**  
Hydraulic Gear Puller Kit



**A037**  
Air Tool Oil

