

## Product Brochure For K028

# Workshop Turret Milling Machine Package with Digital Readout & Tooling Accessories - HM-50

Table Travel: (X) - 600mm (Y) - 220mm (Z) - 340mm



ORDER CODE:	K028
MODEL:	HM-50 Package
Digital Readout:	3-Axis Digital Readout
Type:	Vertical
Table Size (mm):	1000 x 240
Column Type:	~
Spindle Taper - Vertical:	NT30
Spindle Taper - Horizontal:	~
Longitudinal Travel (X-Axis) (mm):	600*
Cross Travel (Y-Axis) (mm):	220*
Vertical Travel (Z-Axis) (mm):	340
Type of Slides:	Dovetail
Ram Travel (mm):	340
Spindle to Table (mm):	430
Spindle to Base:	~
Spindle Travel / Diameter (mm):	125 / 90
Throat Depth (max.) (mm):	600
Tilting Head (Left ~ Right):	±90°
Tilting Head (Forward ~ Back):	Fixed
Drilling Capacity (mm):	30
End Milling Capacity (mm):	25
Face Milling Capacity (mm):	80
Power Feed - Quill (mm/rev):	Manual
Power Feed - Longitudinal (X-Axis) (mm/min):	20 - 2000
Power Feed - Cross (Y-Axis) (mm/min):	Optional
Power Feed - Vertical (Z-Axis) (mm/min):	Optional
Table T-Slot Size (inch / mm):	14
Work Table Load Capacity (kg):	175
Spindle Speeds Vertical (No./ rpm):	9 (220 - 2400)
Spindle Speeds Horizontal (No./ rpm):	~
Spindle Speeds - Universal Head:	~
Motor Power - Vertical Spindle (kW / hp):	1.5 / 2
Motor Power - Horizontal Spindle (kW / hp):	~
Motor Power - Universal Head:	~
Voltage / Amperage (V / amp):	240 / 10
Nett Weight (kg):	850

## Description

A well-built entry level turret milling / drilling machine with a powerful continuous-load 1.5kW / 2hp motor, intended for trade use. The work table is precision made with adjustable dovetail guides and is recognised for its 600mm X axis by 200mm Y axis travel. There is a three armed handle on the side for drilling also incorporating a fine feed control hand wheel on the front for milling. The screwed belt guard covers on each side of the head offer secure safety whilst providing easy access to the belts and pulleys for speed changing.

Other features include 3 axis digital readout system, taper roller bearing support for the spindle, easy-to-read drilling depth stop, low voltage work light, 150mm machine vice, 8 piece metric collet chuck set, coolant system, X axis power feed unit, drill chuck, 2 & 3 morse taper adaptors. The combination of generous sized vertical support and rugged cast iron construction throughout reduces vibration and guarantees accurate and chatter-free operation.

## Features

- 3 Axis digital readout system
- Mill head tilts to ±90° left to right
- 340mm horizontally sliding and rotating ram
- NT30 vertical spindle is hardened and ground
- Precision-ground dovetail slide-ways and table

## Product Brochure For K028

- Precision milling table incorporating machined T-slots
- Rear concertina slide-way cover
- Forward and reverse on/off switch
- Fine hand wheel operated quill feed
- Swarf & splash tray
- Spindle lock for quill
- Metric dial graduations @ 0.02mm for X , Y & Z-Axis
- Vertical quill hand-wheel dial graduations @ 0.05mm
- All slides utilise dovetail construction for maximum rigidity
- \* Note: X & Y travels maybe reduced due to digital readout scales and safety stops
- \* Note: Optional Y & Z power feeds require additional parts & fitting (not included)

### Includes

- 3 Axis digital readout system
- X-Axis power feed
- Safety cutter guard
- Swarf tray
- Coolant system
- Halogen lamp
- 150mm machine vice
- Drill chuck & arbor
- 2 & 3MT adaptors
- 8-piece metric collet chuck set (4-16mm)
- 58 piece clamp kit set - (C0965)
- 5 Piece metric slot drill set - (M3351)
- 5 Piece metric end mill set - (M3352)

### Specific Features



Left View



Head Left View



Head Right View



3 Axis Digital Readout System



Quill Feed Handle and Fine Feed Dial



Quill Fine Feed Handle



Quill Handle

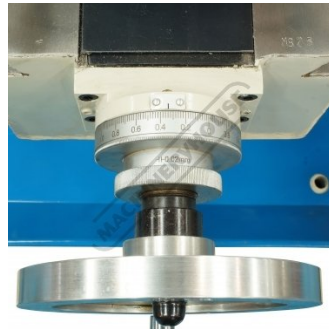


X Axis Power Feed with Rapid

Product Brochure For K028



X Axis Dial



Y Axis Dial



Knee Feed Handle



Knee Feed Dial

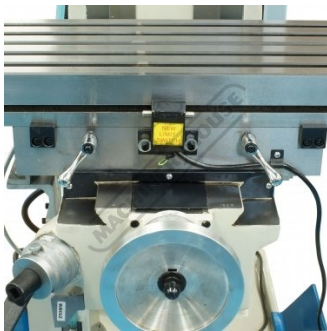


Table Feed Limit Switches

SPINDLE SPEED (R.P.M)			
SPINDLE		MOTOR	
DE	220	DG	760
CE	320	AF	1300
DF	400	BG	1600
BE	500	AG	2400
CF	700		

Spindle Speed Chart



Control Panel



Worklight and Coolant Hose



Coolant System



Concertina Slide Way Cover



Tilting Head Scale



Adjustable Swivel and Sliding Ram



Machine Vice



Accessories Included, 150mm Vice, Metric Collet Chuck Set, Drill Chuck and Arbor, Morse Taper Adaptors

Product Brochure For K028

**Recommended Accessories**

**M229**  
Power Feed Unit



**L300**  
Magnetic Swarf Remover



**M9991**  
Magnetic Floor Sweeper



**V106**  
Vertex K-Type Milling Vice



**C0965**  
Clamp Kit 58 piece - Workshop Series



**M540**  
Face Mill Arbor



**M530**  
Universal Milling Kit - 4 Piece



**M3301**  
Metric HSS Slot Drill & End Mill Set - 10 Piece

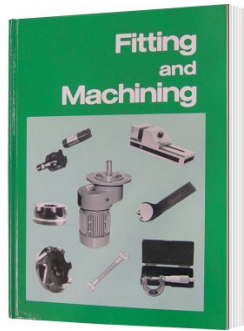


Product Brochure For K028

**M3321**  
Imperial HSS Slot Drill & End Mill Set - 10 Piece



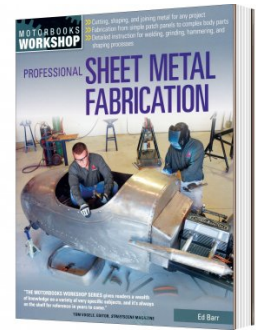
**L341**  
Fitting and Machining Technical Book



**L345**  
Handy Workshop Tips & Techniques - 1st Edition



**L3455**  
Professional Sheet Metal Fabrication Book



**R004**  
Vertex Super Indexing Head



**R006**  
Vertex Rotary Table



**M242**  
Angle Plate - Precision Ground



**M243**  
Angle Plate - Precision Ground



**M182**  
Precision Boring Head Kit



**M183**  
Precision Boring Head Kit



**M184**  
Precision Boring Head



**M193**  
Boring Head Shank



Product Brochure For K028

**M197**  
Boring Head Shank



**M250**  
Parallel Set - 8 Piece



**M252**  
Parallel Set - 18 Piece



**M180**  
Boring Bar Set - 9 piece



**M181**  
Boring Bar Set - 12 piece



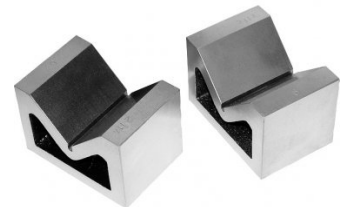
**V010**  
Alloy Steel Vee Block



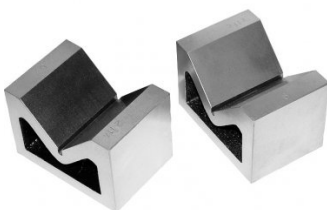
**V003**  
Cast Iron Vee Block



**V004**  
Cast Iron Vee Block



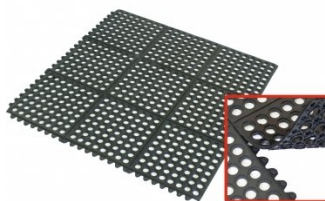
**V006**  
Cast Iron Vee Block



**M800**  
Rubber Mat - Anti-Fatigue



**M805**  
Rubber Mat - Anti-Fatigue



**S090A**  
Soluble Metal Cutting Fluid - 1 Litre



Product Brochure For K028

S090

Soluble Metal Cutting Fluid - 5 Litre



S076

Cutting Tool Lubricant Fluid - 500ml



S077

Drilling, Tapping & Cutting Tool Lubricant Spray - 400g



S074

Cutting Tool Lubricant Paste - 500g



O043

Rust & Corrosion Preventive



O042

General Purpose Lubricant & Corrosion Inhibitor



O044

Rust & Corrosion Preventive

