

Product Brochure For H360

## 29mm 9.5T Grade S - Lifting Bow Shackle - GSSB29

Galvanised Finish With Yellow Pin

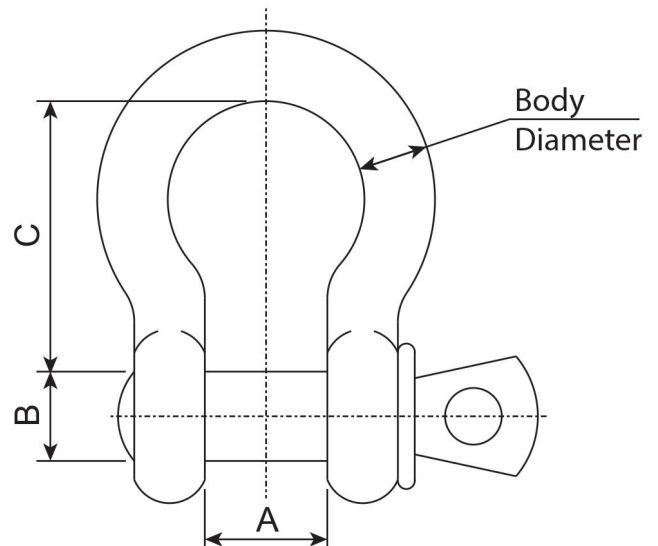
"Grade S" - Compliant & Meets The Requirement of AS2741

Ex GST  
\$50.00

Inc GST  
\$57.50



Order Code:	H360
Model:	GSSB29
W.L.L - Working Load Limit (Tonne):	9.5
Body Diameter (mm):	29
A - Throat Opening (mm):	46
B - Pin Diameter (mm):	32
C - Throat Depth (mm):	92



### Description

- The most common shackles used in lifting applications, with a high strength to size ratio
- Easy and effective way of providing a connection of slings, chains and wire ropes
- Supplied in a galvanised finish with yellow painted pin
- Suitable applications: Marine, agricultural, towing, & general industrial
- Compliant & meets the requirement of AS 2741

### Features

- 9.5 Tonne working load limit
- 29mm Body Diameter
- 92mm Throat depth
- 46mm Throat opening
- 32mm Pin diameter