

Product Brochure For D825

## Boring Sleeve - Straight - CHR 32-2MT

Suits CNC Lathes  
Ø32mm x MT2

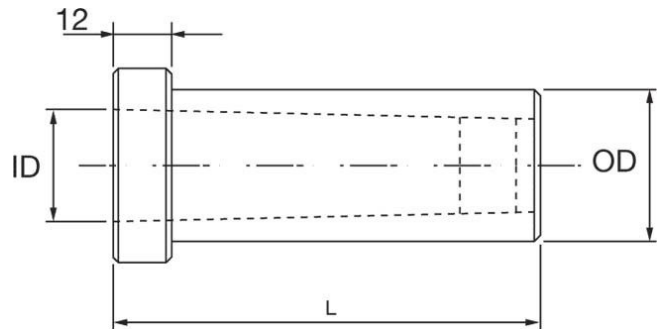
**On Sale**

Ex GST  
~~\$98.00~~  
**\$76.52**

Inc GST  
~~\$112.70~~  
**\$88.00**



ORDER CODE:	D825
MODEL:	CHR 32-2MT
Type:	Plain
OD (mm):	32
ID (mm):	2MT
L (mm):	88
L1 (mm):	~



### Description

Used in the turrets of CNC lathes to hold morse taper drills.  
Universal design allows these sleeves to be fitted to all CNC machines with turrets

### Features

- Precision ground inside and out
- Clamping Flat for clamping the sleeve into the turret
- Drive slot for the tang of the taper shank drill

## Product Brochure For D825

---

### Recommended Accessories

D420

Drill Sleeve - Morse Taper

